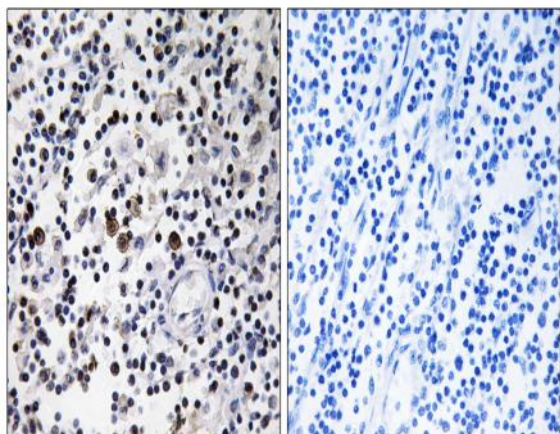


DCL-1 Polyclonal Antibody

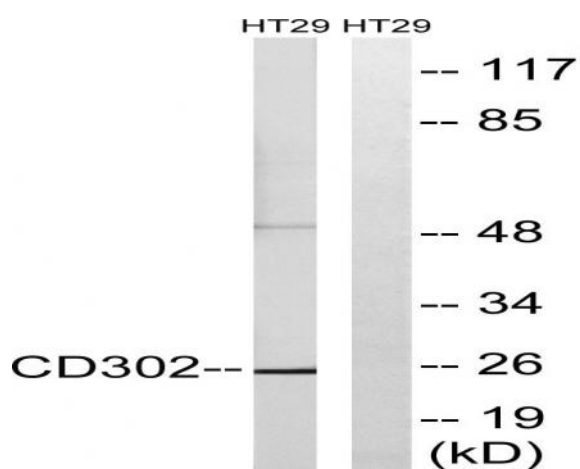
Catalog No :	YT1301
Reactivity :	Human;Mouse;Rat
Applications :	WB;IHC;IF;ELISA
Target :	DCL-1
Gene Name :	CD302
Protein Name :	CD302 antigen
Human Gene Id :	9936
Human Swiss Prot No :	Q8IX05
Mouse Gene Id :	66205
Mouse Swiss Prot No :	Q9DCG2
Rat Gene Id :	295629
Rat Swiss Prot No :	Q5FVR3
Immunogen :	The antiserum was produced against synthesized peptide derived from human CD302. AA range:51-100
Specificity :	DCL-1 Polyclonal Antibody detects endogenous levels of DCL-1 protein.
Formulation :	Liquid in PBS containing 50% glycerol, 0.5% BSA and 0.02% sodium azide.
Source :	Polyclonal, Rabbit,IgG
Dilution :	WB 1:500 - 1:2000. IHC 1:100 - 1:300. ELISA: 1:40000.. IF 1:50-200
Purification :	The antibody was affinity-purified from rabbit antiserum by affinity-chromatography using epitope-specific immunogen.

Concentration :	1 mg/ml
Storage Stability :	-15°C to -25°C/1 year(Do not lower than -25°C)
Observed Band :	26kD
Background :	CD302 is a C-type lectin receptor involved in cell adhesion and migration, as well as endocytosis and phagocytosis (Kato et al., 2007 [PubMed 17947679]).[supplied by OMIM, Aug 2008],
Function :	function:Acts as an endocytic receptor to direct captured antigens from the extracellular space to a specialized antigen-processing compartment (By similarity). Causes reduced proliferation of B-lymphocytes.,miscellaneous:Isoform 2 and isoform 3 are produced in HRS cells by a transcriptional control mechanism which cotranscribe an mRNA containing LY75 and CD302 prior to generating the intergenically spliced mRNA to produce LY75/CD302 fusion proteins.,online information:DEC-205,PTM:N-glycosylated.,similarity:Contains 1 C-type lectin domain.,similarity:Contains 1 fibronectin type-II domain.,similarity:Contains 1 ricin B-type lectin domain.,similarity:Contains 10 C-type lectin domains.,tissue specificity:Expressed in myeloid and B lymphoid cell lines. Isoform 2 and isoform 3 are expressed in malignant Hodgkin's lymphoma cells called Hodgkin's and Reed-Sternberg (HRS) cells.,tissue specifici
Subcellular Location :	Membrane ; Single-pass type I membrane protein . Cell projection, filopodium . Cytoplasm, cell cortex . Cell projection, microvillus . Colocalizes with F-actin in filopodia, cellular cortex and microvilli of the apical cell surface.
Expression :	Expressed at moderate levels in monocytes, myeloid blood dendritic cells and granulocytes and at low levels in plasmacytoid blood dendritic cells, monocyte-derived macrophages and monocyte-derived dendritic cells, with no expression detected in T-lymphocytes, B-lymphocytes and natural killer cells (at protein level). Expressed widely in different tissues, with highest expression levels in liver, lung, peripheral blood leukocytes and spleen, and lowest levels in neuronal tissues, skeletal muscle and ovary. Isoform 2 and isoform 3 are expressed in malignant Hodgkin lymphoma cells called Hodgkin and Reed-Sternberg (HRS) cells.
Sort :	5030
No4 :	1
Host :	Rabbit
Modifications :	Unmodified

Products Images



Immunohistochemistry analysis of paraffin-embedded human lymph node tissue, using CD302 Antibody. The picture on the right is blocked with the synthesized peptide.



Western blot analysis of lysates from HT-29 cells, using CD302 Antibody. The lane on the right is blocked with the synthesized peptide.