

α -tubulin (Acetyl Lys40) Monoclonal Antibody(4A8)

Catalog No :	YM3519
Reactivity :	Human;Rat;Mouse;Drosophila
Applications :	WB;IF;IHC
Target :	Tubulin α
Fields :	>>Phagosome;>>Apoptosis;>>Tight junction;>>Gap junction;>>Alzheimer disease;>>Parkinson disease;>>Amyotrophic lateral sclerosis;>>Huntington disease;>>Prion disease;>>Pathways of neurodegeneration - multiple diseases;>>Pathogenic Escherichia coli infection;>>Salmonella infection
Gene Name :	TUBA1B
Protein Name :	Tubulin alpha-1B chain (Alpha-tubulin ubiquitous) (Tubulin K-alpha-1) (Tubulin alpha-ubiquitous chain)
Human Gene Id :	7277
Human Swiss Prot No :	P68363
Mouse Swiss Prot No :	P05213
Rat Swiss Prot No :	Q6P9V9
Immunogen :	Synthetic Peptide of α -tubulin (Acetyl Lys40)
Specificity :	α -tubulin (Acetyl Lys40) protein detects endogenous levels of α -tubulin (Acetyl Lys40)
Formulation :	Liquid in PBS containing 50% glycerol, 0.5% BSA and 0.02% sodium azide.
Source :	Monoclonal, Mouse
Dilution :	WB 1:1000-2000, IHC 1:50-100 IF 1:200
Purification :	The antibody was affinity-purified from mouse ascites by affinity-

chromatography using specific immunogen.

Concentration : 1 mg/ml

Storage Stability : -15°C to -25°C/1 year(Do not lower than -25°C)

Observed Band : 52kD

Cell Pathway : Gap junction;Pathogenic Escherichia coli infection;

Background : function:Tubulin is the major constituent of microtubules. It binds two moles of GTP, one at an exchangeable site on the beta chain and one at a non-exchangeable site on the alpha-chain.,PTM:Undergoes a tyrosination/detyrosination cycle, the cyclic removal and re-addition of a C-terminal tyrosine residue by the enzymes tubulin tyrosine carboxypeptidase (TTCP) and tubulin tyrosine ligase (TTL), respectively.,similarity:Belongs to the tubulin family.,subunit:Dimer of alpha and beta chains.,

Function : function:Tubulin is the major constituent of microtubules. It binds two moles of GTP, one at an exchangeable site on the beta chain and one at a non-exchangeable site on the alpha-chain.,PTM:Undergoes a tyrosination/detyrosination cycle, the cyclic removal and re-addition of a C-terminal tyrosine residue by the enzymes tubulin tyrosine carboxypeptidase (TTCP) and tubulin tyrosine ligase (TTL), respectively.,similarity:Belongs to the tubulin family.,subunit:Dimer of alpha and beta chains.,

Subcellular Location : Cytoplasm, cytoskeleton.

Expression : Brain,Cajal-Retzius cell,Colon,Embryonic kidney,Eye,Fetal brain cortex,Keratinocyte

Tag : orthogonal,hot

Sort : 1447

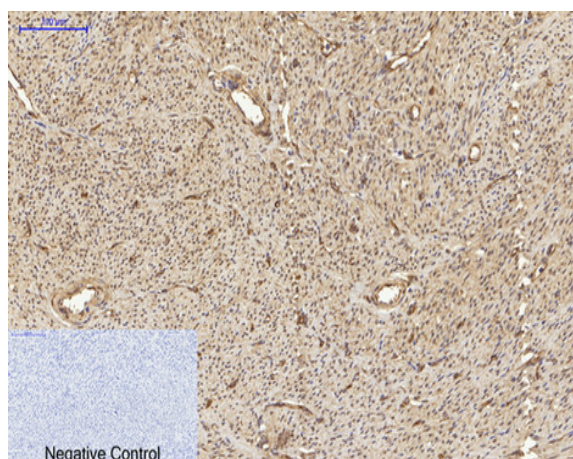
No3 : ab24610

No4 : 1

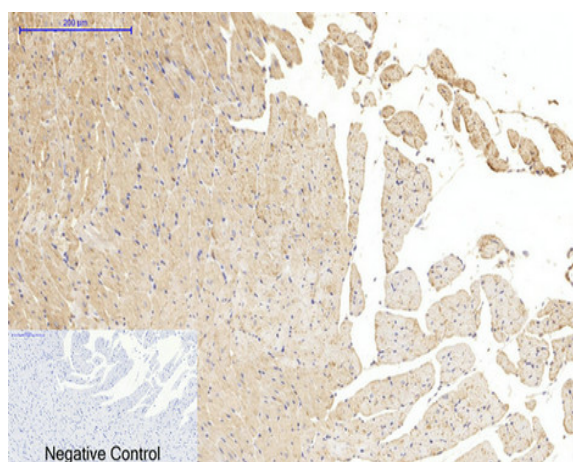
Host : Mouse

Modifications : Acetyl

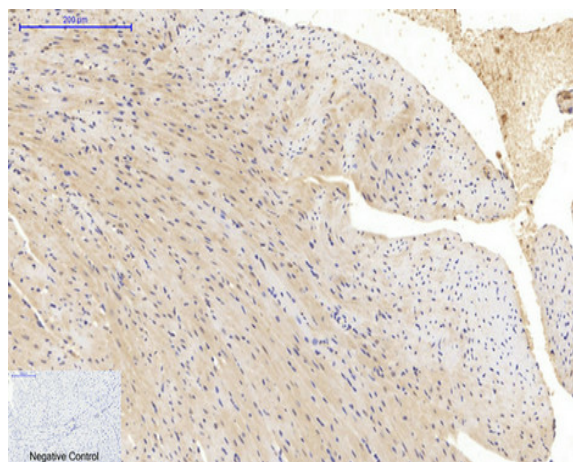
Products Images



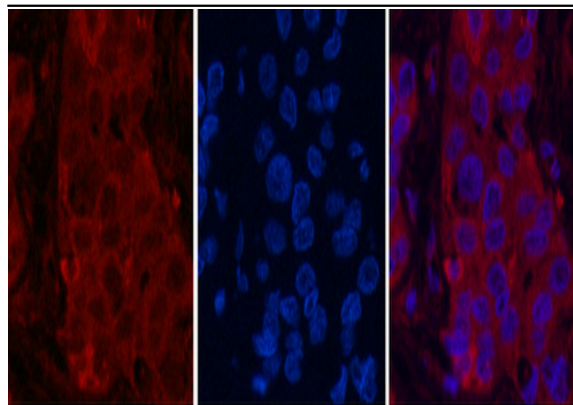
Immunohistochemical analysis of paraffin-embedded Human-uterus tissue. 1, α -tubulin (Acetyl Lys40) Monoclonal Antibody(4A8) was diluted at 1:200(4°C, overnight). 2, Sodium citrate pH 6.0 was used for antibody retrieval(>98°C, 20min). 3, Secondary antibody was diluted at 1:200(room temperature, 30min). Negative control was used by secondary antibody only.



Immunohistochemical analysis of paraffin-embedded Rat-heart tissue. 1, α -tubulin (Acetyl Lys40) Monoclonal Antibody(4A8) was diluted at 1:200(4°C, overnight). 2, Sodium citrate pH 6.0 was used for antibody retrieval(>98°C, 20min). 3, Secondary antibody was diluted at 1:200(room temperature, 30min). Negative control was used by secondary antibody only.



Immunohistochemical analysis of paraffin-embedded Mouse-heart tissue. 1, α -tubulin (Acetyl Lys40) Monoclonal Antibody(4A8) was diluted at 1:200(4°C, overnight). 2, Sodium citrate pH 6.0 was used for antibody retrieval(>98°C, 20min). 3, Secondary antibody was diluted at 1:200(room temperature, 30min). Negative control was used by secondary antibody only.

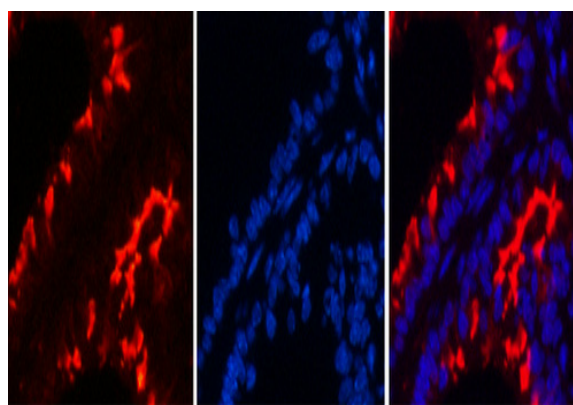


A

B

C

Immunofluorescence analysis of Human-liver-cancer tissue. 1, α -tubulin (Acetyl Lys40) Monoclonal Antibody(4A8)(red) was diluted at 1:200(4°C, overnight). 2, Cy3 labeled Secondary antibody was diluted at 1:300(room temperature, 50min).3, Picture B: DAPI(blue) 10min. Picture A:Target. Picture B: DAPI. Picture C: merge of A+B

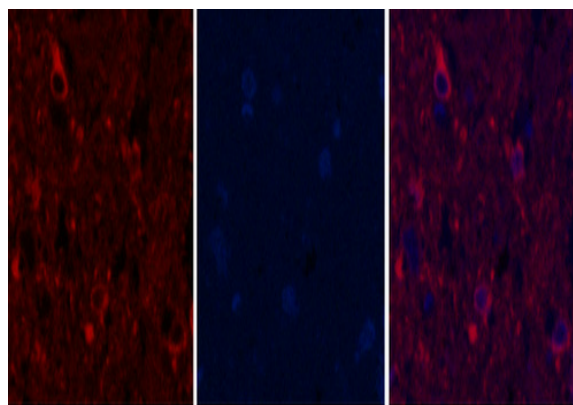


A

B

C

Immunofluorescence analysis of Mouse-lung tissue. 1, α -tubulin (Acetyl Lys40) Monoclonal Antibody(4A8)(red) was diluted at 1:200(4°C, overnight). 2, Cy3 labeled Secondary antibody was diluted at 1:300(room temperature, 50min).3, Picture B: DAPI(blue) 10min. Picture A:Target. Picture B: DAPI. Picture C: merge of A+B

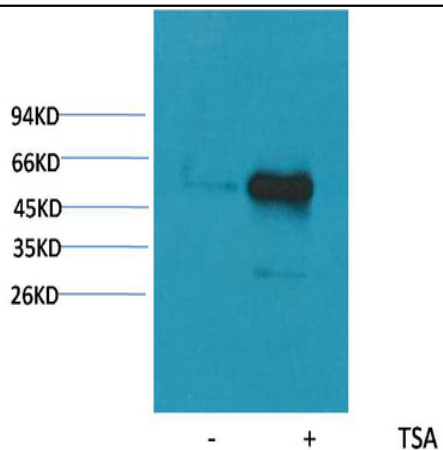


A

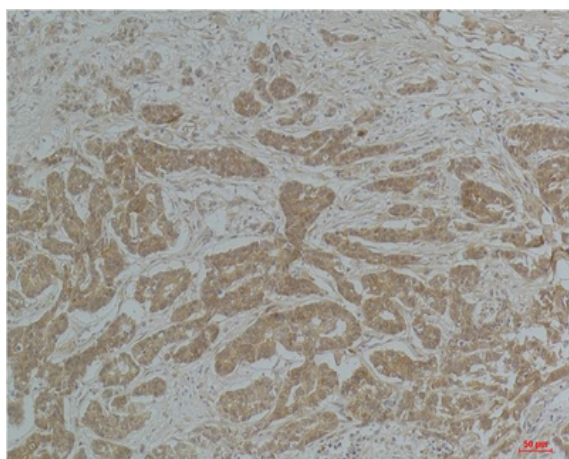
B

C

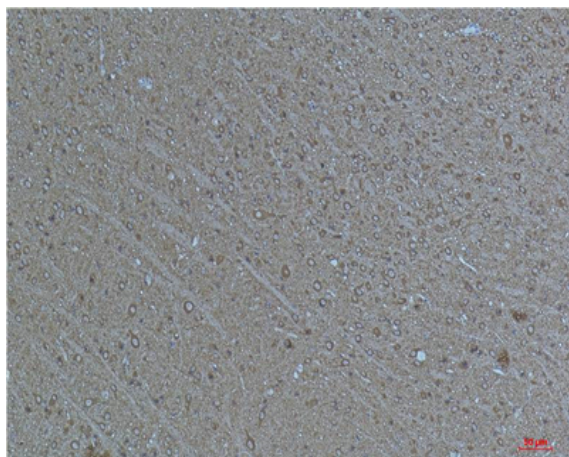
Immunofluorescence analysis of Rat-spinal-cord tissue. 1, α -tubulin (Acetyl Lys40) Monoclonal Antibody(4A8)(red) was diluted at 1:200(4°C, overnight). 2, Cy3 labeled Secondary antibody was diluted at 1:300(room temperature, 50min).3, Picture B: DAPI(blue) 10min. Picture A:Target. Picture B: DAPI. Picture C: merge of A+B



Western blot analysis of extracts from Hela cells, untreated (-) or treated with TSA (1 μ M, 18 hr; +), using Acetyl- α -tubulin(Lys40) Mouse mAb 1:2000.



Immunohistochemical analysis of paraffin-embedded Human Breast Carcinoma using α -tubulin(Acetyl Lys40) Mouse mAb diluted at 1:200.



Immunohistochemical analysis of paraffin-embedded Mouse Brain Tissue using α -tubulin(Acetyl Lys40) Mouse mAb diluted at 1:200.