

**DCAMKL3 Polyclonal Antibody**

<b>Catalog No :</b>	YT1299
<b>Reactivity :</b>	Human;Mouse
<b>Applications :</b>	WB;IHC;IF;ELISA
<b>Target :</b>	DCAMKL3
<b>Gene Name :</b>	DCLK3
<b>Protein Name :</b>	Serine/threonine-protein kinase DCLK3
<b>Human Gene Id :</b>	85443
<b>Human Swiss Prot No :</b>	Q9C098
<b>Mouse Swiss Prot No :</b>	Q8BWQ5
<b>Immunogen :</b>	The antiserum was produced against synthesized peptide derived from human DCLK3. AA range:291-340
<b>Specificity :</b>	DCAMKL3 Polyclonal Antibody detects endogenous levels of DCAMKL3 protein.
<b>Formulation :</b>	Liquid in PBS containing 50% glycerol, 0.5% BSA and 0.02% sodium azide.
<b>Source :</b>	Polyclonal, Rabbit,IgG
<b>Dilution :</b>	WB 1:500 - 1:2000. IHC 1:100 - 1:300. ELISA: 1:5000.. IF 1:50-200
<b>Purification :</b>	The antibody was affinity-purified from rabbit antiserum by affinity-chromatography using epitope-specific immunogen.
<b>Concentration :</b>	1 mg/ml
<b>Storage Stability :</b>	-15°C to -25°C/1 year(Do not lower than -25°C)
<b>Observed Band :</b>	73kD

**Background :** catalytic activity:ATP + a protein = ADP + a phosphoprotein.,similarity:Belongs to the protein kinase superfamily.,similarity:Belongs to the protein kinase superfamily. CAMK Ser/Thr protein kinase family. CaMK subfamily.,similarity:Contains 1 protein kinase domain.,

**Function :** catalytic activity:ATP + a protein = ADP + a phosphoprotein.,similarity:Belongs to the protein kinase superfamily.,similarity:Belongs to the protein kinase superfamily. CAMK Ser/Thr protein kinase family. CaMK subfamily.,similarity:Contains 1 protein kinase domain.,

**Subcellular Location :** Cytoplasm . Nucleus .

**Expression :** Brain,

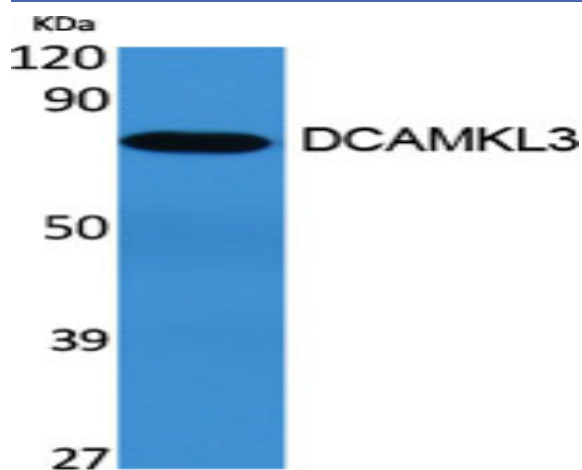
**Sort :** 5026

**No4 :** 1

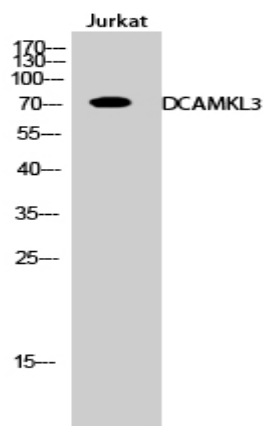
**Host :** Rabbit

**Modifications :** Unmodified

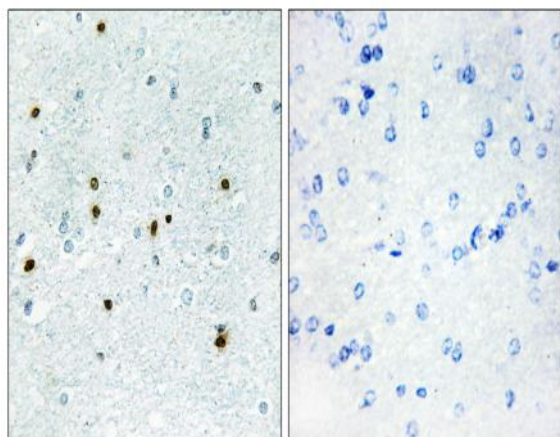
## Products Images



Western Blot analysis of various cells using DCAMKL3 Polyclonal Antibody



Western Blot analysis of Jurkat cells using DCAMKL3 Polyclonal Antibody



Immunohistochemistry analysis of paraffin-embedded human brain, using DCLK3 Antibody. The picture on the right is blocked with the synthesized peptide.