

DBP Polyclonal Antibody

Catalog No :	YT1297
Reactivity :	Human;Monkey
Applications :	WB;ELISA
Target :	DBP
Gene Name :	GC
Protein Name :	Vitamin D-binding protein
Human Gene Id :	2638
Human Swiss Prot No :	P02774
Mouse Swiss Prot No :	P21614
Immunogen :	Synthesized peptide derived from DBP . at AA range: 90-170
Specificity :	DBP Polyclonal Antibody detects endogenous levels of DBP protein.
Formulation :	Liquid in PBS containing 50% glycerol, 0.5% BSA and 0.02% sodium azide.
Source :	Polyclonal, Rabbit,IgG
Dilution :	WB 1:500 - 1:2000. ELISA: 1:40000. Not yet tested in other applications.
Purification :	The antibody was affinity-purified from rabbit antiserum by affinity-chromatography using epitope-specific immunogen.
Concentration :	1 mg/ml
Storage Stability :	-15°C to -25°C/1 year(Do not lower than -25°C)
Observed Band :	55kD

Background : The protein encoded by this gene belongs to the albumin gene family. It is a multifunctional protein found in plasma, ascitic fluid, cerebrospinal fluid and on the surface of many cell types. It binds to vitamin D and its plasma metabolites and transports them to target tissues. Alternatively spliced transcript variants encoding different isoforms have been found for this gene.[provided by RefSeq, Feb 2011],

Function : function:Multifunctional protein found in plasma, ascitic fluid, cerebrospinal fluid, and urine and on the surface of many cell types. In plasma, it carries the vitamin D sterols and prevents polymerization of actin by binding its monomers. DBP associates with membrane-bound immunoglobulin on the surface of B-lymphocytes and with IgG Fc receptor on the membranes of T-lymphocytes.,polymorphism:Over 80 variants of human DBP have been identified. The three most common alleles are called GC*1F, GC*1S, and GC*2. The sequence shown is that of the GC*2 allele.,similarity:Belongs to the ALB/AFP/VDB family.,similarity:Contains 3 albumin domains.,

Subcellular Location : Secreted .

Expression : Expressed in the liver. Found in plasma, ascites, cerebrospinal fluid and urine.

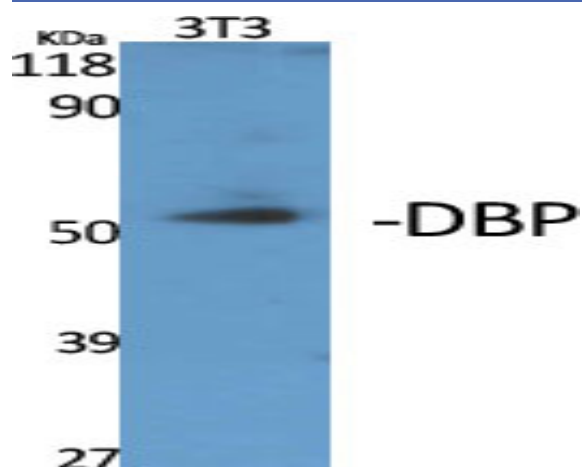
Sort : 5022

No4 : 1

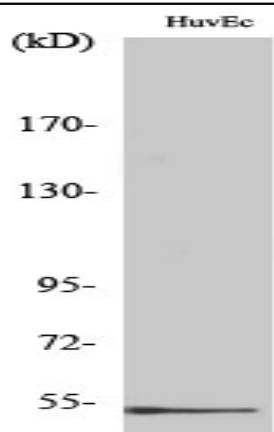
Host : Rabbit

Modifications : Unmodified

Products Images



Western Blot analysis of various cells using DBP Polyclonal Antibody



Western Blot analysis of COS7 cells using DBP Polyclonal Antibody