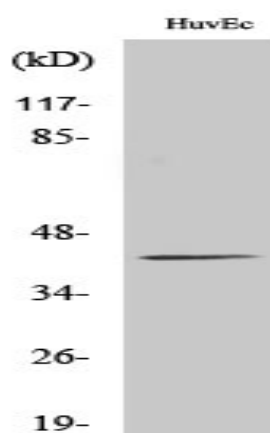


Endo G-L1 Polyclonal Antibody

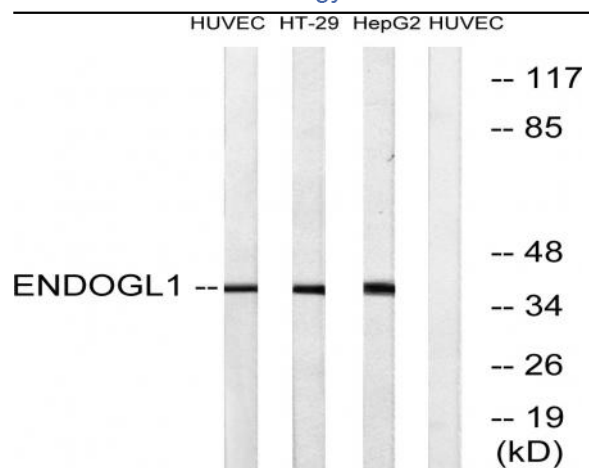
Catalog No :	YT1555
Reactivity :	Human;Rat;Mouse;
Applications :	WB;ELISA
Target :	Endo G-L1
Gene Name :	EXOG
Protein Name :	Nuclease EXOG mitochondrial
Human Gene Id :	9941
Human Swiss Prot No :	Q9Y2C4
Mouse Swiss Prot No :	Q8C163
Immunogen :	The antiserum was produced against synthesized peptide derived from human ENDOGL1. AA range:171-220
Specificity :	Endo G-L1 Polyclonal Antibody detects endogenous levels of Endo G-L1 protein.
Formulation :	Liquid in PBS containing 50% glycerol, 0.5% BSA and 0.02% sodium azide.
Source :	Polyclonal, Rabbit,IgG
Dilution :	WB 1:500 - 1:2000. ELISA: 1:40000. Not yet tested in other applications.
Purification :	The antibody was affinity-purified from rabbit antiserum by affinity-chromatography using epitope-specific immunogen.
Concentration :	1 mg/ml
Storage Stability :	-15°C to -25°C/1 year(Do not lower than -25°C)
Observed Band :	41kD

Cell Pathway :	<u>Apoptosis_Inhibition;Apoptosis_Mitochondrial;Apoptosis_Overview;</u>
Background :	<u>This gene encodes an endo/exonuclease with 5'-3' exonuclease activity. The encoded enzyme catalyzes the hydrolysis of ester linkages at the 5' end of a nucleic acid chain. This enzyme is localized to the mitochondria and may play a role in programmed cell death. Alternatively spliced transcript variants have been described. A pseudogene exists on chromosome 18. [provided by RefSeq, Feb 2009],</u>
Function :	<u>cofactor:Divalent metal cations.,function:Endo/exonuclease with nicking activity towards supercoiled DNA, a preference for single stranded DNA and 5'-3' exonuclease activity.,miscellaneous:The active site contains 1 hydrated divalent metal cation that has only 1 direct interaction with the protein; all other interactions are via water molecules.,similarity:Belongs to the DNA/RNA non-specific endonuclease family.,subunit:Homodimer.,tissue specificity:Ubiquitous.,</u>
Subcellular Location :	<u>Mitochondrion inner membrane .</u>
Expression :	<u>Ubiquitous.</u>
Sort :	<u>5553</u>
No4 :	<u>1</u>
Host :	<u>Rabbit</u>
Modifications :	<u>Unmodified</u>

Products Images



Western Blot analysis of various cells using Endo G-L1 Polyclonal Antibody



Western blot analysis of lysates from HUVEC, HT-29, and HepG2 cells, using ENDOGL1 Antibody. The lane on the right is blocked with the synthesized peptide.