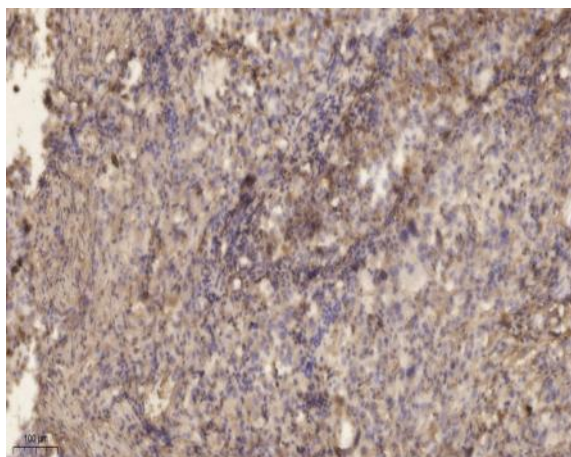


ELOVL2 Polyclonal Antibody

Catalog No :	YT1536
Reactivity :	Human;Rat;Mouse;
Applications :	IHC;IF;ELISA
Target :	ELOVL2
Fields :	>>Fatty acid elongation;>>Biosynthesis of unsaturated fatty acids;>>Metabolic pathways;>>Fatty acid metabolism
Gene Name :	ELOVL2
Protein Name :	Elongation of very long chain fatty acids protein 2
Human Gene Id :	54898
Human Swiss Prot No :	Q9NXB9
Mouse Swiss Prot No :	Q9JLJ4
Immunogen :	The antiserum was produced against synthesized peptide derived from human ELOVL2. AA range:250-296
Specificity :	ELOVL2 Polyclonal Antibody detects endogenous levels of ELOVL2 protein.
Formulation :	Liquid in PBS containing 50% glycerol, 0.5% BSA and 0.02% sodium azide.
Source :	Polyclonal, Rabbit,IgG
Dilution :	IHC 1:100 - 1:300. ELISA: 1:10000.. IF 1:50-200
Purification :	The antibody was affinity-purified from rabbit antiserum by affinity-chromatography using epitope-specific immunogen.
Concentration :	1 mg/ml
Storage Stability :	-15°C to -25°C/1 year(Do not lower than -25°C)

Molecularweight :	35kD
Cell Pathway :	Biosynthesis of unsaturated fatty acids;
Background :	domain:The di-lysine motif confers endoplasmic reticulum localization for type I membrane proteins.,function:Could be implicated in tissue-specific synthesis of very long chain fatty acids and sphingolipids. May catalyze one or both of the reduction reaction in fatty acid elongation, i.e., conversion of beta-ketoacyl CoA to beta-hydroxyacyl CoA or reduction of trans-2-enoyl CoA to the saturated acyl CoA derivative.,similarity:Belongs to the ELO family.,
Function :	domain:The di-lysine motif confers endoplasmic reticulum localization for type I membrane proteins.,function:Could be implicated in tissue-specific synthesis of very long chain fatty acids and sphingolipids. May catalyze one or both of the reduction reaction in fatty acid elongation, i.e., conversion of beta-ketoacyl CoA to beta-hydroxyacyl CoA or reduction of trans-2-enoyl CoA to the saturated acyl CoA derivative.,similarity:Belongs to the ELO family.,
Subcellular Location :	Endoplasmic reticulum membrane ; Multi-pass membrane protein .
Expression :	Liver and testis.
Sort :	5521
No4 :	1
Host :	Rabbit
Modifications :	Unmodified

Products Images



Immunohistochemical analysis of paraffin-embedded human lung cancer. 1, Antibody was diluted at 1:200(4° overnight). 2, Tris-EDTA,pH9.0 was used for antigen retrieval. 3,Secondary antibody was diluted at 1:200(room temperature, 45min).