

## EKLf/CKLf/UKLf Polyclonal Antibody

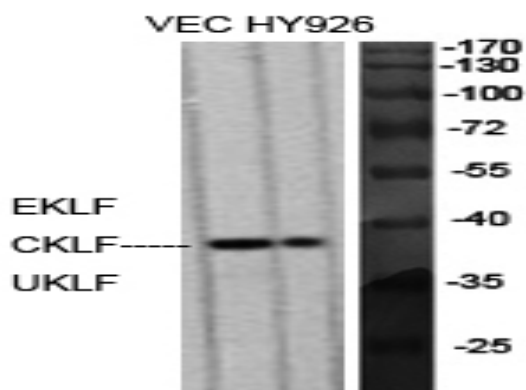
<b>Catalog No :</b>	YT1522
<b>Reactivity :</b>	Human;Mouse;Rat
<b>Applications :</b>	WB;IF;ELISA
<b>Target :</b>	EKLf/CKLf/UKLf
<b>Gene Name :</b>	KLFl/KLl5/KLl7
<b>Protein Name :</b>	Krueppel-like factor 1/Krueppel-like factor 5/Krueppel-like factor 7
<b>Human Gene Id :</b>	10661/688/8609
<b>Human Swiss Prot No :</b>	Q13351/Q13887/O75840
<b>Mouse Gene Id :</b>	12224/93691
<b>Immunogen :</b>	The antiserum was produced against synthesized peptide derived from human KLf. AA range:291-340
<b>Specificity :</b>	EKLf/CKLf/UKLf Polyclonal Antibody detects endogenous levels of EKLf/CKLf/UKLf protein.
<b>Formulation :</b>	Liquid in PBS containing 50% glycerol, 0.5% BSA and 0.02% sodium azide.
<b>Source :</b>	Polyclonal, Rabbit,IgG
<b>Dilution :</b>	WB 1:500 - 1:2000. IF 1:200 - 1:1000. ELISA: 1:20000. Not yet tested in other applications.
<b>Purification :</b>	The antibody was affinity-purified from rabbit antiserum by affinity-chromatography using epitope-specific immunogen.
<b>Concentration :</b>	1 mg/ml
<b>Storage Stability :</b>	-15°C to -25°C/1 year(Do not lower than -25°C)

---

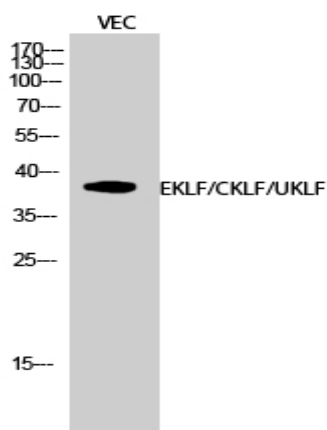
<b>Observed Band :</b>	38kD(EKLF) 20kD(CKLF/UKLF)
<b>Cell Pathway :</b>	Protein_Acetylation
<b>Background :</b>	This gene encodes a hematopoietic-specific transcription factor that induces high-level expression of adult beta-globin and other erythroid genes. The zinc-finger protein binds to the DNA sequence CCACACCCT found in the beta hemoglobin promoter. Heterozygous loss-of-function mutations in this gene result in the dominant In(Lu) blood phenotype. [provided by RefSeq, Oct 2009],
<b>Function :</b>	function:Transcription regulator of erythrocyte development. Binds to the CACCC box in the beta-globin gene promoter and activates transcription. When sumoylation, acts as a Probably serves as a general switch factor for erythroid development. When sumoylated, acts as a transcriptional repressor, by promoting interaction with CDH2/MI2beta and also represses megakaryocytic differentiation.,PTM:Acetylated; can be acetylated on both Lys-274 and Lys-288. Acetylation on Lys-274 (by CBP) appears to be the major site affecting EKLF transactivation activity.,PTM:Phosphorylated primarily on serine residues in the transactivation domain. Phosphorylation on Thr-23 is critical for the transactivation activity.,PTM:Sumoylated; sumoylation, promoted by PIAS1, leads to repression of megakaryocyte differentiation. Also promotes the interaction with the CDH4 subunit of the NuRD repression complex.,simila
<b>Subcellular Location :</b>	Nucleus . Colocalizes with SUMO1 in nuclear speckles. .
<b>Expression :</b>	Expression restricted to adult bone marrow and fetal liver. Not expressed in myeloid nor lymphoid cell lines.
<b>Tag :</b>	orthogonal
<b>Sort :</b>	5496
<b>No4 :</b>	1
<b>Host :</b>	Rabbit
<b>Modifications :</b>	Unmodified

---

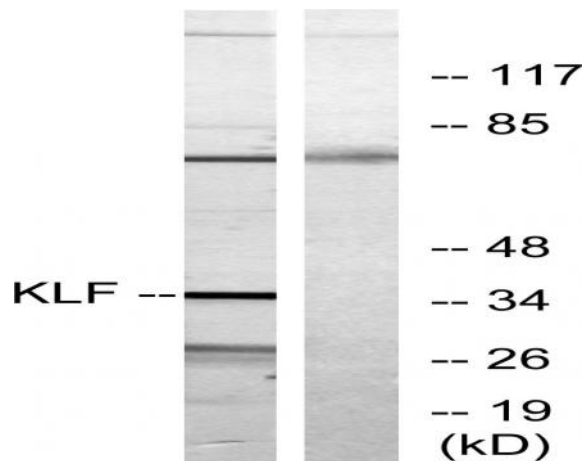
## Products Images



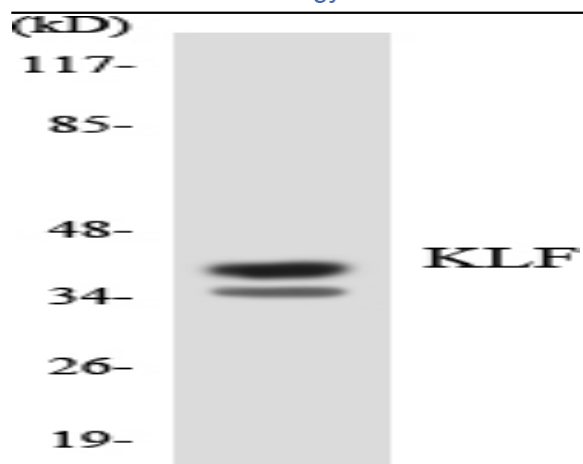
Western Blot analysis of various cells using EKLK/CKLF/UKLF Polyclonal Antibody diluted at 1:500 cells nucleus extracted by Minute TM Cytoplasmic and Nuclear Fractionation kit (SC-003, Inventbiotech, MN, USA).



Western Blot analysis of VEC cells using EKLK/CKLF/UKLF Polyclonal Antibody diluted at 1:500 cells nucleus extracted by Minute TM Cytoplasmic and Nuclear Fractionation kit (SC-003, Inventbiotech, MN, USA).



Western blot analysis of lysates from Jurkat cells, treated with serum 20% 15', using KLF Antibody. The lane on the right is blocked with the synthesized peptide.



Western blot analysis of the lysates from K562 cells using KLF antibody.