

## CYP3A43 Polyclonal Antibody

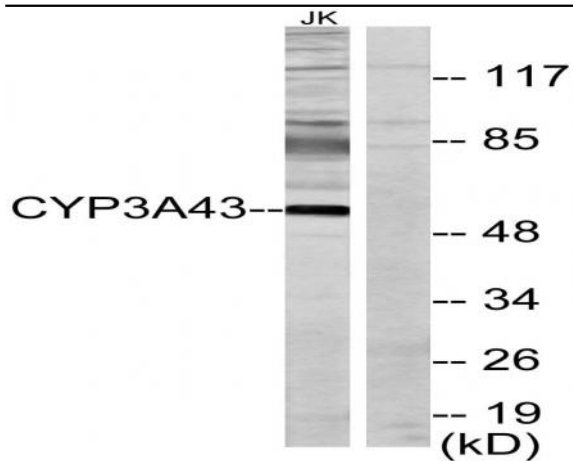
<b>Catalog No :</b>	YT1230
<b>Reactivity :</b>	Human
<b>Applications :</b>	WB;IHC;IF;ELISA
<b>Target :</b>	CYP3A43
<b>Fields :</b>	>>Chemical carcinogenesis - DNA adducts
<b>Gene Name :</b>	CYP3A43
<b>Protein Name :</b>	Cytochrome P450 3A43
<b>Human Gene Id :</b>	64816
<b>Human Swiss Prot No :</b>	Q9HB55
<b>Immunogen :</b>	The antiserum was produced against synthesized peptide derived from human Cytochrome P450 3A43. AA range:231-280
<b>Specificity :</b>	CYP3A43 Polyclonal Antibody detects endogenous levels of CYP3A43 protein.
<b>Formulation :</b>	Liquid in PBS containing 50% glycerol, 0.5% BSA and 0.02% sodium azide.
<b>Source :</b>	Polyclonal, Rabbit,IgG
<b>Dilution :</b>	WB 1:500 - 1:2000. IHC 1:100 - 1:300. ELISA: 1:20000.. IF 1:50-200
<b>Purification :</b>	The antibody was affinity-purified from rabbit antiserum by affinity-chromatography using epitope-specific immunogen.
<b>Concentration :</b>	1 mg/ml
<b>Storage Stability :</b>	-15°C to -25°C/1 year(Do not lower than -25°C)
<b>Observed Band :</b>	57kD

---

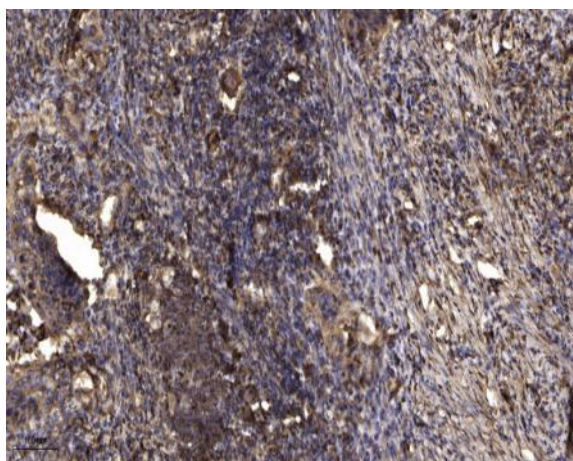
<b>Cell Pathway :</b>	Steroid hormone biosynthesis;Linoleic acid metabolism;Retinol metabolism;Metabolism of xenobiotics by cytochrome P450;Drug metabolism;Drug metabolism;
<b>Background :</b>	cytochrome P450 family 3 subfamily A member 43(CYP3A43) Homo sapiens This gene encodes a member of the cytochrome P450 superfamily of enzymes. The cytochrome P450 proteins are monooxygenases which catalyze many reactions involved in drug metabolism and synthesis of cholesterol, steroids and other lipids. The encoded protein has a low level of testosterone hydroxylase activity, and may play a role in aging mechanisms and cancer progression. This gene is part of a cluster of cytochrome P450 genes on chromosome 7q21.1. Alternate splicing results in multiple transcript variants encoding different isoforms. [provided by RefSeq, Jul 2013],
<b>Function :</b>	alternative products:Additional isoforms seem to exist,catalytic activity:RH + reduced flavoprotein + O(2) = ROH + oxidized flavoprotein + H(2)O.,cofactor:Heme group.,function:Exhibits low testosterone 6-beta-hydroxylase activity.,induction:By rifampicin.,online information:CYP3A43 alleles,polymorphism:At protein level, three alleles are known: CYP3A43*1, CYP3A43*2 and CYP3A43*3. The sequence shown is that of CYP3A43*1, which is the most frequent allele. The allele CYP3A43*2 is likely to be non-functional.,similarity:Belongs to the cytochrome P450 family.,tissue specificity:Highest expression level in prostate. Also expressed in liver, kidney, pancreas, fetal liver and fetal skeletal muscle.,
<b>Subcellular Location :</b>	Endoplasmic reticulum membrane; Peripheral membrane protein. Microsome membrane; Peripheral membrane protein.
<b>Expression :</b>	Highest expression level in prostate. Also expressed in liver, kidney, pancreas, fetal liver and fetal skeletal muscle.
<b>Sort :</b>	4811
<b>No4 :</b>	1
<b>Host :</b>	Rabbit
<b>Modifications :</b>	Unmodified

---

## Products Images



Western blot analysis of lysates from Jurkat cells, using Cytochrome P450 3A43 Antibody. The lane on the right is blocked with the synthesized peptide.



Immunohistochemical analysis of paraffin-embedded human Squamous cell carcinoma of lung. 1, Antibody was diluted at 1:200(4° overnight). 2, Tris-EDTA,pH9.0 was used for antigen retrieval. 3,Secondary antibody was diluted at 1:200(room temperature, 45min).