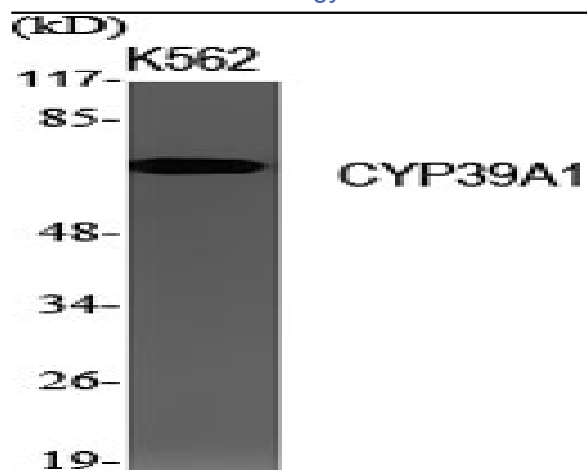


CYP39A1 Polyclonal Antibody

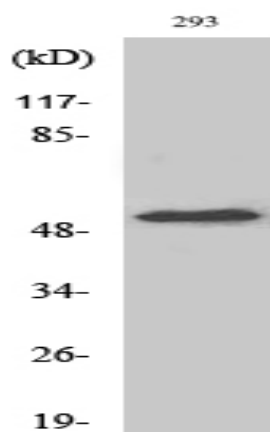
| | |
|------------------------------|---|
| Catalog No : | YT1227 |
| Reactivity : | Human;Mouse |
| Applications : | WB;IHC;IF;ELISA |
| Target : | CYP39A1 |
| Fields : | >>Primary bile acid biosynthesis |
| Gene Name : | CYP39A1 |
| Protein Name : | 24-hydroxycholesterol 7-alpha-hydroxylase |
| Human Gene Id : | 51302 |
| Human Swiss Prot No : | Q9NYL5 |
| Mouse Swiss Prot No : | Q9JKJ9 |
| Immunogen : | Synthesized peptide derived from the Internal region of human CYP39A1. |
| Specificity : | CYP39A1 Polyclonal Antibody detects endogenous levels of CYP39A1 protein. |
| Formulation : | Liquid in PBS containing 50% glycerol, 0.5% BSA and 0.02% sodium azide. |
| Source : | Polyclonal, Rabbit,IgG |
| Dilution : | WB 1:500 - 1:2000. IHC 1:100 - 1:300. ELISA: 1:40000.. IF 1:50-200 |
| Purification : | The antibody was affinity-purified from rabbit antiserum by affinity-chromatography using epitope-specific immunogen. |
| Concentration : | 1 mg/ml |
| Storage Stability : | -15°C to -25°C/1 year(Do not lower than -25°C) |

| | |
|-------------------------------|--|
| Observed Band : | 55kD |
| Cell Pathway : | Primary bile acid biosynthesis; |
| Background : | cytochrome P450 family 39 subfamily A member 1 (CYP39A1) Homo sapiens This gene encodes a member of the cytochrome P450 superfamily of enzymes. The cytochrome P450 proteins are monooxygenases which catalyze many reactions involved in drug metabolism and synthesis of cholesterol, steroids and other lipids. This endoplasmic reticulum protein is involved in the conversion of cholesterol to bile acids. Its substrates include the oxysterols 25-hydroxycholesterol, 27-hydroxycholesterol and 24-hydroxycholesterol. Alternate splicing results in multiple transcript variants. [provided by RefSeq, Jul 2013], |
| Function : | catalytic activity:(24R)-cholest-5-ene-3-beta,24-diol + NADPH + O(2) = (24R)-cholest-5-ene-3-beta,7-alpha,24-triol + NADP(+) + H(2)O.,cofactor:Heme group.,function:Involved in the bile acid metabolism. Has a preference for 24-hydroxycholesterol, and converts it into a 7-alpha-hydroxylated product.,similarity:Belongs to the cytochrome P450 family.,tissue specificity:Liver specific., |
| Subcellular Location : | Endoplasmic reticulum membrane ; Multi-pass membrane protein . Microsome membrane ; Multi-pass membrane protein . |
| Expression : | Liver specific. |
| Sort : | 4807 |
| No4 : | 1 |
| Host : | Rabbit |
| Modifications : | Unmodified |

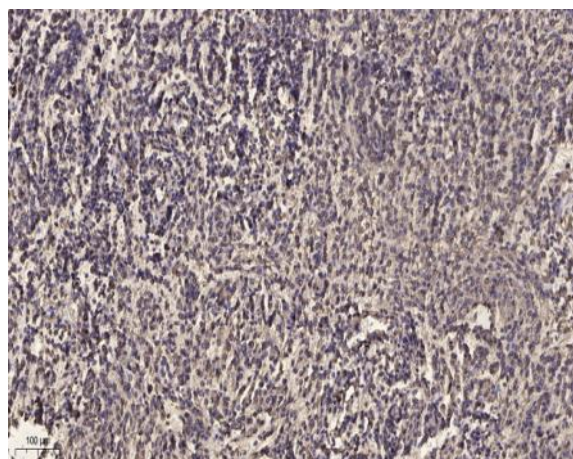
Products Images



Western Blot analysis of various cells using CYP39A1 Polyclonal Antibody



Western Blot analysis of HeLa cells using CYP39A1 Polyclonal Antibody



Immunohistochemical analysis of paraffin-embedded human meningioma. 1, Antibody was diluted at 1:200(4° overnight). 2, Tris-EDTA,pH9.0 was used for antigen retrieval. 3,Secondary antibody was diluted at 1:200(room temperature, 45min).