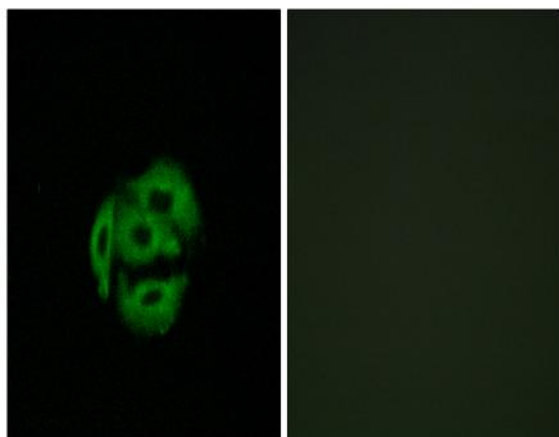


CYP39A1 Polyclonal Antibody

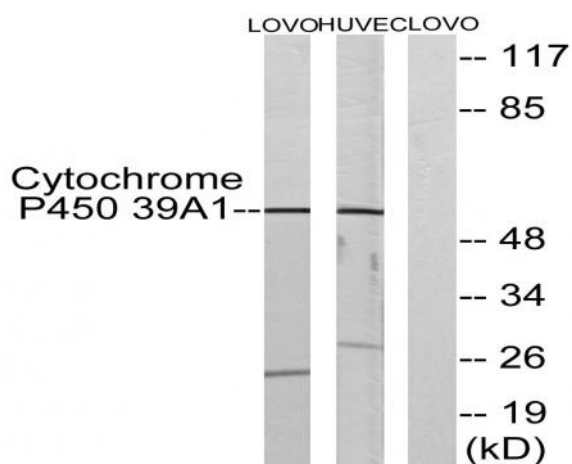
Catalog No :	YT1226
Reactivity :	Human;Mouse
Applications :	WB;IHC;IF;ELISA
Target :	CYP39A1
Fields :	>>Primary bile acid biosynthesis
Gene Name :	CYP39A1
Protein Name :	24-hydroxycholesterol 7-alpha-hydroxylase
Human Gene Id :	51302
Human Swiss Prot No :	Q9NYL5
Mouse Gene Id :	56050
Mouse Swiss Prot No :	Q9JKJ9
Immunogen :	The antiserum was produced against synthesized peptide derived from human Cytochrome P450 39A1. AA range:361-410
Specificity :	CYP39A1 Polyclonal Antibody detects endogenous levels of CYP39A1 protein.
Formulation :	Liquid in PBS containing 50% glycerol, 0.5% BSA and 0.02% sodium azide.
Source :	Polyclonal, Rabbit,IgG
Dilution :	WB 1:500 - 1:2000. IHC 1:100 - 1:300. IF 1:200 - 1:1000. ELISA: 1:10000. Not yet tested in other applications.
Purification :	The antibody was affinity-purified from rabbit antiserum by affinity-chromatography using epitope-specific immunogen.
Concentration :	1 mg/ml

Storage Stability :	-15°C to -25°C/1 year(Do not lower than -25°C)
Observed Band :	54kD
Cell Pathway :	Primary bile acid biosynthesis;
Background :	cytochrome P450 family 39 subfamily A member 1(CYP39A1) Homo sapiens This gene encodes a member of the cytochrome P450 superfamily of enzymes. The cytochrome P450 proteins are monooxygenases which catalyze many reactions involved in drug metabolism and synthesis of cholesterol, steroids and other lipids. This endoplasmic reticulum protein is involved in the conversion of cholesterol to bile acids. Its substrates include the oxysterols 25-hydroxycholesterol, 27-hydroxycholesterol and 24-hydroxycholesterol. Alternate splicing results in multiple transcript variants. [provided by RefSeq, Jul 2013],
Function :	catalytic activity:(24R)-cholest-5-ene-3-beta,24-diol + NADPH + O(2) = (24R)-cholest-5-ene-3-beta,7-alpha,24-triol + NADP(+) + H(2)O.,cofactor:Heme group.,function:Involved in the bile acid metabolism. Has a preference for 24-hydroxycholesterol, and converts it into a 7-alpha-hydroxylated product.,similarity:Belongs to the cytochrome P450 family.,tissue specificity:Liver specific.,
Subcellular Location :	Endoplasmic reticulum membrane ; Multi-pass membrane protein . Microsome membrane ; Multi-pass membrane protein .
Expression :	Liver specific.
Sort :	4808
No4 :	1
Host :	Rabbit
Modifications :	Unmodified

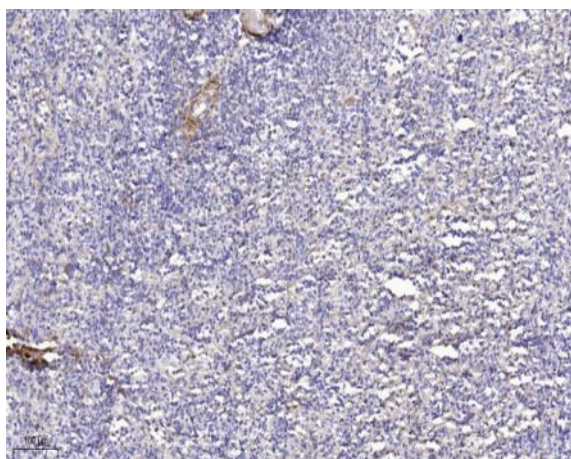
Products Images



Immunofluorescence analysis of A549 cells, using Cytochrome P450 39A1 Antibody. The picture on the right is blocked with the synthesized peptide.



Western blot analysis of lysates from LOVO and HUVEC cells, using Cytochrome P450 39A1 Antibody. The lane on the right is blocked with the synthesized peptide.



Immunohistochemical analysis of paraffin-embedded human spleen. 1, Antibody was diluted at 1:200(4° overnight). 2, Tris-EDTA,pH9.0 was used for antigen retrieval. 3,Secondary antibody was diluted at 1:200(room temperature, 45min).