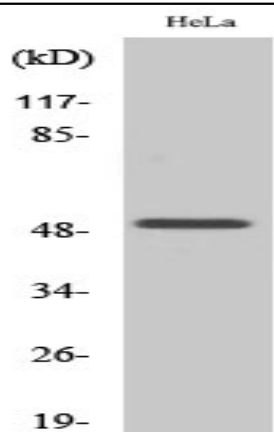


## Egr-2 Polyclonal Antibody

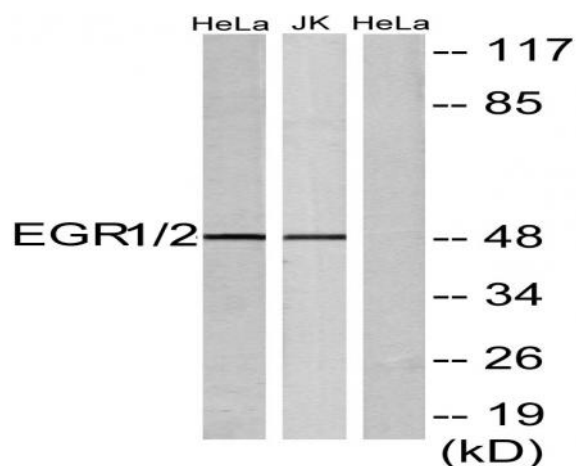
<b>Catalog No :</b>	YT1498
<b>Reactivity :</b>	Human;Mouse;Rat
<b>Applications :</b>	WB;IHC;IF;ELISA
<b>Target :</b>	Egr-2
<b>Fields :</b>	>>Apelin signaling pathway;>>GnRH signaling pathway;>>Parathyroid hormone synthesis, secretion and action;>>AGE-RAGE signaling pathway in diabetic complications;>>Prion disease;>>Human T-cell leukemia virus 1 infection
<b>Gene Name :</b>	EGR2
<b>Protein Name :</b>	Early growth response protein 2
<b>Human Gene Id :</b>	1958/1959
<b>Human Swiss Prot No :</b>	P18146/P11161
<b>Mouse Gene Id :</b>	13653/13654
<b>Rat Gene Id :</b>	24330/114090
<b>Rat Swiss Prot No :</b>	P08154/P51774
<b>Immunogen :</b>	The antiserum was produced against synthesized peptide derived from human EGR1/2. AA range:371-420
<b>Specificity :</b>	Egr-2 Polyclonal Antibody detects endogenous levels of Egr-2 protein.
<b>Formulation :</b>	Liquid in PBS containing 50% glycerol, 0.5% BSA and 0.02% sodium azide.
<b>Source :</b>	Polyclonal, Rabbit,IgG
<b>Dilution :</b>	WB 1:500 - 1:2000. IHC 1:100 - 1:300. IF 1:200 - 1:1000. ELISA: 1:20000. Not yet tested in other applications.

<b>Purification :</b>	The antibody was affinity-purified from rabbit antiserum by affinity-chromatography using epitope-specific immunogen.
<b>Concentration :</b>	1 mg/ml
<b>Storage Stability :</b>	-15°C to -25°C/1 year(Do not lower than -25°C)
<b>Observed Band :</b>	50kD
<b>Cell Pathway :</b>	Prion diseases;
<b>Background :</b>	The protein encoded by this gene belongs to the EGR family of C2H2-type zinc-finger proteins. It is a nuclear protein and functions as a transcriptional regulator. The products of target genes it activates are required for differentiation and mitogenesis. Studies suggest this is a cancer suppressor gene. [provided by RefSeq, Dec 2014],
<b>Function :</b>	function:Transcriptional regulator. Recognizes and binds to the DNA sequence 5'-CGCCCCCGC-3'(EGR-site). Activates the transcription of target genes whose products are required for mitogenesis and differentiation.,induction:By growth factors.,similarity:Belongs to the EGR C2H2-type zinc-finger protein family.,similarity:Contains 3 C2H2-type zinc fingers.,
<b>Subcellular Location :</b>	Nucleus . Cytoplasm .
<b>Expression :</b>	Detected in neutrophils (at protein level).
<b>Tag :</b>	hot
<b>Sort :</b>	5453
<b>No4 :</b>	1
<b>Host :</b>	Rabbit
<b>Modifications :</b>	Unmodified

## Products Images



Western Blot analysis of various cells using Egr-2 Polyclonal Antibody cells nucleus extracted by Minute TM Cytoplasmic and Nuclear Fractionation kit (SC-003, Inventbiotech, MN, USA).



Western blot analysis of lysates from HeLa and Jurkat cells, using EGR1/2 Antibody. The lane on the right is blocked with the synthesized peptide.



Immunohistochemical analysis of paraffin-embedded human tonsil. 1, Tris-EDTA, pH9.0 was used for antigen retrieval. 2 Antibody was diluted at 1:200 (4° overnight). 3, Secondary antibody was diluted at 1:200 (room temperature, 45min).