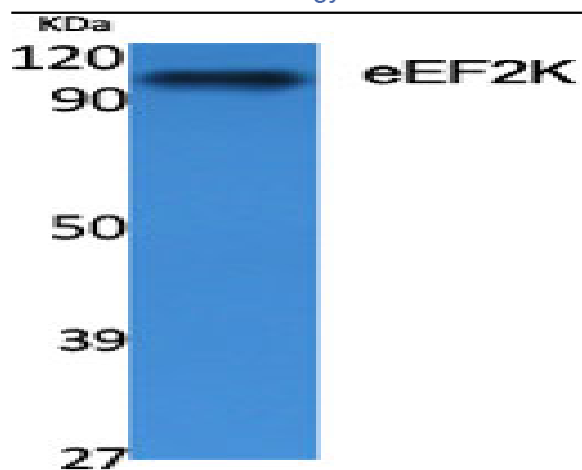


eEF2K Polyclonal Antibody

Catalog No :	YT1474
Reactivity :	Human;Rat
Applications :	WB;IHC;IF;ELISA
Target :	eEF2K
Fields :	>>AMPK signaling pathway;>>Oxytocin signaling pathway
Gene Name :	EEF2K
Protein Name :	Eukaryotic elongation factor 2 kinase
Human Gene Id :	29904
Human Swiss Prot No :	O00418
Mouse Swiss Prot No :	O08796
Rat Gene Id :	25435
Rat Swiss Prot No :	P70531
Immunogen :	The antiserum was produced against synthesized peptide derived from human eEF2K. AA range:331-380
Specificity :	eEF2K Polyclonal Antibody detects endogenous levels of eEF2K protein.
Formulation :	Liquid in PBS containing 50% glycerol, 0.5% BSA and 0.02% sodium azide.
Source :	Polyclonal, Rabbit,IgG
Dilution :	WB 1:500 - 1:2000. IHC 1:100 - 1:300. ELISA: 1:20000.. IF 1:50-200
Purification :	The antibody was affinity-purified from rabbit antiserum by affinity-chromatography using epitope-specific immunogen.

Concentration :	1 mg/ml
Storage Stability :	-15°C to -25°C/1 year(Do not lower than -25°C)
Observed Band :	105kD
Cell Pathway :	AMPK
Background :	This gene encodes a highly conserved protein kinase in the calmodulin-mediated signaling pathway that links activation of cell surface receptors to cell division. This kinase is involved in the regulation of protein synthesis. It phosphorylates eukaryotic elongation factor 2 (EEF2) and thus inhibits the EEF2 function. The activity of this kinase is increased in many cancers and may be a valid target for anti-cancer treatment. [provided by RefSeq, Jul 2008],
Function :	catalytic activity:ATP + [elongation factor 2] = ADP + [elongation factor 2] phosphate.,enzyme regulation:Undergoes calcium/calmodulin-dependent intramolecular autophosphorylation, and this results in it becoming partially calcium/calmodulin-independent.,function:Phosphorylates eukaryotic elongation factor-2. Binds calmodulin.,similarity:Belongs to the protein kinase superfamily. Alpha-type protein kinase family.,similarity:Contains 1 alpha-type protein kinase domain.,subunit:Monomer or homodimer .,
Subcellular Location :	cytoplasm,cytosol,postsynaptic density,
Expression :	Epithelium,Glial tumor,Lymph,T-cell,
Tag :	orthogonal,hot
Sort :	5420
No4 :	1
Host :	Rabbit
Modifications :	Unmodified

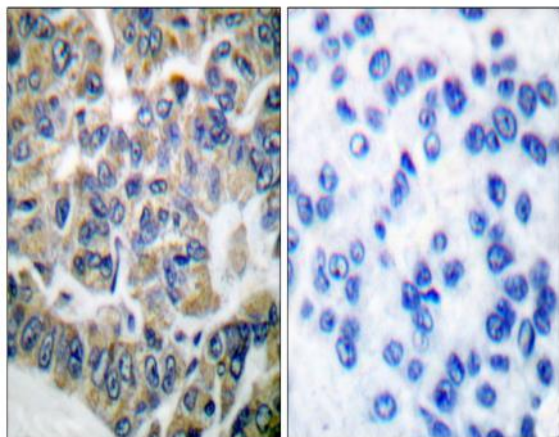
Products Images



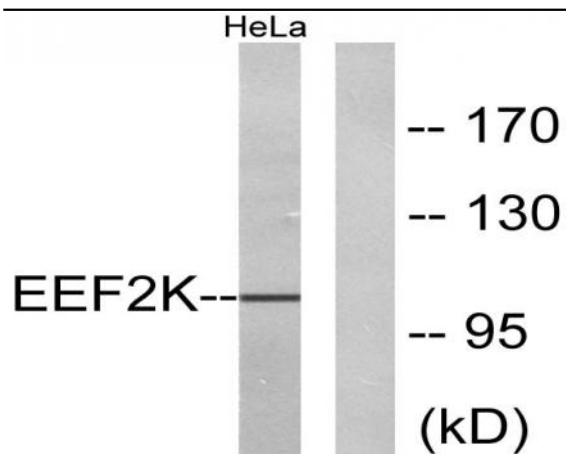
Western Blot analysis of various cells using eEF2K Polyclonal Antibody diluted at 1:500



Western Blot analysis of HeLa cells using eEF2K Polyclonal Antibody diluted at 1:500



Immunohistochemistry analysis of paraffin-embedded human breast carcinoma tissue, using eEF2K Antibody. The picture on the right is blocked with the synthesized peptide.



Western blot analysis of lysates from HeLa cells, treated with serum 10% 15', using eEF2K Antibody. The lane on the right is blocked with the synthesized peptide.