

## Dynein LC 2B Polyclonal Antibody

<b>Catalog No :</b>	YT1433
<b>Reactivity :</b>	Human;Mouse
<b>Applications :</b>	IHC;IF;ELISA
<b>Target :</b>	Dynein LC 2B
<b>Fields :</b>	>>Salmonella infection
<b>Gene Name :</b>	DYNLRB2
<b>Protein Name :</b>	Dynein light chain roadblock-type 2
<b>Human Gene Id :</b>	83657
<b>Human Swiss Prot No :</b>	Q8TF09
<b>Mouse Gene Id :</b>	75465
<b>Mouse Swiss Prot No :</b>	Q9DAJ5
<b>Immunogen :</b>	The antiserum was produced against synthesized peptide derived from human DYNLRB2. AA range:21-70
<b>Specificity :</b>	Dynein LC 2B Polyclonal Antibody detects endogenous levels of Dynein LC 2B protein.
<b>Formulation :</b>	Liquid in PBS containing 50% glycerol, 0.5% BSA and 0.02% sodium azide.
<b>Source :</b>	Polyclonal, Rabbit,IgG
<b>Dilution :</b>	IHC 1:100 - 1:300. ELISA: 1:10000.. IF 1:50-200
<b>Purification :</b>	The antibody was affinity-purified from rabbit antiserum by affinity-chromatography using epitope-specific immunogen.
<b>Concentration :</b>	1 mg/ml

**Storage Stability :** -15°C to -25°C/1 year(Do not lower than -25°C)

**Molecularweight :** 11kD

**Background :** function:May be involved in assembly and motor function of dynein, which plays a central role in cell division and intracellular transport.,miscellaneous:Expression is significantly down-regulated in hepatocellular carcinoma (HCC) patients.,similarity:Belongs to the GAMAD family.,tissue specificity:High expression in heart, brain, placenta, skeletal muscle, prostate and small intestine; moderate in kidney, pancreas, spleen, testis, ovary and colon; low in lung, liver, thymus and leukocyte.,

**Function :** function:May be involved in assembly and motor function of dynein, which plays a central role in cell division and intracellular transport.,miscellaneous:Expression is significantly down-regulated in hepatocellular carcinoma (HCC) patients.,similarity:Belongs to the GAMAD family.,tissue specificity:High expression in heart, brain, placenta, skeletal muscle, prostate and small intestine; moderate in kidney, pancreas, spleen, testis, ovary and colon; low in lung, liver, thymus and leukocyte.,

**Subcellular Location :** Cytoplasm, cytoskeleton.

**Expression :** High expression in heart, brain, placenta, skeletal muscle, prostate and small intestine; moderate in kidney, pancreas, spleen, testis, ovary and colon; low in lung, liver, thymus and leukocyte.

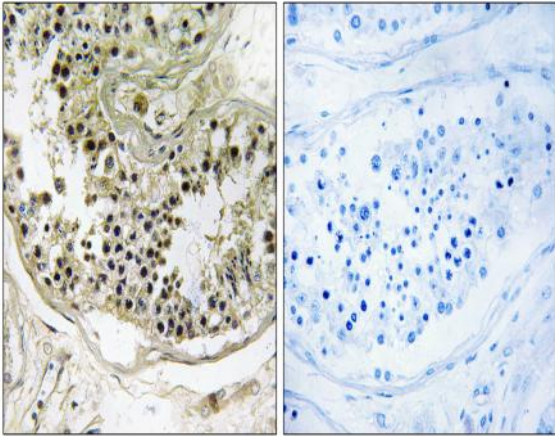
**Sort :** 5333

**No4 :** 1

**Host :** Rabbit

**Modifications :** Unmodified

## Products Images



Immunohistochemistry analysis of paraffin-embedded human testis tissue, using DYNLRB2 Antibody. The picture on the right is blocked with the synthesized peptide.