

DUS2L Polyclonal Antibody

Catalog No :	YT1422
Reactivity :	Human;Mouse
Applications :	WB;IHC;IF;ELISA
Target :	DUS2L
Gene Name :	DUS2L
Protein Name :	tRNA-dihydrouridine(20) synthase [NAD(P) ⁺]-like
Human Gene Id :	54920
Human Swiss Prot No :	Q9NX74
Mouse Gene Id :	66369
Mouse Swiss Prot No :	Q9D7B1
Immunogen :	The antiserum was produced against synthesized peptide derived from human DUS2L. AA range:421-470
Specificity :	DUS2L Polyclonal Antibody detects endogenous levels of DUS2L protein.
Formulation :	Liquid in PBS containing 50% glycerol, 0.5% BSA and 0.02% sodium azide.
Source :	Polyclonal, Rabbit,IgG
Dilution :	WB 1:500 - 1:2000. IHC 1:100 - 1:300. ELISA: 1:20000.. IF 1:50-200
Purification :	The antibody was affinity-purified from rabbit antiserum by affinity-chromatography using epitope-specific immunogen.
Concentration :	1 mg/ml
Storage Stability :	-15°C to -25°C/1 year(Do not lower than -25°C)

Observed Band : 55kD

Background : dihydrouridine synthase 2(DUS2) Homo sapiens This gene encodes a cytoplasmic protein that catalyzes the conversion of uridine residues to dihydrouridine in the D-loop of tRNA. The resulting modified bases confer enhanced regional flexibility to tRNA. The encoded protein may increase the rate of translation by inhibiting an interferon-induced protein kinase. This gene has been implicated in pulmonary carcinogenesis. Alternatively spliced transcript variants have been described for this gene. [provided by RefSeq, Nov 2012],

Function : cofactor:FAD.,function:Dihydrouridine synthase. Catalyzes the synthesis of dihydrouridine, a modified base found in the D-loop of most tRNAs.,similarity:Belongs to the dus family. Dus2 subfamily.,similarity:Contains 1 DRBM (double-stranded RNA-binding) domain.,subcellular location:Mainly at the endoplasmic reticulum.,subunit:Interacts with EPRS.,tissue specificity:Weak expression in heart, placenta and skeletal muscle. Up-regulated in most lung cancer cells (at protein level).,

Subcellular Location : Cytoplasm . Endoplasmic reticulum . Mainly at the endoplasmic reticulum. .

Expression : Weak expression in heart, placenta and skeletal muscle. Up-regulated in most lung cancer cells (at protein level).

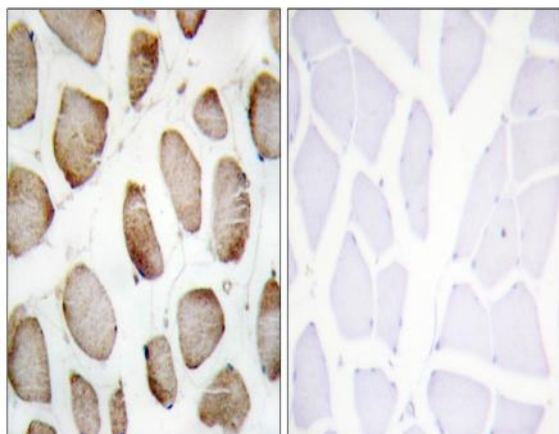
Sort : 5286

No4 : 1

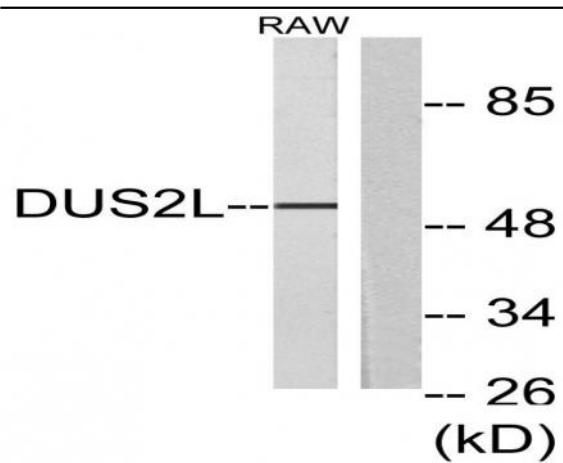
Host : Rabbit

Modifications : Unmodified

Products Images



Immunohistochemistry analysis of paraffin-embedded human skeletal muscle tissue, using DUS2L Antibody. The picture on the right is blocked with the synthesized peptide.



Western blot analysis of lysates from RAW264.7 cells, using DUS2L Antibody. The lane on the right is blocked with the synthesized peptide.