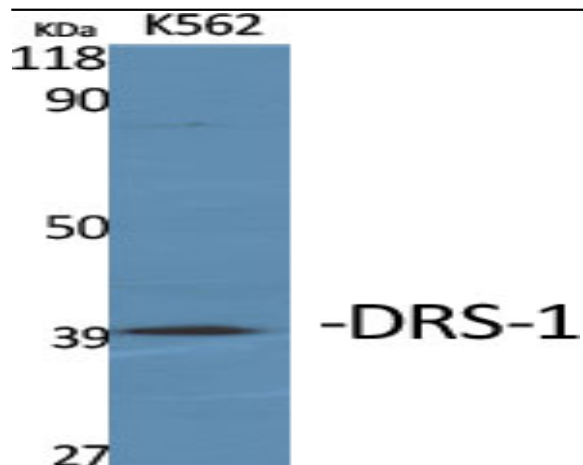


DRS-1 Polyclonal Antibody

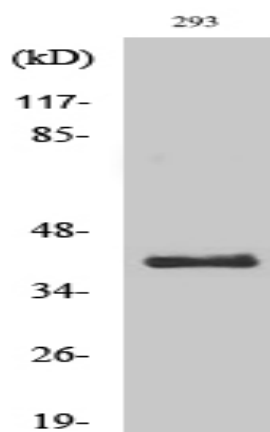
Catalog No :	YT1415
Reactivity :	Human;Rat;Mouse;
Applications :	WB;IHC;IF;ELISA
Target :	DRS-1
Fields :	>>Fatty acid degradation;>>Peroxisome
Gene Name :	ECI2
Protein Name :	Enoyl-CoA delta isomerase 2 mitochondrial
Human Gene Id :	10455
Human Swiss Prot No :	O75521
Mouse Swiss Prot No :	Q9WUR2
Immunogen :	The antiserum was produced against synthesized peptide derived from human PECl. AA range:73-122
Specificity :	DRS-1 Polyclonal Antibody detects endogenous levels of DRS-1 protein.
Formulation :	Liquid in PBS containing 50% glycerol, 0.5% BSA and 0.02% sodium azide.
Source :	Polyclonal, Rabbit,IgG
Dilution :	WB 1:500 - 1:2000. IHC 1:100 - 1:300. ELISA: 1:20000.. IF 1:50-200
Purification :	The antibody was affinity-purified from rabbit antiserum by affinity-chromatography using epitope-specific immunogen.
Concentration :	1 mg/ml
Storage Stability :	-15°C to -25°C/1 year(Do not lower than -25°C)

Observed Band :	40kD
Cell Pathway :	Fatty acid metabolism;
Background :	This gene encodes a member of the hydratase/isomerase superfamily. The protein encoded is a key mitochondrial enzyme involved in beta-oxidation of unsaturated fatty acids. It catalyzes the transformation of 3-cis and 3-trans-enoyl-CoA esters arising during the stepwise degradation of cis-, mono-, and polyunsaturated fatty acids to the 2-trans-enoyl-CoA intermediates. Alternatively spliced transcript variants have been described. [provided by RefSeq, Aug 2011],
Function :	catalytic activity:(3Z)-dodec-3-enoyl-CoA = (2E)-dodec-2-enoyl-CoA.,function:Able to isomerize both 3-cis and 3-trans double bonds into the 2-trans form in a range of enoyl-CoA species.,similarity:Contains 1 ACB (acyl-CoA-binding) domain.,similarity:In the C-terminal section; belongs to the enoyl-CoA hydratase/isomerase family.,tissue specificity:Abundant in heart, skeletal muscle and liver.,
Subcellular Location :	[Isoform 1]: Mitochondrion .; [Isoform 2]: Peroxisome matrix .
Expression :	Abundant in heart, skeletal muscle and liver. Expressed in CD34(+) T-cells and CD34(+) bone marrow cells.
Sort :	5267
No4 :	1
Host :	Rabbit
Modifications :	Unmodified

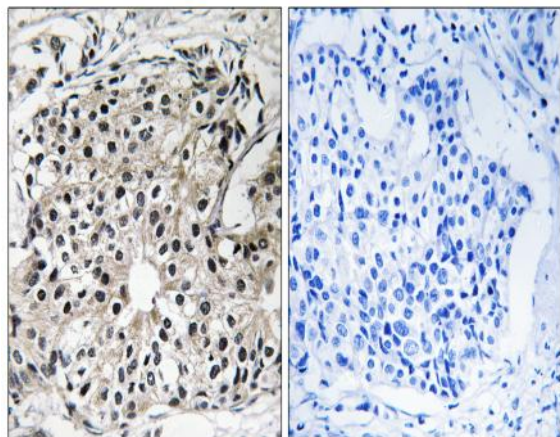
Products Images



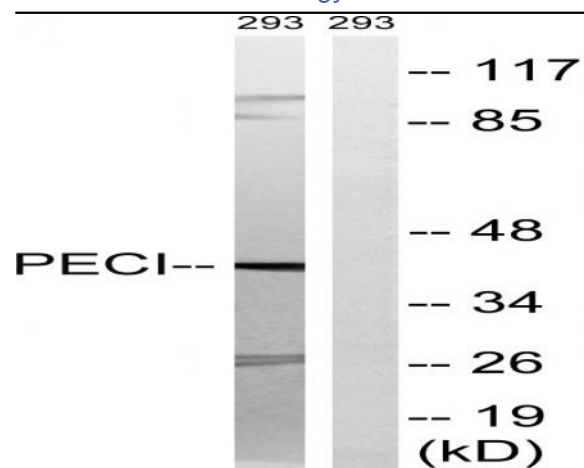
Western Blot analysis of various cells using DRS-1 Polyclonal Antibody



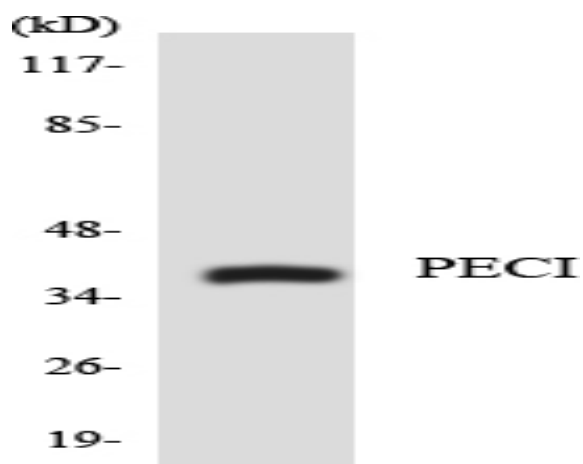
Western Blot analysis of 293 cells using DRS-1 Polyclonal Antibody



Immunohistochemistry analysis of paraffin-embedded human breast carcinoma tissue, using PECl Antibody. The picture on the right is blocked with the synthesized peptide.



Western blot analysis of lysates from 293 cells, using PECl Antibody. The lane on the right is blocked with the synthesized peptide.



Western blot analysis of the lysates from COLO205 cells using PECl antibody.