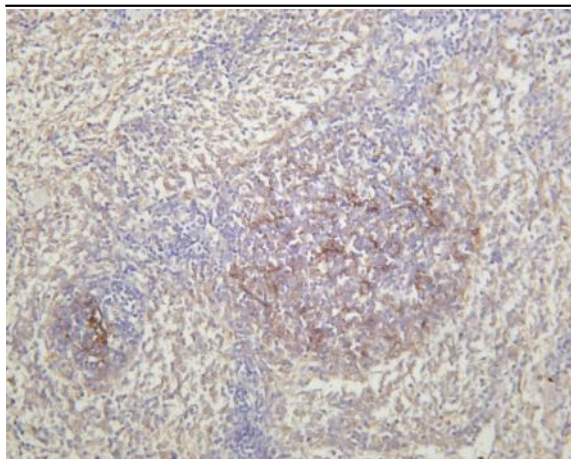


CD21 (PT0441R) PT® Rabbit mAb

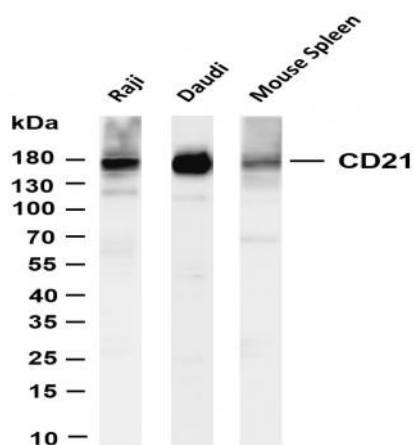
Catalog No :	YM8280
Reactivity :	Human; Mouse; Rat;
Applications :	WB;IHC;IF;IP;ELISA
Target :	CD21
Fields :	>>Complement and coagulation cascades;>>Hematopoietic cell lineage;>>B cell receptor signaling pathway;>>Epstein-Barr virus infection
Gene Name :	CR2
Protein Name :	Complement receptor type 2
Human Gene Id :	1380
Human Swiss Prot No :	P20023
Mouse Swiss Prot No :	P19070
Specificity :	endogenous
Formulation :	PBS, 50% glycerol, 0.05% Proclin 300, 0.05%BSA
Source :	Monoclonal, rabbit, IgG, Kappa
Dilution :	IHC 1:1000-1:4000;WB 1:1000-1:5000;IF 1:200-1:1000;ELISA 1:5000-1:20000;IP 1:50-1:200;
Purification :	Protein A
Storage Stability :	-15°C to -25°C/1 year(Do not lower than -25°C)
Molecularweight :	113kD
Observed Band :	155kD

Cell Pathway :	Complement and coagulation cascades;Hematopoietic cell lineage;B_Cell_Antigen;
Background :	This gene encodes a membrane protein, which functions as a receptor for Epstein-Barr virus (EBV) binding on B and T lymphocytes. Genetic variations in this gene are associated with susceptibility to systemic lupus erythematosus type 9 (SLEB9). Alternatively spliced transcript variants encoding different isoforms have been found for this gene.[provided by RefSeq, Sep 2009],
Function :	disease:Genetic variations in CR2 are associated with susceptibility to systemic lupus erythematosus type 9 (SLEB9) [MIM:610927]. Systemic lupus erythematosus (SLE) is a chronic autoimmune disease with a complex genetic basis. SLE is an inflammatory, and often febrile multisystemic disorder of connective tissue characterized principally by involvement of the skin, joints, kidneys, and serosal membranes. It is thought to represent a failure of the regulatory mechanisms of the autoimmune system.,function:Receptor for complement C3Dd, for the Epstein-Barr virus on human B-cells and T-cells and for HNRPU. Participates in B lymphocytes activation.,similarity:Belongs to the receptors of complement activation (RCA) family.,similarity:Contains 15 Sushi (CCP/SCR) domains.,tissue specificity:Mature B-lymphocytes, T-lymphocytes, pharyngeal epithelial cells, astrocytes and follicular dendritic cells
Subcellular Location :	Membrane
Expression :	Mature B-lymphocytes, T-lymphocytes, pharyngeal epithelial cells, astrocytes and follicular dendritic cells of the spleen.
Tag :	hot,recombinant
Sort :	3463
No4 :	1
Host :	Rabbit
Modifications :	Unmodified

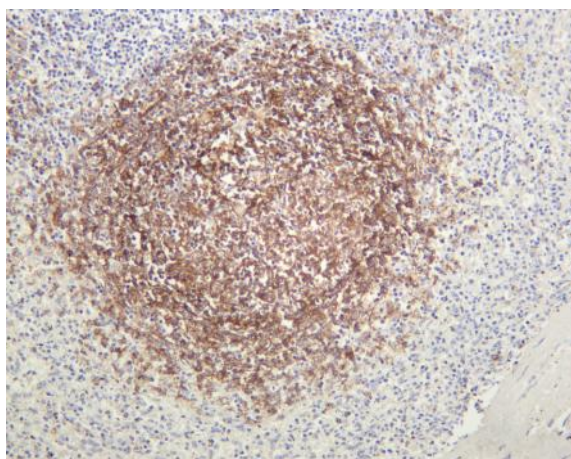
Products Images



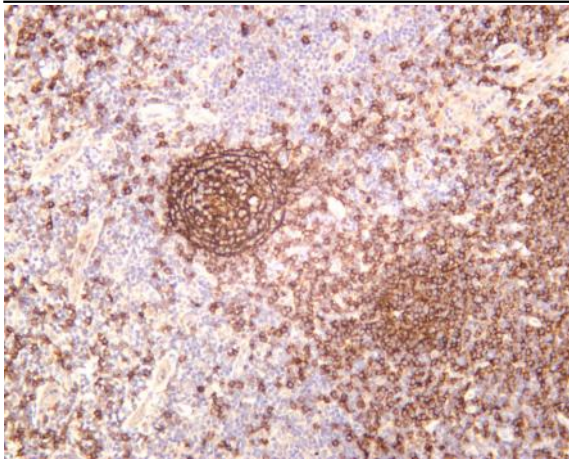
Rat spleen was stained with anti-CD21 (PT0441R) rabbit antibody



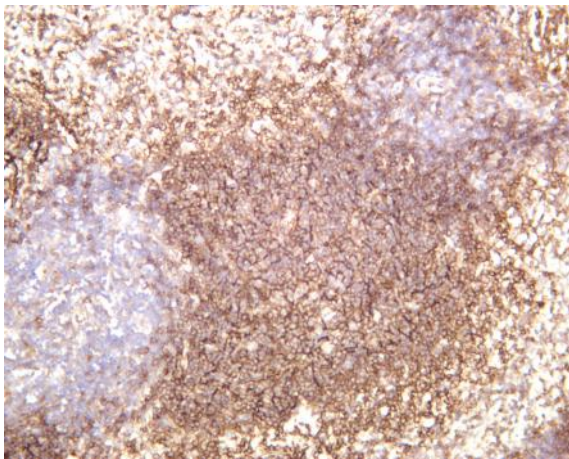
Various whole cell lysates were separated by 4-20% SDS-PAGE, and the membrane was blotted with anti-CD21 (PT0441R) antibody. The HRP-conjugated Goat anti-Rabbit IgG(H + L) antibody was used to detect the antibody. Lane 1: Raji Lane 2: Daudi Lane 3: Mouse Spleen Predicted band size: 113kDa Observed band size: 155kDa



Human spleen was stained with anti-CD21 (PT0441R) rabbit antibody



Human tonsil was stained with anti-CD21 (PT0441R) rabbit antibody



Mouse spleen was stained with anti-CD21 (PT0441R) rabbit antibody