

## CSP Polyclonal Antibody

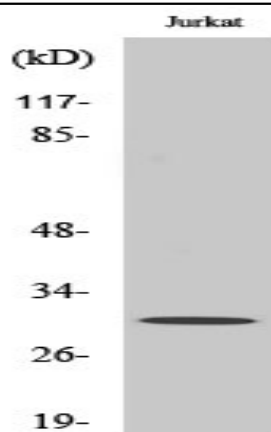
<b>Catalog No :</b>	YT1135
<b>Reactivity :</b>	Human;Mouse;Rat
<b>Applications :</b>	WB;ELISA
<b>Target :</b>	CSP
<b>Fields :</b>	>>Protein processing in endoplasmic reticulum
<b>Gene Name :</b>	DNAJC5
<b>Protein Name :</b>	DnaJ homolog subfamily C member 5
<b>Human Gene Id :</b>	80331
<b>Human Swiss Prot No :</b>	Q9H3Z4
<b>Mouse Gene Id :</b>	13002
<b>Mouse Swiss Prot No :</b>	P60904
<b>Rat Gene Id :</b>	79130
<b>Rat Swiss Prot No :</b>	P60905
<b>Immunogen :</b>	The antiserum was produced against synthesized peptide derived from human DNAJC5. AA range:131-180
<b>Specificity :</b>	CSP Polyclonal Antibody detects endogenous levels of CSP protein.
<b>Formulation :</b>	Liquid in PBS containing 50% glycerol, 0.5% BSA and 0.02% sodium azide.
<b>Source :</b>	Polyclonal, Rabbit,IgG
<b>Dilution :</b>	WB 1:500 - 1:2000. ELISA: 1:10000. Not yet tested in other applications.

---

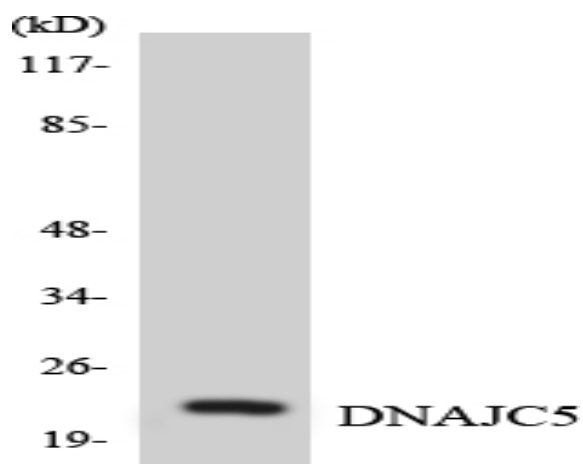
<b>Purification :</b>	The antibody was affinity-purified from rabbit antiserum by affinity-chromatography using epitope-specific immunogen.
<b>Concentration :</b>	1 mg/ml
<b>Storage Stability :</b>	-15°C to -25°C/1 year(Do not lower than -25°C)
<b>Observed Band :</b>	30kD
<b>Background :</b>	This gene is a member of the J protein family. J proteins function in many cellular processes by regulating the ATPase activity of 70 kDa heat shock proteins. The encoded protein plays a role in membrane trafficking and protein folding, and has been shown to have anti-neurodegenerative properties. The encoded protein is known to play a role in cystic fibrosis and Huntington's disease. A pseudogene of this gene is located on the short arm of chromosome 8. [provided by RefSeq, Nov 2010],
<b>Function :</b>	function:May have an important role in presynaptic function. May be involved in calcium-dependent neurotransmitter release at nerve endings.,PTM:Fatty acylated. Heavily palmitoylated in the cysteine string motif.,similarity:Contains 1 J domain.,subcellular location:Identified by mass spectrometry in melanosome fractions from stage I to stage IV.,tissue specificity:Expressed in pancreas, kidney, skeletal muscle, liver, lung, placenta, brain and heart.,
<b>Subcellular Location :</b>	Cytoplasm, cytosol . Membrane ; Lipid-anchor . Cytoplasmic vesicle, secretory vesicle, chromaffin granule membrane . Melanosome . Cell membrane . The association with membranes is regulated by palmitoylation (By similarity). Identified by mass spectrometry in melanosome fractions from stage I to stage IV (PubMed:17081065). .
<b>Expression :</b>	Expressed in pancreas, kidney, skeletal muscle, liver, lung, placenta, brain and heart.
<b>Sort :</b>	4622
<b>No4 :</b>	1
<b>Host :</b>	Rabbit
<b>Modifications :</b>	Unmodified

---

**Products Images**



Western Blot analysis of various cells using CSP Polyclonal Antibody diluted at 1:2000



Western blot analysis of the lysates from HeLa cells using DNAJC5 antibody.