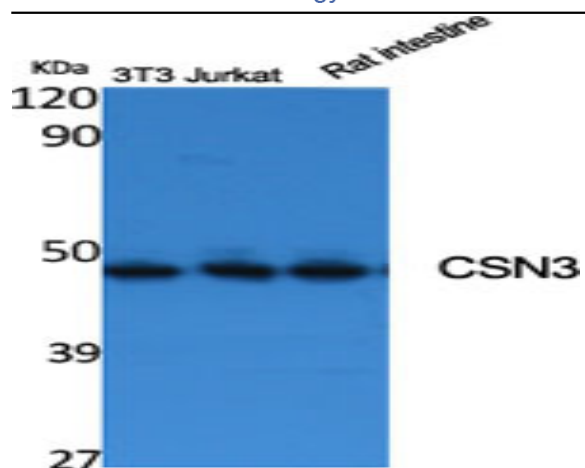


CSN3 Polyclonal Antibody

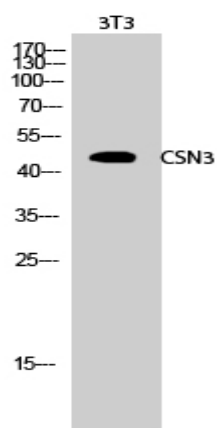
Catalog No :	YT1134
Reactivity :	Human;Mouse;Rat
Applications :	WB;IHC;IF;ELISA
Target :	CSN3
Gene Name :	COPS3
Protein Name :	COP9 signalosome complex subunit 3
Human Gene Id :	8533
Human Swiss Prot No :	Q9UNS2
Mouse Gene Id :	26572
Mouse Swiss Prot No :	O88543
Rat Gene Id :	287367
Rat Swiss Prot No :	Q68FW9
Immunogen :	The antiserum was produced against synthesized peptide derived from human JAB1. AA range:374-423
Specificity :	CSN3 Polyclonal Antibody detects endogenous levels of CSN3 protein.
Formulation :	Liquid in PBS containing 50% glycerol, 0.5% BSA and 0.02% sodium azide.
Source :	Polyclonal, Rabbit,IgG
Dilution :	WB 1:500 - 1:2000. IHC 1:100 - 1:300. IF 1:200 - 1:1000. ELISA: 1:10000. Not yet tested in other applications.
Purification :	The antibody was affinity-purified from rabbit antiserum by affinity-chromatography using epitope-specific immunogen.

Concentration :	1 mg/ml
Storage Stability :	-15°C to -25°C/1 year(Do not lower than -25°C)
Observed Band :	47kD
Background :	<p>The protein encoded by this gene possesses kinase activity that phosphorylates regulators involved in signal transduction. It phosphorylates I kappa-Balpa, p105, and c-Jun. It acts as a docking site for complex-mediated phosphorylation. The gene is located within the Smith-Magenis syndrome region on chromosome 17. Several transcript variants encoding different isoforms have been found for this gene. [provided by RefSeq, Oct 2015],</p>
Function :	<p>function:Component of the COP9 signalosome complex (CSN), a complex involved in various cellular and developmental processes. The CSN complex is an essential regulator of the ubiquitin (Ubl) conjugation pathway by mediating the deneddylation of the cullin subunits of SCF-type E3 ligase complexes, leading to decrease the Ubl ligase activity of SCF-type complexes such as SCF, CSA or DDB2. The complex is also involved in phosphorylation of p53/TP53, c-jun/JUN, I kappa Balpa/NFKBIA, ITPK1 and IRF8/ICSBP, possibly via its association with CK2 and PKD kinases. CSN-dependent phosphorylation of TP53 and JUN promotes and protects degradation by the Ubl system, respectively.,miscellaneous:Amplified and overexpressed in some osteosarcomas (OS), suggesting that it may participate in TP53 degradation in OS.,PTM:Phosphorylated upon DNA damage, probably by ATM or ATR.,similarity:Belongs to the CSN3 fami</p>
Subcellular Location :	Cytoplasm . Nucleus .
Expression :	Widely expressed. Expressed at high level in heart and skeletal muscle.
Sort :	788
No4 :	1
Host :	Rabbit
Modifications :	Unmodified

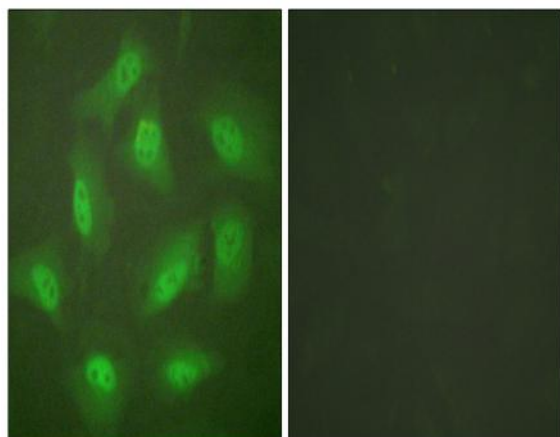
Products Images



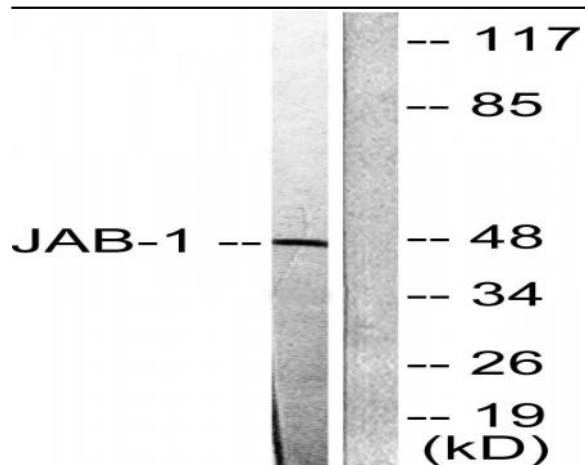
Western Blot analysis of various cells using CSN3 Polyclonal Antibody



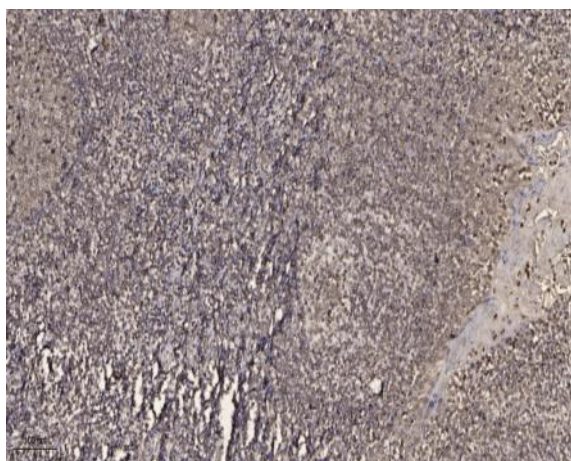
Western Blot analysis of 3T3 cells using CSN3 Polyclonal Antibody



Immunofluorescence analysis of HeLa cells, using JAB1 Antibody. The picture on the right is blocked with the synthesized peptide.



Western blot analysis of lysates from LOVO cells, using JAB1 Antibody. The lane on the right is blocked with the synthesized peptide.



Immunohistochemical analysis of paraffin-embedded human tonsil. 1, Antibody was diluted at 1:200(4° overnight). 2, Tris-EDTA,pH9.0 was used for antigen retrieval. 3,Secondary antibody was diluted at 1:200(room temperature, 45min).