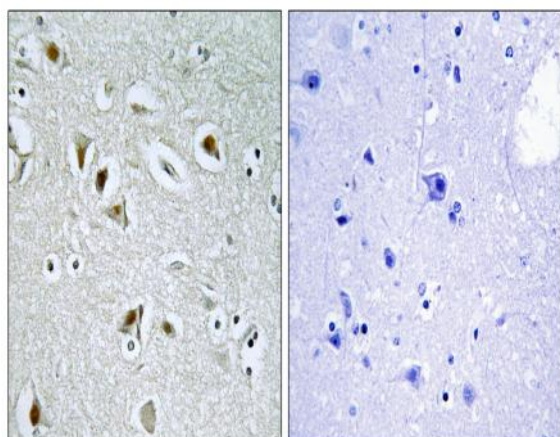


DOC-1R Polyclonal Antibody

Catalog No :	YT1390
Reactivity :	Human;Mouse
Applications :	IHC;IF;ELISA
Target :	DOC-1R
Gene Name :	CDK2AP2
Protein Name :	Cyclin-dependent kinase 2-associated protein 2
Human Gene Id :	10263
Human Swiss Prot No :	O75956
Mouse Gene Id :	52004
Mouse Swiss Prot No :	Q9CPY4
Immunogen :	The antiserum was produced against synthesized peptide derived from human CDKA2. AA range:51-100
Specificity :	DOC-1R Polyclonal Antibody detects endogenous levels of DOC-1R protein.
Formulation :	Liquid in PBS containing 50% glycerol, 0.5% BSA and 0.02% sodium azide.
Source :	Polyclonal, Rabbit,IgG
Dilution :	IHC 1:100 - 1:300. ELISA: 1:5000.. IF 1:50-200
Purification :	The antibody was affinity-purified from rabbit antiserum by affinity-chromatography using epitope-specific immunogen.
Concentration :	1 mg/ml
Storage Stability :	-15°C to -25°C/1 year(Do not lower than -25°C)

Molecularweight :	13kD
Background :	cyclin dependent kinase 2 associated protein 2(CDK2AP2) Homo sapiens This gene encodes a protein that interacts with cyclin-dependent kinase 2 associated protein 1. Pseudogenes associated with this gene are located on chromosomes 7 and 9. Alternatively spliced transcript variants have been observed for this gene. [provided by RefSeq, Dec 2012],
Function :	similarity:Belongs to the CDK2AP family.,tissue specificity:Ubiquitous.,
Subcellular Location :	Cytoplasm . Nucleus . Accumulates in immature oocytes in the nucleus. During the first meiotic division, accumulates in the cytoplasm and localizes in dots in the vicinity of the chromosomes in a region enriched in microtubules. .
Expression :	Ubiquitous.
Sort :	5210
No4 :	1
Host :	Rabbit
Modifications :	Unmodified

Products Images



Immunohistochemistry analysis of paraffin-embedded human brain tissue, using CDKA2 Antibody. The picture on the right is blocked with the synthesized peptide.