

CRMP-3 Polyclonal Antibody

Catalog No :	YT1117
Reactivity :	Human;Mouse;Rat
Applications :	WB;ELISA
Target :	CRMP-3
Gene Name :	DPYSL4
Protein Name :	Dihydropyrimidinase-related protein 4
Human Gene Id :	10570
Human Swiss Prot No :	O14531
Mouse Swiss Prot No :	O35098
Rat Gene Id :	25417
Rat Swiss Prot No :	Q62951
Immunogen :	The antiserum was produced against synthesized peptide derived from human DPYSL4. AA range:91-140
Specificity :	CRMP-3 Polyclonal Antibody detects endogenous levels of CRMP-3 protein.
Formulation :	Liquid in PBS containing 50% glycerol, 0.5% BSA and 0.02% sodium azide.
Source :	Polyclonal, Rabbit,IgG
Dilution :	WB 1:500 - 1:2000. ELISA: 1:10000. Not yet tested in other applications.
Purification :	The antibody was affinity-purified from rabbit antiserum by affinity-chromatography using epitope-specific immunogen.
Concentration :	1 mg/ml

Storage Stability : -15°C to -25°C/1 year(Do not lower than -25°C)

Observed Band : 62kD

Background : disease:Antibodies against post-translationally modified DPYSL4, also called anti-CV2 autoantibodies, are present in sera from patients with paraneoplastic neurological diseases (PND). PND are disorders of the nervous system associated with various systemic cancers which are not a direct result of the tumor mass or metastasis, but attributed to remote effects of the cancer.,function:Necessary for signaling by class 3 semaphorins and subsequent remodeling of the cytoskeleton. Plays a role in axon guidance, neuronal growth cone collapse and cell migration.,PTM:Phosphorylated upon DNA damage, probably by ATM or ATR.,similarity:Belongs to the DHOase family. Hydantoinase/dihydropyrimidinase subfamily.,subunit:Homotetramer, and heterotetramer with CRMP1, DPYSL2, DPYSL3 or DPYSL5. Interacts with PLEXA1.,

Function : disease:Antibodies against post-translationally modified DPYSL4, also called anti-CV2 autoantibodies, are present in sera from patients with paraneoplastic neurological diseases (PND). PND are disorders of the nervous system associated with various systemic cancers which are not a direct result of the tumor mass or metastasis, but attributed to remote effects of the cancer.,function:Necessary for signaling by class 3 semaphorins and subsequent remodeling of the cytoskeleton. Plays a role in axon guidance, neuronal growth cone collapse and cell migration.,PTM:Phosphorylated upon DNA damage, probably by ATM or ATR.,similarity:Belongs to the DHOase family. Hydantoinase/dihydropyrimidinase subfamily.,subunit:Homotetramer, and heterotetramer with CRMP1, DPYSL2, DPYSL3 or DPYSL5. Interacts with PLEXA1.,

Subcellular Location : Cytoplasm .

Expression : Brain,Fetal brain,Retina,

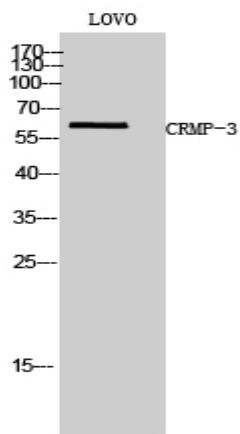
Sort : 4587

No4 : 1

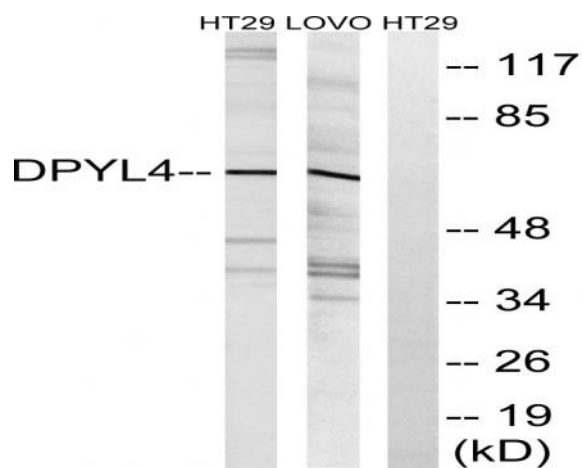
Host : Rabbit

Modifications : Unmodified

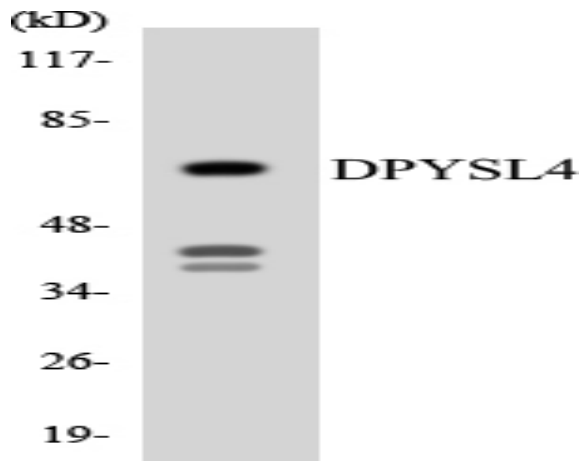
Products Images



Western Blot analysis of LOVO cells using CRMP-3 Polyclonal Antibody



Western blot analysis of lysates from LOVO and HT-29 cells, using DPYSL4 Antibody. The lane on the right is blocked with the synthesized peptide.



Western blot analysis of the lysates from RAW264.7 cells using DPYSL4 antibody.