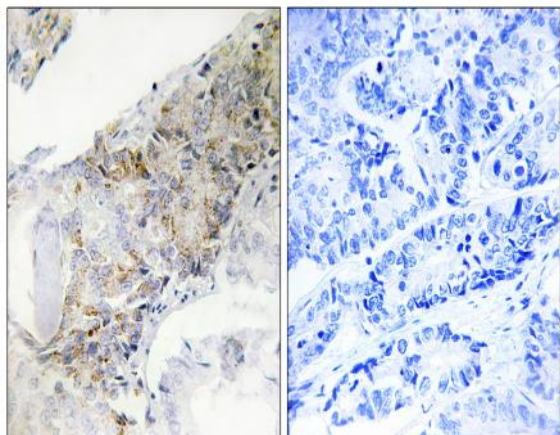


## COX5b Polyclonal Antibody

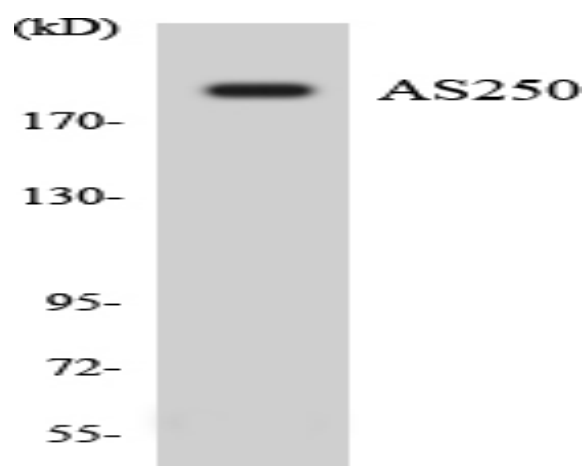
<b>Catalog No :</b>	YT1077
<b>Reactivity :</b>	Human;Mouse;Rat
<b>Applications :</b>	IHC;IF;ELISA
<b>Target :</b>	COX5b
<b>Fields :</b>	>>Oxidative phosphorylation;>>Metabolic pathways;>>Cardiac muscle contraction;>>Thermogenesis;>>Non-alcoholic fatty liver disease;>>Alzheimer disease;>>Parkinson disease;>>Amyotrophic lateral sclerosis;>>Huntington disease;>>Prion disease;>>Pathways of neurodegeneration - multiple diseases;>>Chemical carcinogenesis - reactive oxygen species;>>Diabetic cardiomyopathy
<b>Gene Name :</b>	COX5B
<b>Protein Name :</b>	Cytochrome c oxidase subunit 5B mitochondrial
<b>Human Gene Id :</b>	1329
<b>Human Swiss Prot No :</b>	P10606
<b>Mouse Swiss Prot No :</b>	P19536
<b>Rat Gene Id :</b>	94194
<b>Rat Swiss Prot No :</b>	P12075
<b>Immunogen :</b>	The antiserum was produced against synthesized peptide derived from human COX5B. AA range:11-60
<b>Specificity :</b>	COX5b Polyclonal Antibody detects endogenous levels of COX5b protein.
<b>Formulation :</b>	Liquid in PBS containing 50% glycerol, 0.5% BSA and 0.02% sodium azide.
<b>Source :</b>	Polyclonal, Rabbit,IgG

<b>Dilution :</b>	IHC 1:100 - 1:300. ELISA: 1:20000.. IF 1:50-200
<b>Purification :</b>	The antibody was affinity-purified from rabbit antiserum by affinity-chromatography using epitope-specific immunogen.
<b>Concentration :</b>	1 mg/ml
<b>Storage Stability :</b>	-15°C to -25°C/1 year(Do not lower than -25°C)
<b>Molecularweight :</b>	14kD
<b>Cell Pathway :</b>	Oxidative phosphorylation;Cardiac muscle contraction;Alzheimer's disease;Parkinson's disease;Huntington's disease;
<b>Background :</b>	Cytochrome C oxidase (COX) is the terminal enzyme of the mitochondrial respiratory chain. It is a multi-subunit enzyme complex that couples the transfer of electrons from cytochrome c to molecular oxygen and contributes to a proton electrochemical gradient across the inner mitochondrial membrane. The complex consists of 13 mitochondrial- and nuclear-encoded subunits. The mitochondrially-encoded subunits perform the electron transfer and proton pumping activities. The functions of the nuclear-encoded subunits are unknown but they may play a role in the regulation and assembly of the complex. This gene encodes the nuclear-encoded subunit Vb of the human mitochondrial respiratory chain enzyme. [provided by RefSeq, Jul 2008],
<b>Function :</b>	function:This protein is one of the nuclear-coded polypeptide chains of cytochrome c oxidase, the terminal oxidase in mitochondrial electron transport.,similarity:Belongs to the cytochrome c oxidase subunit 5B family.,
<b>Subcellular Location :</b>	Mitochondrion inner membrane ; Peripheral membrane protein ; Matrix side .
<b>Expression :</b>	Liver,Skin,
<b>Sort :</b>	4489
<b>No4 :</b>	1
<b>Host :</b>	Rabbit
<b>Modifications :</b>	Unmodified

**Products Images**



Immunohistochemistry analysis of paraffin-embedded human breast carcinoma tissue, using COX5B Antibody. The picture on the right is blocked with the synthesized peptide.



Western blot analysis of the lysates from HUVEC cells using AS250 antibody.