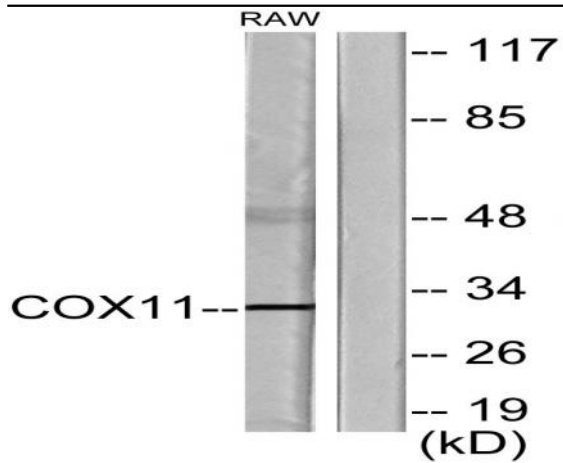


COX11 Polyclonal Antibody

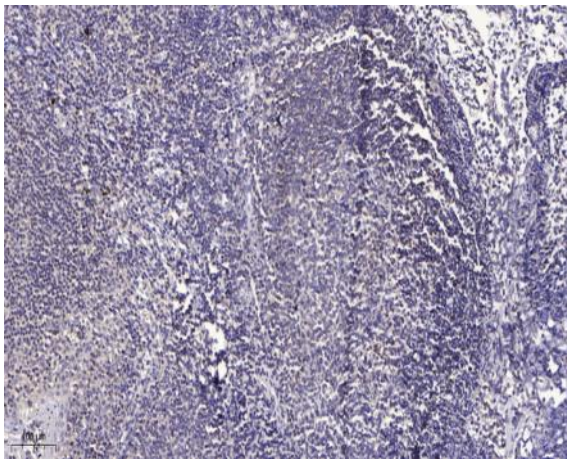
Catalog No :	YT1069
Reactivity :	Human;Mouse
Applications :	WB;IHC;IF;ELISA
Target :	COX11
Fields :	>>Oxidative phosphorylation;>>Metabolic pathways;>>Thermogenesis
Gene Name :	COX11
Protein Name :	Cytochrome c oxidase assembly protein COX11 mitochondrial
Human Gene Id :	1353
Human Swiss Prot No :	Q9Y6N1
Mouse Gene Id :	69802
Mouse Swiss Prot No :	Q6P8I6
Immunogen :	The antiserum was produced against synthesized peptide derived from human COX11. AA range:51-100
Specificity :	COX11 Polyclonal Antibody detects endogenous levels of COX11 protein.
Formulation :	Liquid in PBS containing 50% glycerol, 0.5% BSA and 0.02% sodium azide.
Source :	Polyclonal, Rabbit,IgG
Dilution :	WB 1:500 - 1:2000. IHC 1:100 - 1:300. IF 1:200 - 1:1000. ELISA: 1:5000. Not yet tested in other applications.
Purification :	The antibody was affinity-purified from rabbit antiserum by affinity-chromatography using epitope-specific immunogen.
Concentration :	1 mg/ml

Storage Stability :	-15°C to -25°C/1 year(Do not lower than -25°C)
Observed Band :	31kD
Cell Pathway :	Oxidative phosphorylation;
Background :	<p>Cytochrome c oxidase (COX), the terminal component of the mitochondrial respiratory chain, catalyzes the electron transfer from reduced cytochrome c to oxygen. This component is a heteromeric complex consisting of 3 catalytic subunits encoded by mitochondrial genes and multiple structural subunits encoded by nuclear genes. The mitochondrially-encoded subunits function in electron transfer, and the nuclear-encoded subunits may function in the regulation and assembly of the complex. This nuclear gene encodes a protein which is not a structural subunit, but may be a heme A biosynthetic enzyme involved in COX formation, according to the yeast mutant studies. However, the studies in <i>Rhodobacter sphaeroides</i> suggest that this gene is not required for heme A biosynthesis, but required for stable formation of the Cu(B) and magnesium centers of COX. This human protein is predicted to c</p>
Function :	<p>function:Exerts its effect at some terminal stage of cytochrome c oxidase synthesis, probably by being involved in the insertion of the copper B into subunit I.,similarity:Belongs to the COX11/ctaG family.,subunit:Interacts with CNNM4/ACDP4.,tissue specificity:Ubiquitous.,</p>
Subcellular Location :	Mitochondrion inner membrane ; Single-pass membrane protein ; Intermembrane side .
Expression :	Ubiquitous.
Sort :	4470
No4 :	1
Host :	Rabbit
Modifications :	Unmodified

Products Images



Western blot analysis of lysates from RAW264.7 cells, using COX11 Antibody. The lane on the right is blocked with the synthesized peptide.



Immunohistochemical analysis of paraffin-embedded human tonsil. 1, Antibody was diluted at 1:200(4° overnight). 2, Tris-EDTA,pH9.0 was used for antigen retrieval. 3,Secondary antibody was diluted at 1:200(room temperature, 30min).