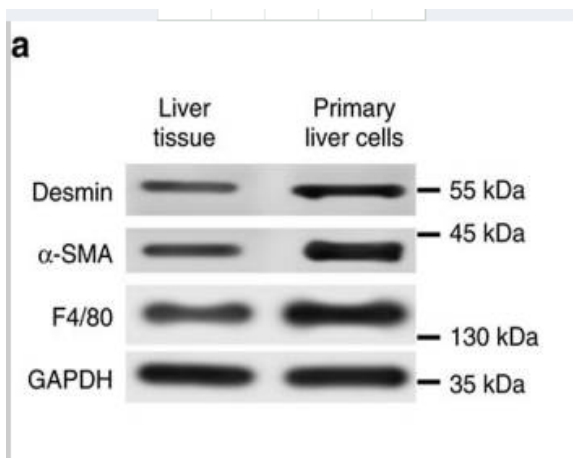


Desmin Polyclonal Antibody

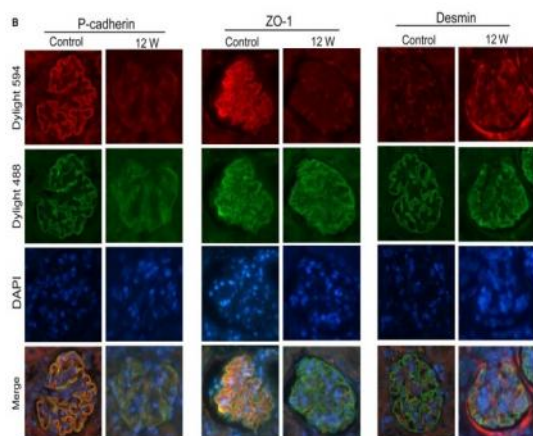
| | |
|------------------------------|--|
| Catalog No : | YT1326 |
| Reactivity : | Human;Mouse;Rat |
| Applications : | WB;IHC;IF;ELISA |
| Target : | Desmin |
| Fields : | >>Hypertrophic cardiomyopathy;>>Arrhythmogenic right ventricular cardiomyopathy;>>Dilated cardiomyopathy |
| Gene Name : | DES |
| Protein Name : | Desmin |
| Human Gene Id : | 1674 |
| Human Swiss Prot No : | P17661 |
| Mouse Gene Id : | 13346 |
| Mouse Swiss Prot No : | P31001 |
| Rat Gene Id : | 64362 |
| Rat Swiss Prot No : | P48675 |
| Immunogen : | The antiserum was produced against synthesized peptide derived from human Desmin. AA range:421-470 |
| Specificity : | Desmin Polyclonal Antibody detects endogenous levels of Desmin protein. |
| Formulation : | Liquid in PBS containing 50% glycerol, 0.5% BSA and 0.02% sodium azide. |
| Source : | Polyclonal, Rabbit,IgG |
| Dilution : | WB 1:500 - 1:2000. IHC 1:100 - 1:300. IF 1:200 - 1:1000. ELISA: 1:10000. Not yet tested in other applications. |

| | |
|-------------------------------|---|
| Purification : | The antibody was affinity-purified from rabbit antiserum by affinity-chromatography using epitope-specific immunogen. |
| Concentration : | 1 mg/ml |
| Storage Stability : | -15°C to -25°C/1 year(Do not lower than -25°C) |
| Observed Band : | 55kD |
| Cell Pathway : | Hypertrophic cardiomyopathy (HCM);Arrhythmogenic right ventricular cardiomyopathy (ARVC);Dilated cardiomyopathy; |
| Background : | This gene encodes a muscle-specific class III intermediate filament. Homopolymers of this protein form a stable intracytoplasmic filamentous network connecting myofibrils to each other and to the plasma membrane. Mutations in this gene are associated with desmin-related myopathy, a familial cardiac and skeletal myopathy (CSM), and with distal myopathies. [provided by RefSeq, Jul 2008], |
| Function : | disease:Defects in DES are the cause of cardiomyopathy dilated type 11 (CMD11) [MIM:604765]. Dilated cardiomyopathy is a disorder characterized by ventricular dilation and impaired systolic function, resulting in congestive heart failure and arrhythmia. Patients are at risk of premature death.,disease:Defects in DES are the cause of desmin-related cardio-skeletal myopathy (CSM) [MIM:601419]; also known as desmin-related myopathy (DRM). CSM is characterized by skeletal muscle weakness associated with cardiac conduction blocks, arrhythmias, restrictive heart failure, and by intracytoplasmic accumulation of desmin-reactive deposits in cardiac and skeletal muscle cells. A desmin-related myopathy can have a distal onset, it is then known as hereditary distal myopathy (HDM).,disease:Defects in DES are the cause of neurogenic scapuloperoneal syndrome Kaeser type (Kaeser syndrome) [MIM:181400]. |
| Subcellular Location : | Cytoplasmic |
| Expression : | Muscle,Skeletal muscle, |
| Tag : | orthogonal,hot |
| Sort : | 267 |
| No4 : | 1 |
| Host : | Rabbit |
| Modifications : | Unmodified |

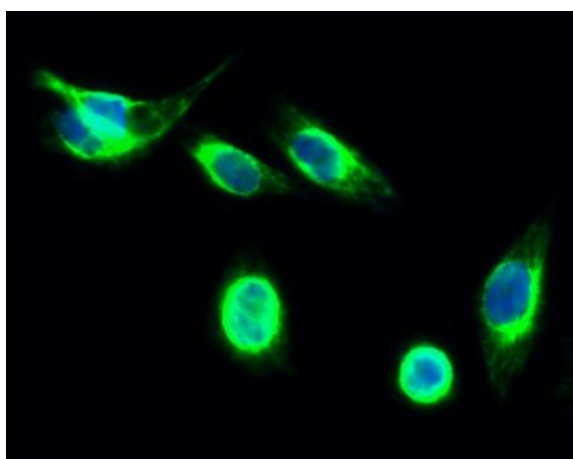
Products Images



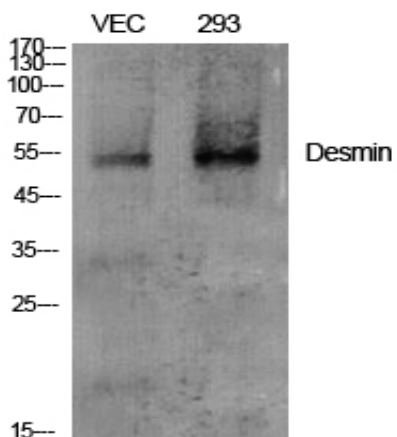
Zhang, Haiyang, et al. "Exosome-delivered EGFR regulates liver microenvironment to promote gastric cancer liver metastasis." *Nature communications* 8 (2017): 15016.



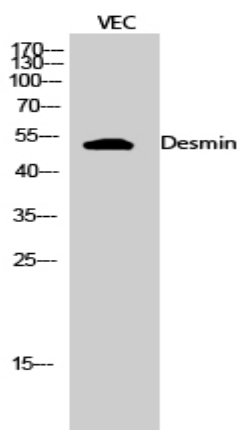
Hu, Mengsi, et al. "Lnc RNA MALAT 1 is dysregulated in diabetic nephropathy and involved in high glucose-induced podocyte injury via its interplay with β -catenin." *Journal of cellular and molecular medicine* 21.11 (2017): 2732-2747.



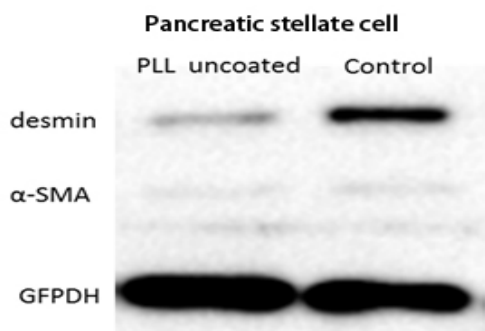
Immunofluorescence analysis of HeLa cell. 1, Desmin Polyclonal Antibody (green) was diluted at 1:200 (4° overnight). 2, Goat Anti Rabbit Alexa Fluor 488 Catalog:RS3211 was diluted at 1:1000 (room temperature, 50min). 3 DAPI (blue) 10min.



Western Blot analysis of various cells using Desmin Polyclonal Antibody diluted at 1:2000

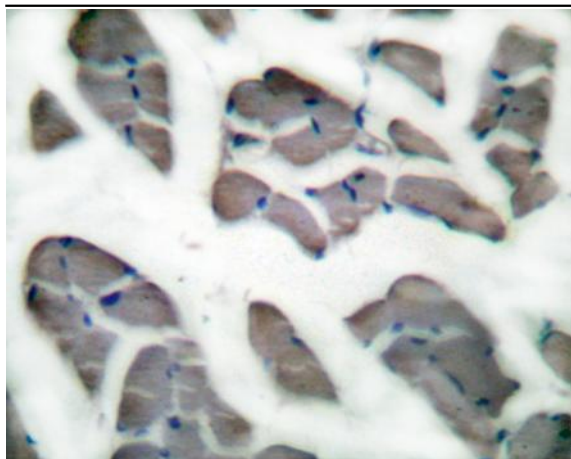


Western Blot analysis of VEC cells using Desmin Polyclonal Antibody diluted at 1:2000

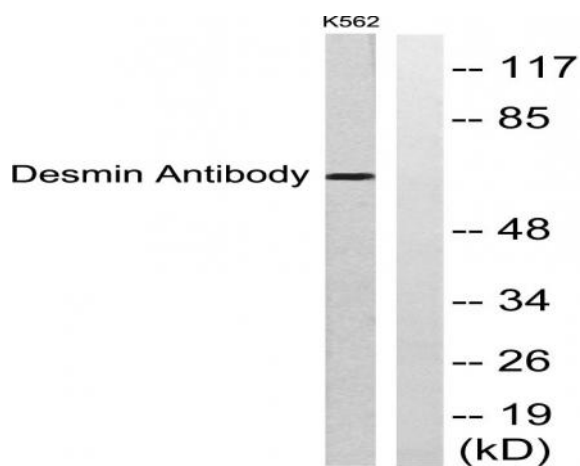


The picture was kindly provided by our customer

Union Hospital of Wuhan



Immunohistochemistry analysis of paraffin-embedded human skeletal muscle tissue, using Desmin Antibody. The picture on the right is blocked with the synthesized peptide.



Western blot analysis of lysates from K562 cells, using Desmin Antibody. The lane on the right is blocked with the synthesized peptide.