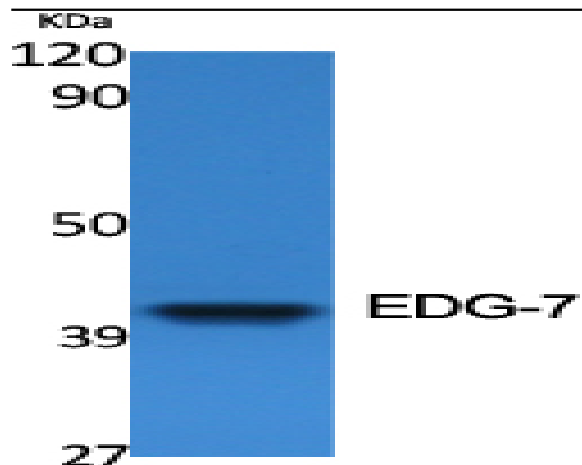


EDG-7 Polyclonal Antibody

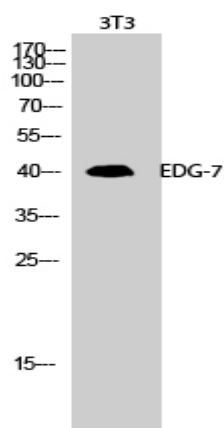
Catalog No :	YT1471
Reactivity :	Human;Rat;Mouse;
Applications :	WB;IHC;IF;ELISA
Target :	EDG-7
Fields :	>>Rap1 signaling pathway;>>Phospholipase D signaling pathway;>>Neuroactive ligand-receptor interaction;>>PI3K-Akt signaling pathway;>>Pathways in cancer
Gene Name :	LPAR3
Protein Name :	Lysophosphatidic acid receptor 3
Human Gene Id :	23566
Human Swiss Prot No :	Q9UBY5
Mouse Swiss Prot No :	Q9EQ31
Immunogen :	The antiserum was produced against synthesized peptide derived from human EDG7. AA range:281-330
Specificity :	EDG-7 Polyclonal Antibody detects endogenous levels of EDG-7 protein.
Formulation :	Liquid in PBS containing 50% glycerol, 0.5% BSA and 0.02% sodium azide.
Source :	Polyclonal, Rabbit,IgG
Dilution :	WB 1:500 - 1:2000. IHC 1:100 - 1:300. IF 1:200 - 1:1000. ELISA: 1:40000. Not yet tested in other applications.
Purification :	The antibody was affinity-purified from rabbit antiserum by affinity-chromatography using epitope-specific immunogen.
Concentration :	1 mg/ml

Storage Stability :	<u>-15 °C to -25 °C/1 year(Do not lower than -25 °C)</u>
Observed Band :	<u>47kD</u>
Cell Pathway :	<u>Neuroactive ligand-receptor interaction;</u>
Background :	<u>lysophosphatidic acid receptor 3(LPAR3) Homo sapiens This gene encodes a member of the G protein-coupled receptor family, as well as the EDG family of proteins. This protein functions as a cellular receptor for lysophosphatidic acid and mediates lysophosphatidic acid-evoked calcium mobilization. This receptor couples predominantly to G(q/11) alpha proteins. [provided by RefSeq, Jul 2008],</u>
Function :	<u>function:Receptor for lysophosphatidic acid (LPA), a mediator of diverse cellular activities. May play a role in the development of ovarian cancer. Seems to be coupled to the G(i)/G(o) and G(q) families of heteromeric G proteins.,similarity:Belongs to the G-protein coupled receptor 1 family.,tissue specificity:Most abundantly expressed in prostate, testes, pancreas, and heart, with moderate levels in lung and ovary. No detectable expression in brain, placenta, liver, skeletal muscle, kidney, spleen, thymus, small intestine, colon, or peripheral blood leukocytes.,</u>
Subcellular Location :	<u>Cell membrane; Multi-pass membrane protein.</u>
Expression :	<u>Most abundantly expressed in prostate, testes, pancreas, and heart, with moderate levels in lung and ovary. No detectable expression in brain, placenta, liver, skeletal muscle, kidney, spleen, thymus, small intestine, colon, or peripheral blood leukocytes.</u>
Tag :	<u>hot</u>
Sort :	<u>5408</u>
Host :	<u>Rabbit</u>
Modifications :	<u>Unmodified</u>

Products Images



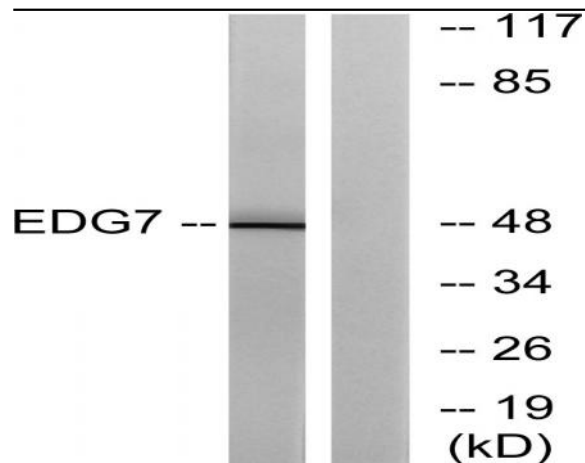
Western Blot analysis of various cells using EDG-7 Polyclonal Antibody



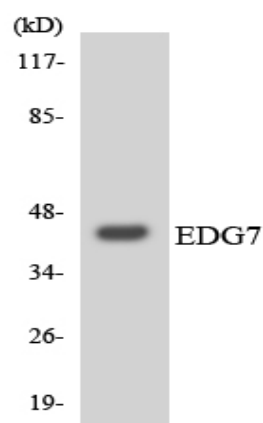
Western Blot analysis of 3T3 cells using EDG-7 Polyclonal Antibody



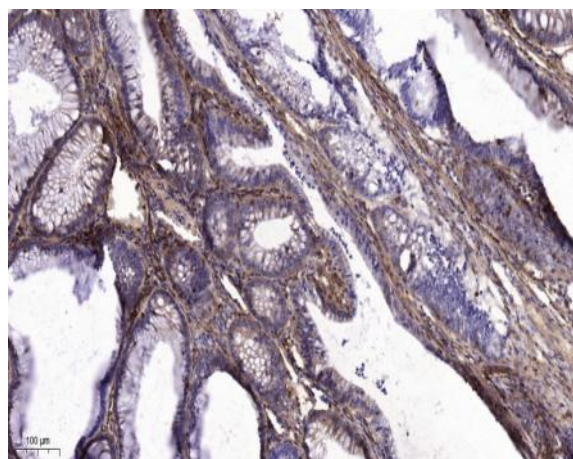
Immunofluorescence analysis of A549 cells, using EDG7 Antibody. The picture on the right is blocked with the synthesized peptide.



Western blot analysis of lysates from Jurkat cells, using EDG7 Antibody. The lane on the right is blocked with the synthesized peptide.



Western blot analysis of the lysates from 293 cells using EDG7 antibody.



Immunohistochemical analysis of paraffin-embedded human colon cancer. 1, Tris-EDTA, pH 9.0 was used for antigen retrieval. 2 Antibody was diluted at 1:200 (4 ° overnight). 3, Secondary antibody was diluted at 1:200 (room temperature, 45 min).