

**COL20A1 Polyclonal Antibody**

<b>Catalog No :</b>	YT1031
<b>Reactivity :</b>	Human;Mouse;Rat
<b>Applications :</b>	WB;IHC;IF;ELISA
<b>Target :</b>	COL20A1
<b>Fields :</b>	>>Protein digestion and absorption
<b>Gene Name :</b>	COL20A1
<b>Protein Name :</b>	Collagen alpha-1(XX) chain
<b>Human Gene Id :</b>	57642/1301/1289
<b>Human Swiss Prot No :</b>	Q9P218
<b>Mouse Gene Id :</b>	73368
<b>Mouse Swiss Prot No :</b>	Q923P0
<b>Immunogen :</b>	The antiserum was produced against synthesized peptide derived from human Collagen XX alpha1. AA range:1151-1200
<b>Specificity :</b>	COL20A1 Polyclonal Antibody detects endogenous levels of COL20A1 protein.
<b>Formulation :</b>	Liquid in PBS containing 50% glycerol, 0.5% BSA and 0.02% sodium azide.
<b>Source :</b>	Polyclonal, Rabbit,IgG
<b>Dilution :</b>	WB 1:500 - 1:2000. IHC 1:100 - 1:300. IF 1:200 - 1:1000. ELISA: 1:20000. Not yet tested in other applications.
<b>Purification :</b>	The antibody was affinity-purified from rabbit antiserum by affinity-chromatography using epitope-specific immunogen.
<b>Concentration :</b>	1 mg/ml

**Storage Stability :** -15°C to -25°C/1 year(Do not lower than -25°C)

**Observed Band :** 140kD

**Background :** COL20A1 (Collagen Type XX Alpha 1) is a Protein Coding gene. Among its related pathways are Collagen biosynthesis and modifying enzymes and ERK Signaling. An important paralog of this gene is MATN1.

**Function :** function:Probable collagen protein.,similarity:Contains 1 collagen-like domain.,similarity:Contains 1 TSP N-terminal (TSPN) domain.,similarity:Contains 1 VWFA domain.,similarity:Contains 6 fibronectin type-III domains.,tissue specificity:High expression in heart, lung, liver, skeletal muscle, kidney, pancreas, spleen, testis, ovary, subthalamic nucleus and fetal liver. Weak expression in other tissues tested.,

**Subcellular Location :** Secreted, extracellular space .

**Expression :** High expression in heart, lung, liver, skeletal muscle, kidney, pancreas, spleen, testis, ovary, subthalamic nucleus and fetal liver. Weak expression in other tissues tested.

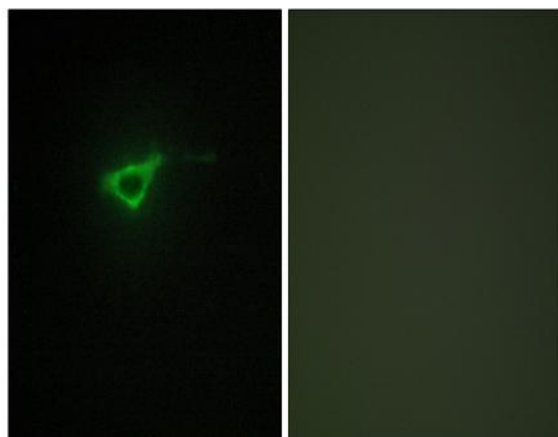
**Sort :** 4382

**No4 :** 1

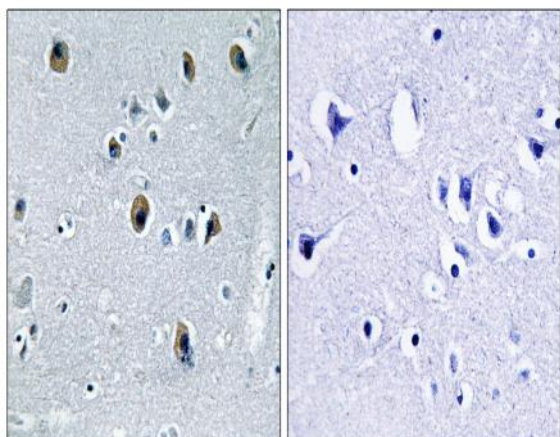
**Host :** Rabbit

**Modifications :** Unmodified

## Products Images



Immunofluorescence analysis of NIH/3T3 cells, using Collagen XX alpha1 Antibody. The picture on the right is blocked with the synthesized peptide.



Immunohistochemistry analysis of paraffin-embedded human brain tissue, using Collagen XX alpha1 Antibody. The picture on the right is blocked with the synthesized peptide.

