

DCC Polyclonal Antibody

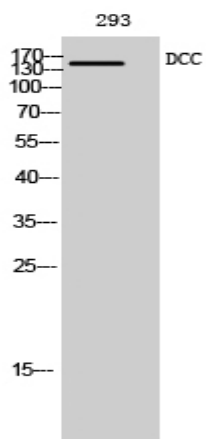
Catalog No :	YT1300
Reactivity :	Human;Mouse;Rat
Applications :	WB;IF;ELISA
Target :	DCC
Fields :	>>Axon guidance;>>Pathways in cancer;>>Colorectal cancer
Gene Name :	DCC
Protein Name :	Netrin receptor DCC
Human Gene Id :	1630
Human Swiss Prot No :	P43146
Mouse Gene Id :	13176
Mouse Swiss Prot No :	P70211
Rat Gene Id :	25311
Rat Swiss Prot No :	Q63155
Immunogen :	The antiserum was produced against synthesized peptide derived from human DCC. AA range:441-490
Specificity :	DCC Polyclonal Antibody detects endogenous levels of DCC protein.
Formulation :	Liquid in PBS containing 50% glycerol, 0.5% BSA and 0.02% sodium azide.
Source :	Polyclonal, Rabbit,IgG
Dilution :	WB 1:500 - 1:2000. IF 1:200 - 1:1000. ELISA: 1:20000. Not yet tested in other applications.

Purification :	The antibody was affinity-purified from rabbit antiserum by affinity-chromatography using epitope-specific immunogen.
Concentration :	1 mg/ml
Storage Stability :	-15°C to -25°C/1 year(Do not lower than -25°C)
Observed Band :	160kD
Cell Pathway :	Axon guidance;Pathways in cancer;Colorectal cancer;
Background :	This gene encodes a netrin 1 receptor. The transmembrane protein is a member of the immunoglobulin superfamily of cell adhesion molecules, and mediates axon guidance of neuronal growth cones towards sources of netrin 1 ligand. The cytoplasmic tail interacts with the tyrosine kinases Src and focal adhesion kinase (FAK, also known as PTK2) to mediate axon attraction. The protein partially localizes to lipid rafts, and induces apoptosis in the absence of ligand. The protein functions as a tumor suppressor, and is frequently mutated or downregulated in colorectal cancer and esophageal carcinoma. [provided by RefSeq, Oct 2009],
Function :	disease:Colorectal tumors that lost their capacity to differentiate into mucus producing cells uniformly lack DCC expression. Inactivation of DCC due to allelic deletion and/or point mutations may cause both lymphatic and hematogenous metastasis of esophageal squamous cell carcinomas.,function:Receptor for netrin required for axon guidance. Mediates axon attraction of neuronal growth cones in the developing nervous system upon ligand binding. Its association with UNC5 proteins may trigger signaling for axon repulsion. It also acts as a dependence receptor required for apoptosis induction when not associated with netrin ligand. Implicated as a tumor suppressor gene.,PTM:Ubiquitinated; mediated by SIAH1 or SIAH2 and leading to its subsequent proteasomal degradation.,similarity:Belongs to the immunoglobulin superfamily. DCC family.,similarity:Contains 4 Ig-like C2-type (immunoglobulin-like)
Subcellular Location :	Membrane; Single-pass type I membrane protein.
Expression :	Found in axons of the central and peripheral nervous system and in differentiated cell types of the intestine. Not expressed in colorectal tumor cells that lost their capacity to differentiate into mucus producing cells.
Tag :	hot
Sort :	1380
No3 :	ab273570
No4 :	1

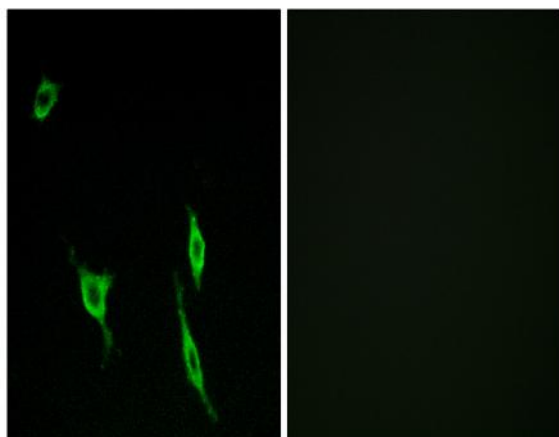
Host : Rabbit

Modifications : Unmodified

Products Images



Western Blot analysis of 293 cells using DCC Polyclonal Antibody diluted at 1:500



Immunofluorescence analysis of LOVO cells, using DCC Antibody. The picture on the right is blocked with the synthesized peptide.