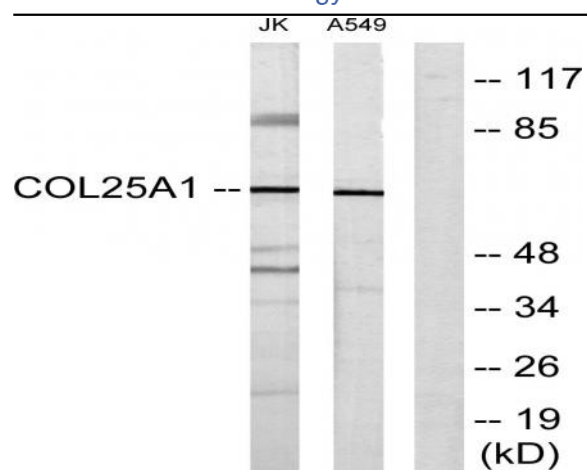


COL25A1 Polyclonal Antibody

Catalog No :	YT1021
Reactivity :	Human;Mouse
Applications :	WB;IHC;IF;ELISA
Target :	COL25A1
Fields :	>>Protein digestion and absorption
Gene Name :	COL25A1
Protein Name :	Collagen alpha-1 (XXV) chain
Human Gene Id :	84570
Human Swiss Prot No :	Q9BXS0
Mouse Gene Id :	77018
Mouse Swiss Prot No :	Q99MQ5
Immunogen :	The antiserum was produced against synthesized peptide derived from human Collagen XXV alpha1. AA range:101-150
Specificity :	COL25A1 Polyclonal Antibody detects endogenous levels of COL25A1 protein.
Formulation :	Liquid in PBS containing 50% glycerol, 0.5% BSA and 0.02% sodium azide.
Source :	Polyclonal, Rabbit,IgG
Dilution :	WB 1:500 - 1:2000. IHC 1:100 - 1:300. IF 1:200 - 1:1000. ELISA: 1:20000. Not yet tested in other applications.
Purification :	The antibody was affinity-purified from rabbit antiserum by affinity-chromatography using epitope-specific immunogen.
Concentration :	1 mg/ml

Storage Stability :	-15°C to -25°C/1 year(Do not lower than -25°C)
Observed Band :	64kD
Background :	<p>This gene encodes a brain-specific membrane associated collagen. A product of proteolytic processing of the encoded protein, CLAC (collagenous Alzheimer amyloid plaque component), binds to amyloid beta-peptides found in Alzheimer amyloid plaques but CLAC inhibits rather than facilitates amyloid fibril elongation (PMID: 16300410). A study of over-expression of this collagen in mice, however, found changes in pathology and behavior suggesting that the encoded protein may promote amyloid plaque formation (PMID: 19548013). Multiple transcript variants encoding different isoforms have been found for this gene. [provided by RefSeq, Dec 2011],</p>
Function :	<p>caution:The pyrrolidone carboxylic acid reported in PubMed:11927537 probably formed artifactually from Glu-113 during the extraction procedure in 70% formic acid. In PubMed:15522881, the protein was found to have unblocked Glu at the N-terminus.,function:Inhibits fibrillization of beta amyloid peptide during the elongation phase. Has also been shown to assemble amyloid fibrils into protease-resistant aggregates. Binds heparin.,PTM:Glycosylated.,PTM:Hydroxylated on 11% of proline residues and 49% of lysine residues.,PTM:Undergoes proteolytic cleavage by furin protease to yield the soluble collagen-like Alzheimer amyloid plaque component.,similarity:Contains 7 collagen-like domains.,subcellular location:After proteolytic cleavage, CLAC is secreted.,subunit:Forms homodimers and homotrimers. Binds to the fibrillized forms of beta amyloid peptide 40 (beta-APP40) and beta amyloid peptide 42 (b</p>
Subcellular Location :	Membrane ; Single-pass type II membrane protein . After proteolytic cleavage, CLAC is secreted.
Expression :	Expressed predominantly in brain. Deposited preferentially in primitive or neuritic amyloid plaques which are typical of Alzheimer disease.
Sort :	4384
No4 :	1
Host :	Rabbit
Modifications :	Unmodified

Products Images



Western blot analysis of lysates from Jurkat and A549 cells, using Collagen XXV alpha1 Antibody. The lane on the right is blocked with the synthesized peptide.