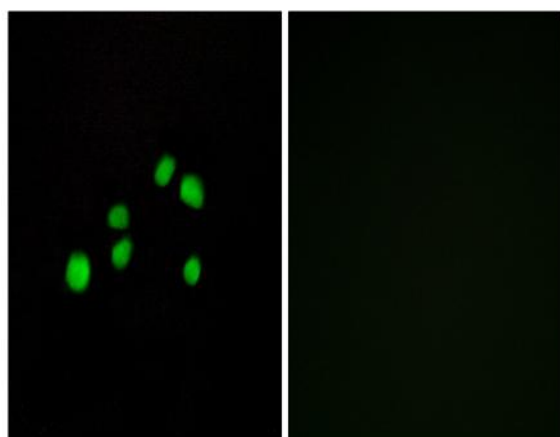


COL23A1 Polyclonal Antibody

Catalog No :	YT1020
Reactivity :	Human;Mouse;Rat
Applications :	IF;ELISA
Target :	COL23A1
Fields :	>>Protein digestion and absorption
Gene Name :	COL23A1
Protein Name :	Collagen alpha-1(XXIII) chain
Human Gene Id :	91522
Human Swiss Prot No :	Q86Y22
Mouse Gene Id :	237759
Mouse Swiss Prot No :	Q8K4G2
Rat Gene Id :	1.0091e+008
Rat Swiss Prot No :	Q810Y4
Immunogen :	The antiserum was produced against synthesized peptide derived from human Collagen XXIII alpha1. AA range:461-510
Specificity :	COL23A1 Polyclonal Antibody detects endogenous levels of COL23A1 protein.
Formulation :	Liquid in PBS containing 50% glycerol, 0.5% BSA and 0.02% sodium azide.
Source :	Polyclonal, Rabbit,IgG
Dilution :	IF 1:200 - 1:1000. ELISA: 1:10000. Not yet tested in other applications.

Purification :	The antibody was affinity-purified from rabbit antiserum by affinity-chromatography using epitope-specific immunogen.
Concentration :	1 mg/ml
Storage Stability :	-15°C to -25°C/1 year(Do not lower than -25°C)
Molecularweight :	52kD
Background :	COL23A1 is a member of the transmembrane collagens, a subfamily of the nonfibrillar collagens that contain a single pass hydrophobic transmembrane domain (Banyard et al., 2003 [PubMed 12644459]).[supplied by OMIM, Mar 2008],
Function :	PTM:Undergoes proteolytic cleavage by furin protease to yield a 60 kDa soluble form that forms an homotrimer and exhibits a low affinity interaction with heparin.,similarity:Contains 5 collagen-like domains.,subunit:Homotrimer.,
Subcellular Location :	Cell membrane ; Single-pass type II membrane protein ; Extracellular side .
Expression :	Brain,Placenta,Testis,
Sort :	4383
No4 :	1
Host :	Rabbit
Modifications :	Unmodified

Products Images



Immunofluorescence analysis of HepG2 cells, using Collagen XXIII alpha1 Antibody. The picture on the right is blocked with the synthesized peptide.