

## CNT2 Polyclonal Antibody

<b>Catalog No :</b>	YT1004
<b>Reactivity :</b>	Human;Mouse;Rat
<b>Applications :</b>	WB;IHC;IF;ELISA
<b>Target :</b>	CNT2
<b>Gene Name :</b>	SLC28A2
<b>Protein Name :</b>	Sodium/nucleoside cotransporter 2
<b>Human Gene Id :</b>	9153
<b>Human Swiss Prot No :</b>	O43868
<b>Mouse Swiss Prot No :</b>	O88627
<b>Rat Gene Id :</b>	60423
<b>Rat Swiss Prot No :</b>	Q62773
<b>Immunogen :</b>	The antiserum was produced against synthesized peptide derived from human SLC28A2. AA range:371-420
<b>Specificity :</b>	CNT2 Polyclonal Antibody detects endogenous levels of CNT2 protein.
<b>Formulation :</b>	Liquid in PBS containing 50% glycerol, 0.5% BSA and 0.02% sodium azide.
<b>Source :</b>	Polyclonal, Rabbit,IgG
<b>Dilution :</b>	WB 1:500 - 1:2000. IHC 1:100 - 1:300. ELISA: 1:10000.. IF 1:50-200
<b>Purification :</b>	The antibody was affinity-purified from rabbit antiserum by affinity-chromatography using epitope-specific immunogen.
<b>Concentration :</b>	1 mg/ml

**Storage Stability :** -15°C to -25°C/1 year (Do not lower than -25°C)

**Observed Band :** 65kD

**Background :** enzyme regulation: Inhibited by formycin B., function: Sodium-dependent and purine-selective transporter. Exhibits the transport characteristics of the nucleoside transport system cif or N1 subtype (N1/cif) (selective for purine nucleosides and uridine). Plays a critical role in specific uptake and salvage of purine nucleosides in kidney and other tissues., similarity: Belongs to the concentrative nucleoside transporter (CNT) (TC 2.A.41) family., tissue specificity: Expressed in heart and skeletal muscle followed by liver, kidney, intestine, pancreas, placenta and brain. Weak expression in lung.,

**Function :** enzyme regulation: Inhibited by formycin B., function: Sodium-dependent and purine-selective transporter. Exhibits the transport characteristics of the nucleoside transport system cif or N1 subtype (N1/cif) (selective for purine nucleosides and uridine). Plays a critical role in specific uptake and salvage of purine nucleosides in kidney and other tissues., similarity: Belongs to the concentrative nucleoside transporter (CNT) (TC 2.A.41) family., tissue specificity: Expressed in heart and skeletal muscle followed by liver, kidney, intestine, pancreas, placenta and brain. Weak expression in lung.,

**Subcellular Location :** Membrane ; Multi-pass membrane protein .

**Expression :** Expressed in heart and skeletal muscle followed by liver, kidney, intestine, pancreas, placenta and brain (PubMed:9435697). Weak expression in lung (PubMed:9435697).

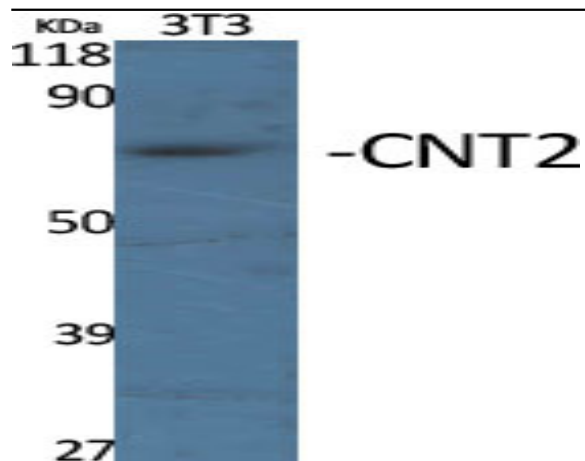
**Sort :** 4354

**No4 :** 1

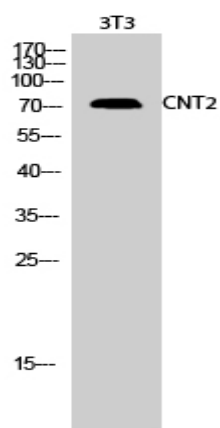
**Host :** Rabbit

**Modifications :** Unmodified

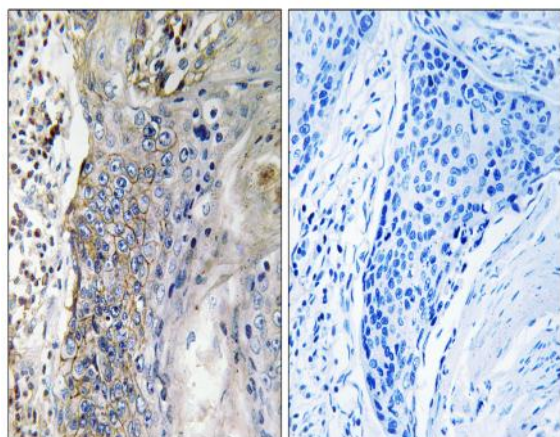
## Products Images



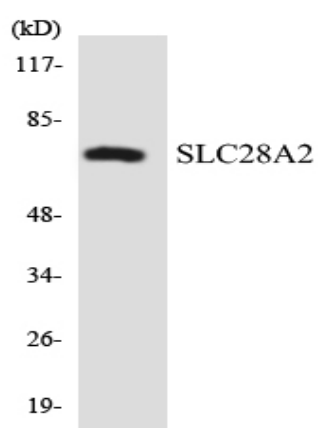
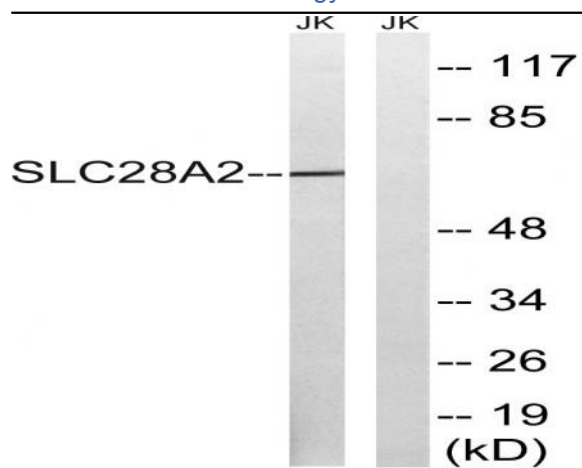
Western Blot analysis of various cells using CNT2 Polyclonal Antibody



Western Blot analysis of 3T3 cells using CNT2 Polyclonal Antibody



Immunohistochemistry analysis of paraffin-embedded human lung carcinoma tissue, using SLC28A2 Antibody. The picture on the right is blocked with the synthesized peptide.



Western blot analysis of lysates from Jurkat cells, using SLC28A2 Antibody. The lane on the right is blocked with the synthesized peptide.

Western blot analysis of the lysates from HepG2 cells using SLC28A2 antibody.