

Cytokeratin 5 Polyclonal Antibody

Catalog No :	YT1271
Reactivity :	Human;Mouse;Rat
Applications :	WB;IHC;IF;ELISA
Target :	Cytokeratin 5
Gene Name :	KRT5
Protein Name :	Keratin type II cytoskeletal 5
Human Gene Id :	3852
Human Swiss Prot No :	P13647
Mouse Gene Id :	110308
Mouse Swiss Prot No :	Q922U2
Rat Gene Id :	369017
Rat Swiss Prot No :	Q6P6Q2
Immunogen :	The antiserum was produced against synthesized peptide derived from human Keratin 5. AA range:541-590
Specificity :	Cytokeratin 5 Polyclonal Antibody detects endogenous levels of Cytokeratin 5 protein.
Formulation :	Liquid in PBS containing 50% glycerol, 0.5% BSA and 0.02% sodium azide.
Source :	Polyclonal, Rabbit,IgG
Dilution :	WB 1:500 - 1:2000. IHC 1:100 - 1:300. IF 1:200 - 1:1000. ELISA: 1:10000. Not yet tested in other applications.
Purification :	The antibody was affinity-purified from rabbit antiserum by affinity-

chromatography using epitope-specific immunogen.

Concentration : 1 mg/ml

Storage Stability : -15°C to -25°C/1 year(Do not lower than -25°C)

Observed Band : 62kD

Background : keratin 5(KRT5) Homo sapiens The protein encoded by this gene is a member of the keratin gene family. The type II cytokeratins consist of basic or neutral proteins which are arranged in pairs of heterotypic keratin chains coexpressed during differentiation of simple and stratified epithelial tissues. This type II cytokeratin is specifically expressed in the basal layer of the epidermis with family member KRT14. Mutations in these genes have been associated with a complex of diseases termed epidermolysis bullosa simplex. The type II cytokeratins are clustered in a region of chromosome 12q12-q13. [provided by RefSeq, Jul 2008],

Function : disease:Defects in KRT5 are a cause of epidermolysis bullosa simplex Dowling-Meara type (DM-EBS) [MIM:131760]. DM-EBS is a severe form of intraepidermal epidermolysis bullosa characterized by generalized herpetiform blistering, milia formation, dystrophic nails, and mucous membrane involvement.,disease:Defects in KRT5 are a cause of epidermolysis bullosa simplex Koebner type (K-EBS) [MIM:131900]. K-EBS is a form of intraepidermal epidermolysis bullosa characterized by generalized skin blistering. The phenotype is not fundamentally distinct from the Dowling-Meara type, although it is less severe.,disease:Defects in KRT5 are a cause of epidermolysis bullosa simplex Weber-Cockayne type (WC-EBS) [MIM:131800]. WC-EBS is a form of intraepidermal epidermolysis bullosa characterized by blistering limited to palmar and plantar areas of the skin.,disease:Defects in KRT5 are the cause of Dowling-D

Subcellular Location : nucleus,cytoplasm,mitochondrion,cytosol,intermediate filament,plasma membrane,membrane,keratin filament,extracellular exosome,

Expression : Expressed in corneal epithelium (at protein level).

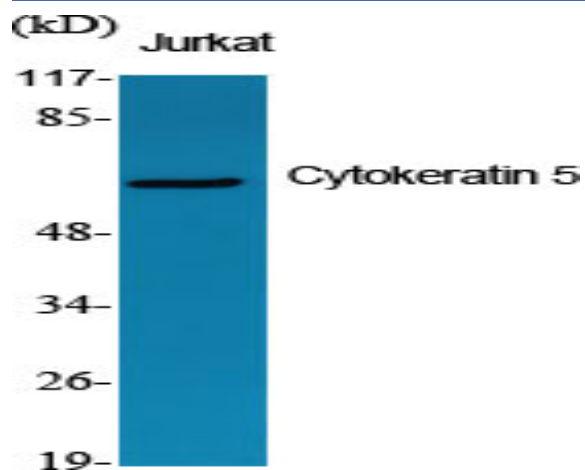
Sort : 4934

No4 : 1

Host : Rabbit

Modifications : Unmodified

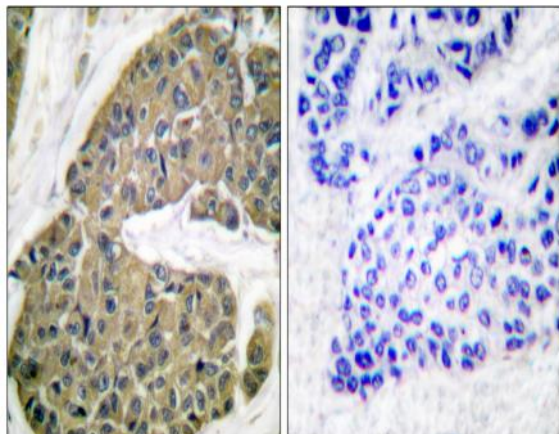
Products Images



Western Blot analysis of various cells using Cytokeratin 5 Polyclonal Antibody diluted at 1:1000



Western Blot analysis of HepG2 cells using Cytokeratin 5 Polyclonal Antibody diluted at 1:1000



Immunohistochemistry analysis of paraffin-embedded human breast carcinoma tissue, using Keratin 5 Antibody. The picture on the right is blocked with the synthesized peptide.

