

CNK1 Polyclonal Antibody

Catalog No :	YT0998
Reactivity :	Human;Mouse;Rat
Applications :	WB;IHC;IF;ELISA
Target :	CNK1
Gene Name :	CNKSR1
Protein Name :	Connector enhancer of kinase suppressor of ras 1
Human Gene Id :	10256
Human Swiss Prot No :	Q969H4
Immunogen :	The antiserum was produced against synthesized peptide derived from human CNKR1. AA range:491-540
Specificity :	CNK1 Polyclonal Antibody detects endogenous levels of CNK1 protein.
Formulation :	Liquid in PBS containing 50% glycerol, 0.5% BSA and 0.02% sodium azide.
Source :	Polyclonal, Rabbit,IgG
Dilution :	WB 1:500 - 1:2000. IHC 1:100 - 1:300. IF 1:200 - 1:1000. ELISA: 1:10000. Not yet tested in other applications.
Purification :	The antibody was affinity-purified from rabbit antiserum by affinity-chromatography using epitope-specific immunogen.
Concentration :	1 mg/ml
Storage Stability :	-15°C to -25°C/1 year(Do not lower than -25°C)
Observed Band :	80kD
Background :	This gene encodes a protein containing several motifs involved in protein-protein

interaction, including PDZ, PH (Pleckstrin homology), and SAM (sterile alpha motif) domains. The encoded protein acts as a scaffold component for receptor tyrosine kinase signaling and may mediate crosstalk between different signaling pathways. Alternative splicing results in multiple transcript variants. [provided by RefSeq, Jul 2014],

Function :

function:May function as an adapter protein or regulator of Ras signaling pathways.,PTM:Phosphorylated on tyrosine.,similarity:Belongs to the CNKSR family.,similarity:Contains 1 CRIC domain.,similarity:Contains 1 PDZ (DHR) domain.,similarity:Contains 1 PH domain.,similarity:Contains 1 SAM (sterile alpha motif) domain.,subunit:Interacts with RHO and RALGDS.,

Subcellular Location :

Cytoplasm . Membrane ; Peripheral membrane protein .

Expression :

Brain,Epithelium,Kidney,Liver,Neuroepithelium,Place

Sort :

4340

No4 :

1

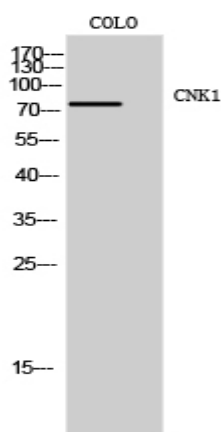
Host :

Rabbit

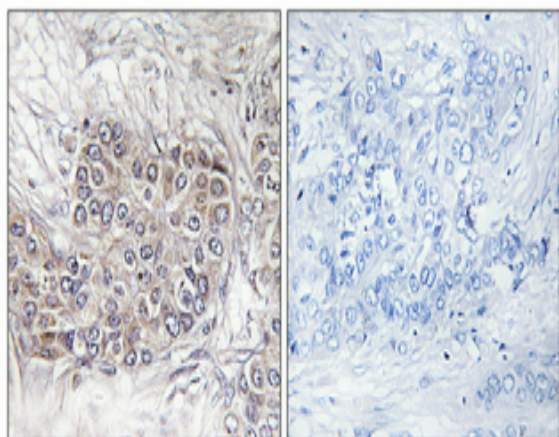
Modifications :

Unmodified

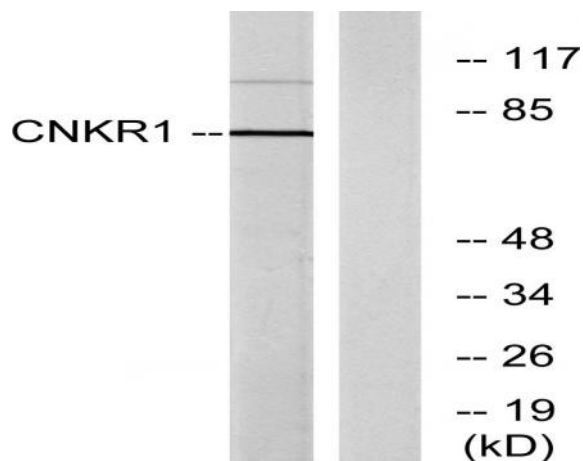
Products Images



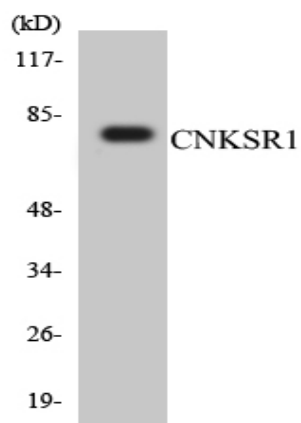
Western Blot analysis of COLO cells using CNK1 Polyclonal Antibody



Immunohistochemical analysis of paraffin-embedded Human breast cancer. Antibody was diluted at 1:100(4° overnight). High-pressure and temperature Tris-EDTA,pH8.0 was used for antigen retrieval. Negative contrl (right) obtaned from antibody was pre-absorbed by immunogen peptide.



Western blot analysis of lysates from COLO205 cells, using CNKR1 Antibody. The lane on the right is blocked with the synthesized peptide.



Western blot analysis of the lysates from HT-29 cells using CNKSR1 antibody.