

CMTM3 Polyclonal Antibody

Catalog No :	YT0985
Reactivity :	Human;Monkey
Applications :	WB;ELISA
Target :	CMTM3
Gene Name :	CMTM3
Protein Name :	CKLF-like MARVEL transmembrane domain-containing protein 3
Human Gene Id :	123920
Human Swiss Prot No :	Q96MX0
Mouse Swiss Prot No :	Q99LJ5
Immunogen :	The antiserum was produced against synthesized peptide derived from human CKLF3. AA range:1-50
Specificity :	CMTM3 Polyclonal Antibody detects endogenous levels of CMTM3 protein.
Formulation :	Liquid in PBS containing 50% glycerol, 0.5% BSA and 0.02% sodium azide.
Source :	Polyclonal, Rabbit,IgG
Dilution :	WB 1:500 - 1:2000. ELISA: 1:40000. Not yet tested in other applications.
Purification :	The antibody was affinity-purified from rabbit antiserum by affinity-chromatography using epitope-specific immunogen.
Concentration :	1 mg/ml
Storage Stability :	-15°C to -25°C/1 year(Do not lower than -25°C)
Observed Band :	22kD

Background : This gene belongs to the chemokine-like factor gene superfamily, a novel family that is similar to the chemokine and the transmembrane 4 superfamilies of signaling molecules. This gene is one of several chemokine-like factor genes located in a cluster on chromosome 16. Alternatively spliced transcript variants containing different 5' UTRs, but encoding the same protein, have been identified. [provided by RefSeq, Jul 2008],

Function : similarity:Belongs to the chemokine-like factor family.,similarity:Contains 1 MARVEL domain.,tissue specificity:Expressed in the leukocytes, placenta and testis.,

Subcellular Location : Membrane; Multi-pass membrane protein.

Expression : Expressed in the leukocytes, placenta and testis.

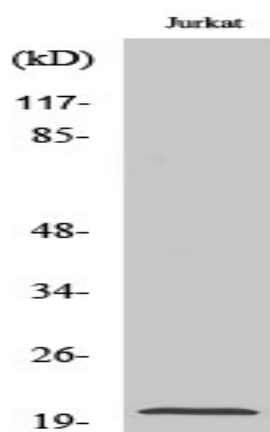
Sort : 4305

No4 : 1

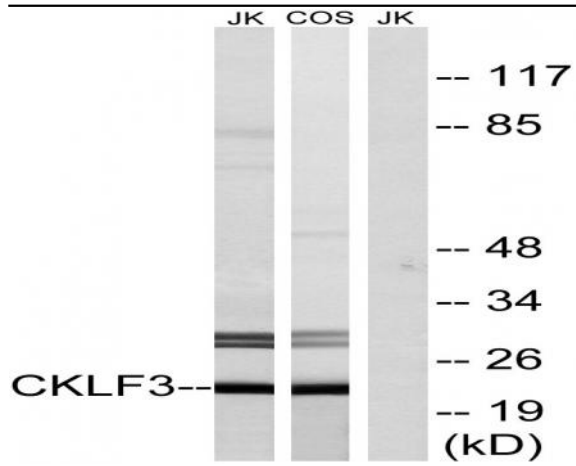
Host : Rabbit

Modifications : Unmodified

Products Images



Western Blot analysis of various cells using CMTM3 Polyclonal Antibody diluted at 1:1000



Western blot analysis of lysates from Jurkat and COS cells, using CKLF3 Antibody. The lane on the right is blocked with the synthesized peptide.