

## CMTM2 Polyclonal Antibody

<b>Catalog No :</b>	YT0984
<b>Reactivity :</b>	Human
<b>Applications :</b>	WB;ELISA
<b>Target :</b>	CMTM2
<b>Gene Name :</b>	CMTM2
<b>Protein Name :</b>	CKLF-like MARVEL transmembrane domain-containing protein 2
<b>Human Gene Id :</b>	146225
<b>Human Swiss Prot No :</b>	Q8TAZ6
<b>Immunogen :</b>	The antiserum was produced against synthesized peptide derived from human CKLF2. AA range:171-220
<b>Specificity :</b>	CMTM2 Polyclonal Antibody detects endogenous levels of CMTM2 protein.
<b>Formulation :</b>	Liquid in PBS containing 50% glycerol, 0.5% BSA and 0.02% sodium azide.
<b>Source :</b>	Polyclonal, Rabbit,IgG
<b>Dilution :</b>	WB 1:500 - 1:2000. ELISA: 1:40000. Not yet tested in other applications.
<b>Purification :</b>	The antibody was affinity-purified from rabbit antiserum by affinity-chromatography using epitope-specific immunogen.
<b>Concentration :</b>	1 mg/ml
<b>Storage Stability :</b>	-15°C to -25°C/1 year(Do not lower than -25°C)
<b>Observed Band :</b>	27kD
<b>Background :</b>	This gene belongs to the chemokine-like factor gene superfamily, a novel family that links the chemokine and the transmembrane 4 superfamilies of signaling

molecules. The protein encoded by this gene may play an important role in testicular development. [provided by RefSeq, Jul 2008],

**Function :** similarity:Belongs to the chemokine-like factor family.,similarity:Contains 1 MARVEL domain.,tissue specificity:Highly expressed in testis.,

**Subcellular Location :** Membrane; Multi-pass membrane protein.

**Expression :** Highly expressed in testis.

**Tag :** orthogonal

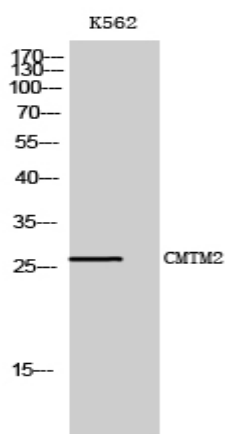
**Sort :** 775

**No4 :** 1

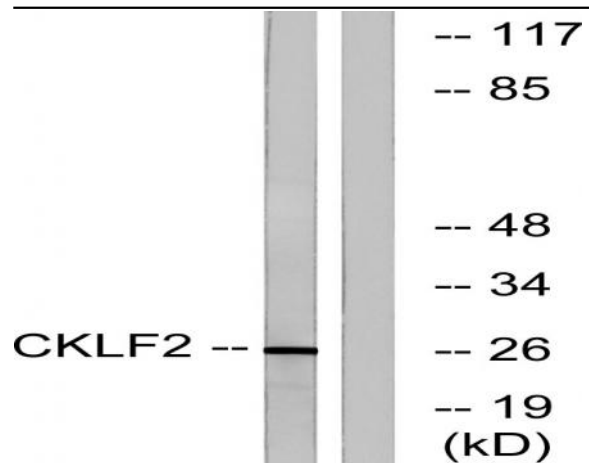
**Host :** Rabbit

**Modifications :** Unmodified

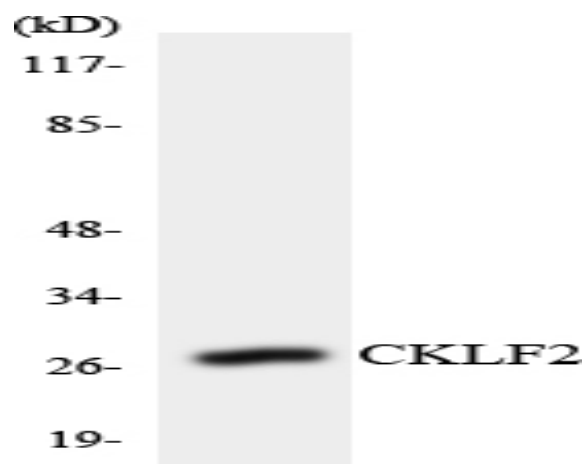
## Products Images



Western Blot analysis of K562 cells using CMTM2 Polyclonal Antibody



Western blot analysis of lysates from K562 cells, using CKLF2 Antibody. The lane on the right is blocked with the synthesized peptide.



Western blot analysis of the lysates from COLO205 cells using CKLF2 antibody.