

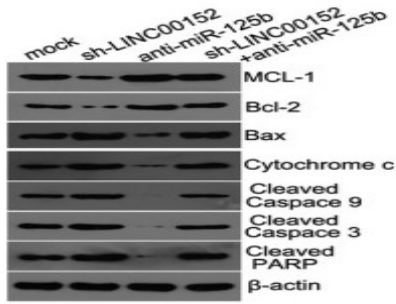
Cytochrome c1 Polyclonal Antibody

Catalog No :	YT1258
Reactivity :	Human;Mouse
Applications :	WB;IF;ELISA
Target :	Cytochrome c1
Fields :	>>Oxidative phosphorylation;>>Metabolic pathways;>>Cardiac muscle contraction;>>Thermogenesis;>>Non-alcoholic fatty liver disease;>>Alzheimer disease;>>Parkinson disease;>>Amyotrophic lateral sclerosis;>>Huntington disease;>>Prion disease;>>Pathways of neurodegeneration - multiple diseases;>>Chemical carcinogenesis - reactive oxygen species;>>Diabetic cardiomyopathy
Gene Name :	CYC1
Protein Name :	Cytochrome c1 heme protein mitochondrial
Human Gene Id :	1537
Human Swiss Prot No :	P08574
Mouse Gene Id :	66445
Mouse Swiss Prot No :	Q9D0M3
Immunogen :	The antiserum was produced against synthesized peptide derived from human CYC1. AA range:132-181
Specificity :	Cytochrome c1 Polyclonal Antibody detects endogenous levels of Cytochrome c1 protein.
Formulation :	Liquid in PBS containing 50% glycerol, 0.5% BSA and 0.02% sodium azide.
Source :	Polyclonal, Rabbit,IgG
Dilution :	WB 1:500-2000; IF ICC 1:100-500;ELISA 1:5000-20000

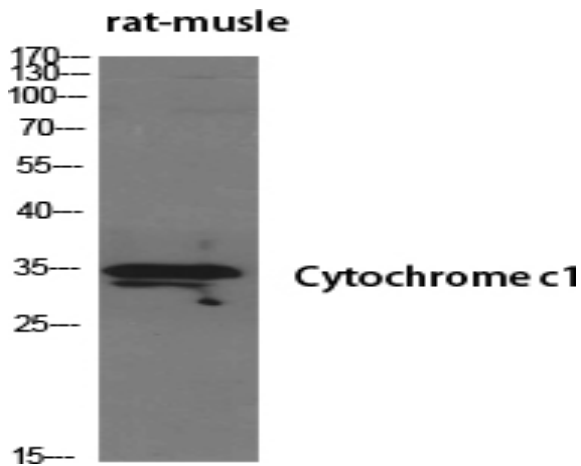
Purification :	The antibody was affinity-purified from rabbit antiserum by affinity-chromatography using epitope-specific immunogen.
Concentration :	1 mg/ml
Storage Stability :	-15°C to -25°C/1 year(Do not lower than -25°C)
Observed Band :	35kD
Cell Pathway :	Oxidative phosphorylation;Cardiac muscle contraction;Alzheimer's disease;Parkinson's disease;Huntington's disease;
Background :	This gene encodes a subunit of the cytochrome bc1 complex, which plays an important role in the mitochondrial respiratory chain by transferring electrons from the Rieske iron-sulfur protein to cytochrome c. Mutations in this gene may cause mitochondrial complex III deficiency, nuclear type 6. [provided by RefSeq, Dec 2013],
Function :	function:This is the heme-containing component of the cytochrome b-c1 complex, which accepts electrons from Rieske protein and transfers electrons to cytochrome c in the mitochondrial respiratory chain.,PTM:binds 1 heme group per subunit.,similarity:Belongs to the cytochrome c family.,subunit:The bc1 complex contains 11 subunits: 3 respiratory subunits (cytochrome b, cytochrome c1 and Rieske/UQCRC1/QCR1), 2 core proteins (UQCRC1/QCR1 and UQCRC2/QCR2) and 6 low-molecular weight proteins (UQCRH/QCR6, UQCRB/QCR7, UQCRQ/QCR8, UQCR10/QCR9, UQCR11/QCR10 and a cleavage product of Rieske/UQCRC1),.
Subcellular Location :	Mitochondrion inner membrane ; Single-pass membrane protein .
Expression :	Brain,Kidney,Lung,Skin,
Tag :	orthogonal
Sort :	266
No4 :	1
Host :	Rabbit
Modifications :	Unmodified

Products Images

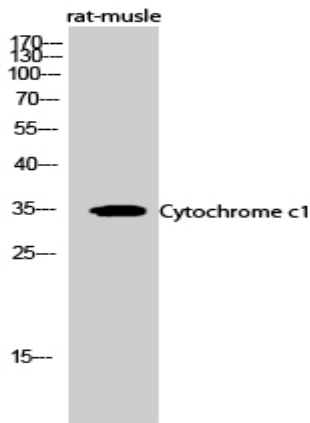
A



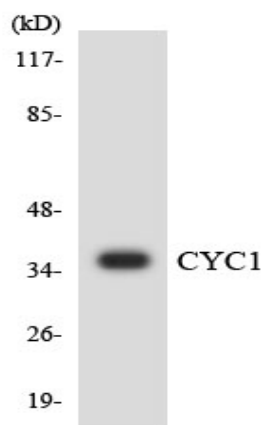
Chen, Puxiang, et al. "Long noncoding RNA LINC00152 promotes cell proliferation through competitively binding endogenous miR-125b with MCL-1 by regulating mitochondrial apoptosis pathways in ovarian cancer." *Cancer medicine* 7.9 (2018): 4530-4541.



Western Blot analysis of various cells using Cytochrome c1 Polyclonal Antibody diluted at 1:500



Western Blot analysis of rat-muscle cells using Cytochrome c1 Polyclonal Antibody diluted at 1:500



Western blot analysis of the lysates from HUVEC cells using CYC1 antibody.