

## CLP36 Polyclonal Antibody

|                              |                                                                                                                       |
|------------------------------|-----------------------------------------------------------------------------------------------------------------------|
| <b>Catalog No :</b>          | YT0979                                                                                                                |
| <b>Reactivity :</b>          | Human;Mouse;Rat                                                                                                       |
| <b>Applications :</b>        | WB;IHC;IF;ELISA                                                                                                       |
| <b>Target :</b>              | CLP36                                                                                                                 |
| <b>Gene Name :</b>           | PDLIM1                                                                                                                |
| <b>Protein Name :</b>        | PDZ and LIM domain protein 1                                                                                          |
| <b>Human Gene Id :</b>       | 9124                                                                                                                  |
| <b>Human Swiss Prot No :</b> | O00151                                                                                                                |
| <b>Mouse Gene Id :</b>       | 54132                                                                                                                 |
| <b>Mouse Swiss Prot No :</b> | O70400                                                                                                                |
| <b>Rat Gene Id :</b>         | 54133                                                                                                                 |
| <b>Rat Swiss Prot No :</b>   | P52944                                                                                                                |
| <b>Immunogen :</b>           | The antiserum was produced against synthesized peptide derived from human PDLIM1. AA range:61-110                     |
| <b>Specificity :</b>         | CLP36 Polyclonal Antibody detects endogenous levels of CLP36 protein.                                                 |
| <b>Formulation :</b>         | Liquid in PBS containing 50% glycerol, 0.5% BSA and 0.02% sodium azide.                                               |
| <b>Source :</b>              | Polyclonal, Rabbit,IgG                                                                                                |
| <b>Dilution :</b>            | WB 1:500 - 1:2000. IHC 1:100 - 1:300. IF 1:200 - 1:1000. ELISA: 1:5000. Not yet tested in other applications.         |
| <b>Purification :</b>        | The antibody was affinity-purified from rabbit antiserum by affinity-chromatography using epitope-specific immunogen. |

**Concentration :** 1 mg/ml**Storage Stability :** -15°C to -25°C/1 year(Do not lower than -25°C)**Observed Band :** 36kD**Background :**

This gene encodes a member of the enigma protein family. The protein contains two protein interacting domains, a PDZ domain at the amino terminal end and one to three LIM domains at the carboxyl terminal. It is a cytoplasmic protein associated with the cytoskeleton. The protein may function as an adapter to bring other LIM-interacting proteins to the cytoskeleton. Pseudogenes associated with this gene are located on chromosomes 3, 14 and 17. [provided by RefSeq, Oct 2012],

---

**Function :**

function:Cytoskeletal protein that may act as an adapter that brings other proteins (like kinases) to the cytoskeleton.,similarity:Contains 1 LIM zinc-binding domain.,similarity:Contains 1 PDZ (DHR) domain.,subcellular location:Associates with the actin stress fibers.,subunit:Interacts with alpha-actinins 1, 2 and 4.,tissue specificity:Strongly expressed in the heart and skeletal muscle, moderately expressed in the spleen, small intestine, colon, placenta, and lung. A lower level expression is seen in liver, thymus, kidney, prostate and pancreas and is not found in the brain, testis, ovary, and peripheral blood leukocytes.,

---

**Subcellular Location :**

Cytoplasm . Cytoplasm, cytoskeleton . Cytoplasm, myofibril, sarcomere, Z line . Associates with actin stress fibers. .

---

**Expression :**

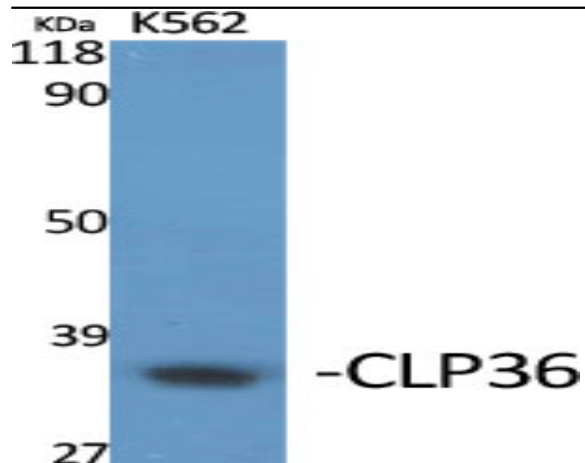
Strongly expressed in the heart and skeletal muscle, moderately expressed in the spleen, small intestine, colon, placenta, and lung. A lower level expression is seen in liver, thymus, kidney, prostate and pancreas and is not found in the brain, testis, ovary, and peripheral blood leukocytes.

---

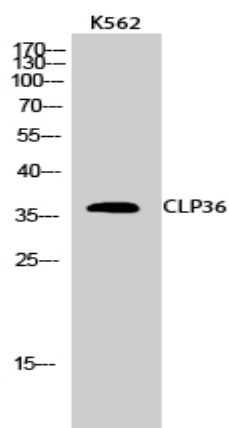
**Tag :** hot**Sort :** 4297**No4 :** 1**Host :** Rabbit**Modifications :** Unmodified

---

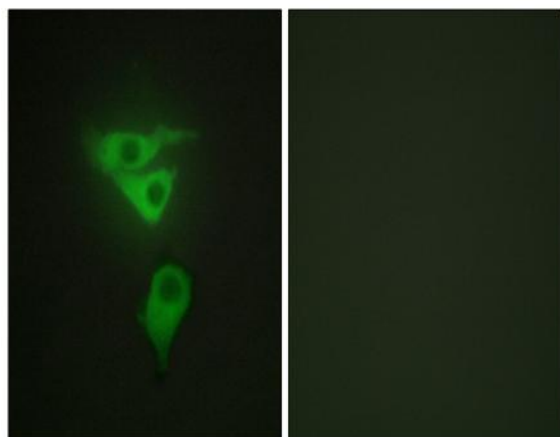
**Products Images**



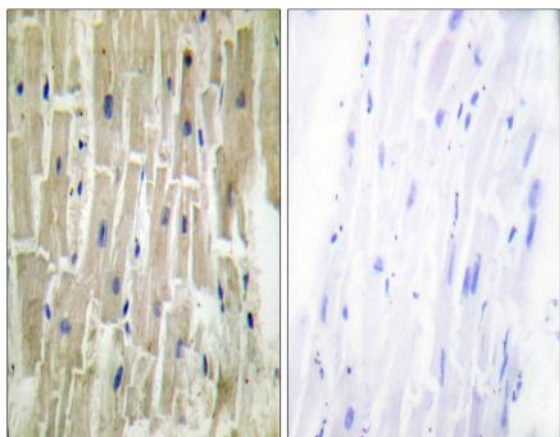
Western Blot analysis of various cells using CLP36 Polyclonal Antibody diluted at 1:1000



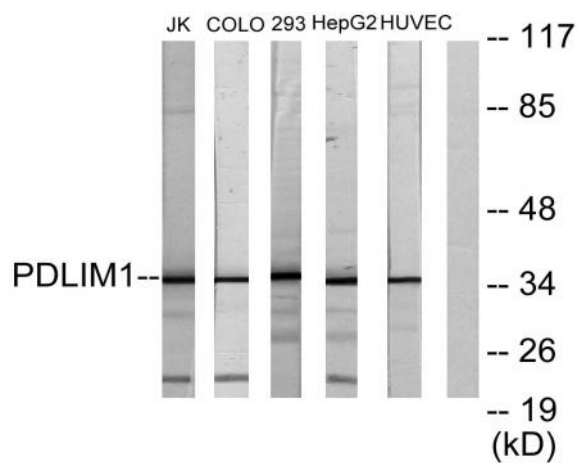
Western Blot analysis of K562 cells using CLP36 Polyclonal Antibody diluted at 1:1000



Immunofluorescence analysis of HepG2 cells, using PDLIM1 Antibody. The picture on the right is blocked with the synthesized peptide.



Immunohistochemistry analysis of paraffin-embedded human heart tissue, using PDLIM1 Antibody. The picture on the right is blocked with the synthesized peptide.



Western blot analysis of lysates from Jurkat, COLO205, 293, HepG2, and HUVEC cells, using PDLIM1 Antibody. The lane on the right is blocked with the synthesized peptide.