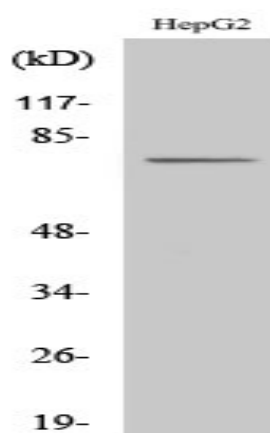


CLIP4 Polyclonal Antibody

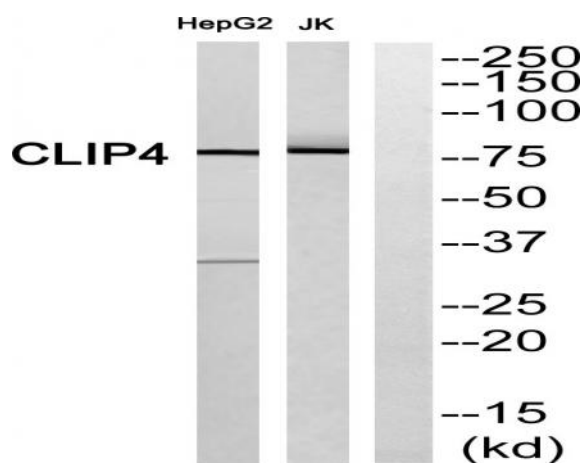
Catalog No :	YT0970
Reactivity :	Human;Rat;Mouse;
Applications :	WB;ELISA
Target :	CLIP4
Gene Name :	CLIP4
Protein Name :	CAP-Gly domain-containing linker protein 4
Human Gene Id :	79745
Human Swiss Prot No :	Q8N3C7
Mouse Swiss Prot No :	Q8CI96
Immunogen :	The antiserum was produced against synthesized peptide derived from human CLIP4. AA range:321-370
Specificity :	CLIP4 Polyclonal Antibody detects endogenous levels of CLIP4 protein.
Formulation :	Liquid in PBS containing 50% glycerol, 0.5% BSA and 0.02% sodium azide.
Source :	Polyclonal, Rabbit,IgG
Dilution :	WB 1:500 - 1:2000. ELISA: 1:40000. Not yet tested in other applications.
Purification :	The antibody was affinity-purified from rabbit antiserum by affinity-chromatography using epitope-specific immunogen.
Concentration :	1 mg/ml
Storage Stability :	-15°C to -25°C/1 year(Do not lower than -25°C)
Observed Band :	76kD

Cell Pathway :	Regulation of Microtubule Dynamics
Background :	similarity:Contains 3 ANK repeats.,similarity:Contains 3 CAP-Gly domains.,
Function :	similarity:Contains 3 ANK repeats.,similarity:Contains 3 CAP-Gly domains.,
Subcellular Location :	integral component of membrane,
Expression :	Amygdala,Brain,Lung,Prostate,Testis,
Sort :	4286
No4 :	1
Host :	Rabbit
Modifications :	Unmodified

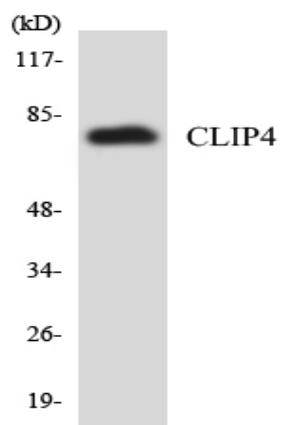
Products Images



Western blot analysis of various cells using CLIP4 Polyclonal Antibody



Western blot analysis of CLIP4 Antibody. The lane on the right is blocked with the CLIP4 peptide.



Western blot analysis of the lysates from HUVEC cells using CLIP4 antibody.