

CYP4Z1/2 Polyclonal Antibody

Catalog No :	YT1240
Reactivity :	Human;Rat;Mouse;
Applications :	WB;IHC;IF;ELISA
Target :	CYP4Z1/2
Gene Name :	CYP4Z1/CYP4Z2P
Protein Name :	Cytochrome P450 4Z1/Putative cytochrome P450 family member 4Z2
Human Gene Id :	199974
Human Swiss Prot No :	Q5VVE4/Q8N1L4
Immunogen :	Synthesized peptide derived from the Internal region of human CYP4Z1/2.
Specificity :	CYP4Z1/2 Polyclonal Antibody detects endogenous levels of CYP4Z1/2 protein.
Formulation :	Liquid in PBS containing 50% glycerol, 0.5% BSA and 0.02% sodium azide.
Source :	Polyclonal, Rabbit,IgG
Dilution :	WB 1:500-2000 IHC 1:100 - 1:300. ELISA: 1:40000. IF 1:50-200
Purification :	The antibody was affinity-purified from rabbit antiserum by affinity-chromatography using epitope-specific immunogen.
Concentration :	1 mg/ml
Storage Stability :	-15°C to -25°C/1 year(Do not lower than -25°C)
Molecularweight :	40-60kD
Background :	catalytic activity:RH + reduced flavoprotein + O(2) = ROH + oxidized flavoprotein + H(2)O.,cofactor:Heme group.,similarity:Belongs to the cytochrome P450 family.,tissue specificity:Preferentially detected in breast carcinoma tissue

and mammary gland, whereas only marginal expression is found in all other tested tissues.,

Function :

catalytic activity:RH + reduced flavoprotein + O(2) = ROH + oxidized flavoprotein + H(2)O.,cofactor:Heme group.,similarity:Belongs to the cytochrome P450 family.,tissue specificity:Preferentially detected in breast carcinoma tissue and mammary gland, whereas only marginal expression is found in all other tested tissues.,

Sort :

4821

No4 :

1

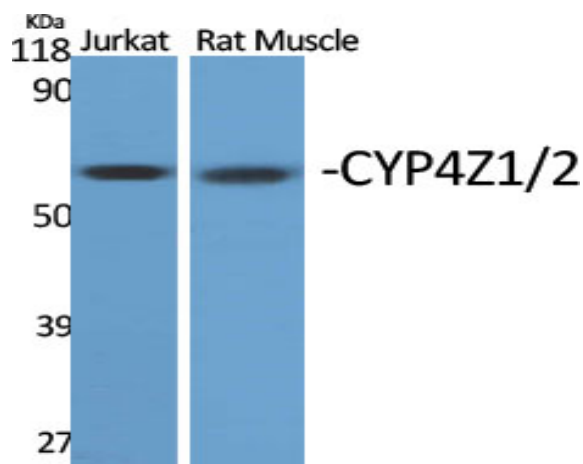
Host :

Rabbit

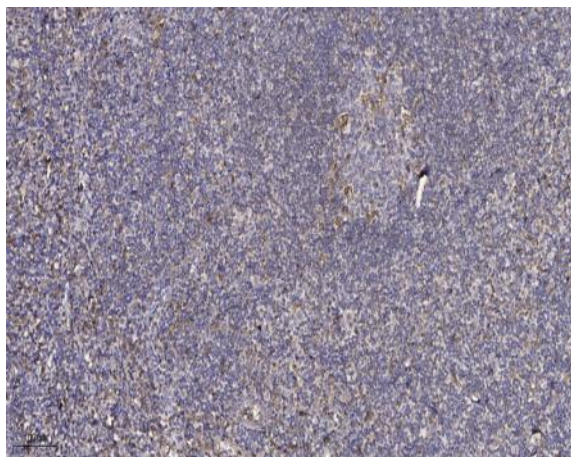
Modifications :

Unmodified

Products Images



Western Blot analysis of various cells using CYP4Z1/2 Polyclonal Antibody



Immunohistochemical analysis of paraffin-embedded human tonsil. 1, Antibody was diluted at 1:200(4° overnight). 2, Tris-EDTA,pH9.0 was used for antigen retrieval. 3,Secondary antibody was diluted at 1:200(room temperature, 30min).