

CYP4Z1 Polyclonal Antibody

Catalog No :	YT1239
Reactivity :	Human;Rat;Mouse;
Applications :	WB;IHC;IF;ELISA
Target :	CYP4Z1
Gene Name :	CYP4Z1
Protein Name :	Cytochrome P450 4Z1
Human Gene Id :	199974
Human Swiss Prot No :	Q86W10
Immunogen :	The antiserum was produced against synthesized peptide derived from human Cytochrome P450 4Z1. AA range:71-120
Specificity :	CYP4Z1 Polyclonal Antibody detects endogenous levels of CYP4Z1 protein.
Formulation :	Liquid in PBS containing 50% glycerol, 0.5% BSA and 0.02% sodium azide.
Source :	Polyclonal, Rabbit,IgG
Dilution :	WB 1:500-2000 IHC 1:100 - 1:300. IF 1:200 - 1:1000. ELISA: 1:20000. Not yet tested in other applications.
Purification :	The antibody was affinity-purified from rabbit antiserum by affinity-chromatography using epitope-specific immunogen.
Concentration :	1 mg/ml
Storage Stability :	-15°C to -25°C/1 year(Do not lower than -25°C)
Molecularweight :	59kD
Background :	CYP4Z1 encodes a member of the cytochrome P450 superfamily of enzymes.

The cytochrome P450 proteins are monooxygenases which catalyze many reactions involved in drug metabolism and synthesis of cholesterol, steroids and other lipids. CYP4Z1 is part of a cluster of cytochrome P450 genes on chromosome 1p33.

Function : oxidation reduction,

Subcellular Location : Endoplasmic reticulum membrane ; Single-pass type II membrane protein .
Microsome membrane ; Single-pass type II membrane protein .

Expression : Preferentially detected in breast carcinoma tissue and mammary gland, whereas only marginal expression is found in all other tested tissues.

Tag : hot

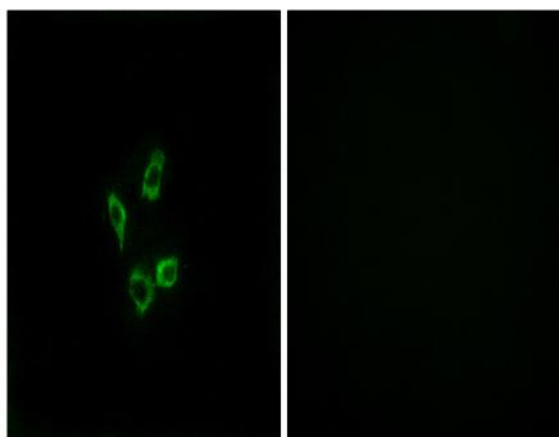
Sort : 4820

No4 : 1

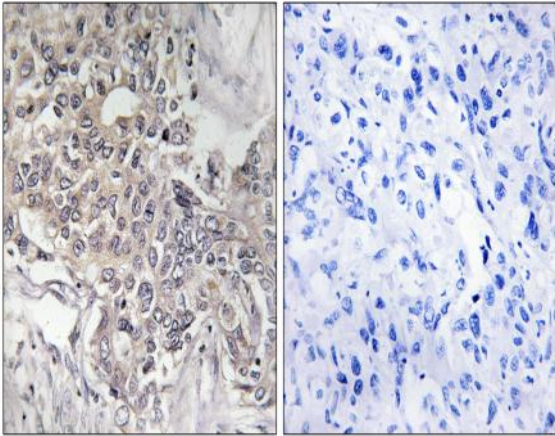
Host : Rabbit

Modifications : Unmodified

Products Images



Immunofluorescence analysis of HUVEC cells, using Cytochrome P450 4Z1 Antibody. The picture on the right is blocked with the synthesized peptide.



Immunohistochemistry analysis of paraffin-embedded human liver carcinoma tissue, using Cytochrome P450 4Z1 Antibody. The picture on the right is blocked with the synthesized peptide.