

**CYP4F11 Polyclonal Antibody**

<b>Catalog No :</b>	YT1234
<b>Reactivity :</b>	Human;Rat;Mouse;
<b>Applications :</b>	WB;ELISA
<b>Target :</b>	CYP4F11
<b>Gene Name :</b>	CYP4F11
<b>Protein Name :</b>	Cytochrome P450 4F11
<b>Human Gene Id :</b>	57834
<b>Human Swiss Prot No :</b>	Q9HBI6
<b>Immunogen :</b>	The antiserum was produced against synthesized peptide derived from human Cytochrome P450 4F11. AA range:341-390
<b>Specificity :</b>	CYP4F11 Polyclonal Antibody detects endogenous levels of CYP4F11 protein.
<b>Formulation :</b>	Liquid in PBS containing 50% glycerol, 0.5% BSA and 0.02% sodium azide.
<b>Source :</b>	Polyclonal, Rabbit,IgG
<b>Dilution :</b>	WB 1:500 - 1:2000. ELISA: 1:5000. Not yet tested in other applications.
<b>Purification :</b>	The antibody was affinity-purified from rabbit antiserum by affinity-chromatography using epitope-specific immunogen.
<b>Concentration :</b>	1 mg/ml
<b>Storage Stability :</b>	-15°C to -25°C/1 year(Do not lower than -25°C)
<b>Observed Band :</b>	60kD
<b>Background :</b>	cytochrome P450 family 4 subfamily F member 11(CYP4F11) Homo sapiens This gene, CYP4F11, encodes a member of the cytochrome P450 superfamily of

enzymes. The cytochrome P450 proteins are monooxygenases which catalyze many reactions involved in drug metabolism and synthesis of cholesterol, steroids and other lipids. This gene is part of a cluster of cytochrome P450 genes on chromosome 19. Another member of this family, CYP4F2, is approximately 16 kb away. Alternatively spliced transcript variants encoding the same protein have been found for this gene. [provided by RefSeq, Jul 2008],

**Function :** catalytic activity:RH + reduced flavoprotein + O(2) = ROH + oxidized flavoprotein + H(2)O.,cofactor:Heme group.,similarity:Belongs to the cytochrome P450 family.,tissue specificity:Expressed mainly in human liver, followed by kidney, heart, and skeletal muscle.,

**Subcellular Location :** Endoplasmic reticulum membrane ; Single-pass membrane protein . Microsome membrane ; Single-pass membrane protein .

**Expression :** Expressed mainly in human liver, followed by kidney, heart, and skeletal muscle.

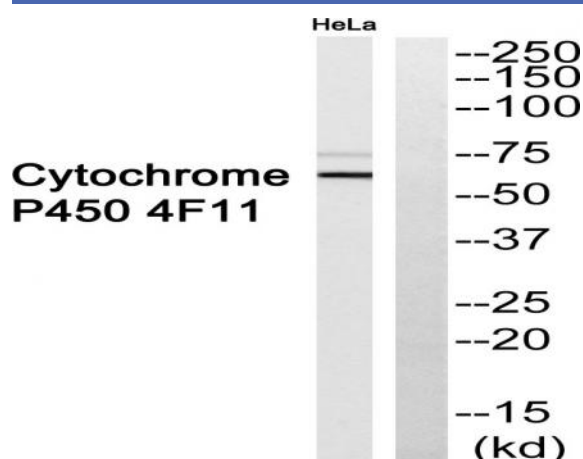
**Sort :** 4815

**No4 :** 1

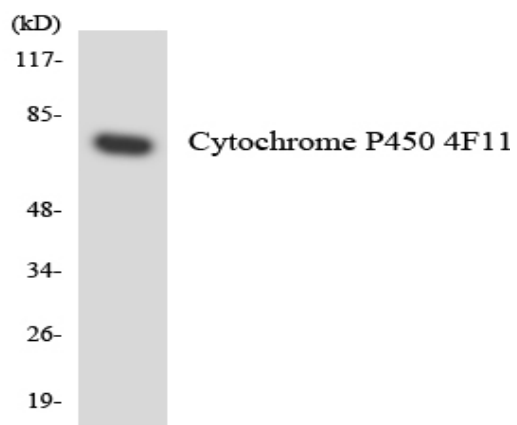
**Host :** Rabbit

**Modifications :** Unmodified

## Products Images



Western blot analysis of Cytochrome P450 4F11 Antibody. The lane on the right is blocked with the Cytochrome P450 4F11 peptide.



Western blot analysis of the lysates from COLO205 cells using Cytochrome P450 4F11 antibody.