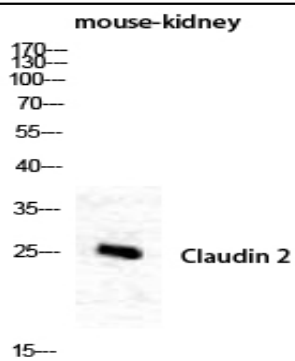


Claudin-2 Polyclonal Antibody

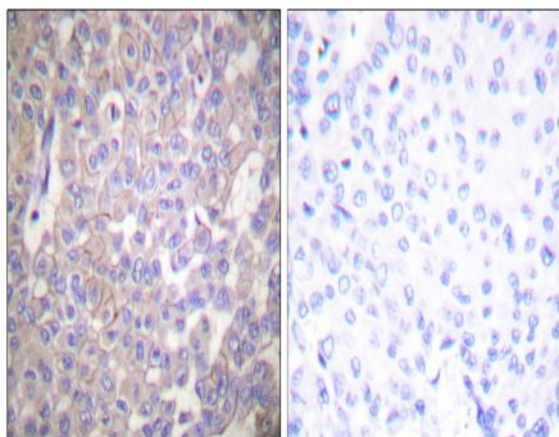
Catalog No :	YT0947
Reactivity :	Human;Mouse
Applications :	WB;IHC;IF;ELISA
Target :	Claudin-2
Fields :	>>Cell adhesion molecules;>>Tight junction;>>Leukocyte transendothelial migration;>>Pathogenic Escherichia coli infection;>>Hepatitis C
Gene Name :	CLDN2
Protein Name :	Claudin-2
Human Gene Id :	9075
Human Swiss Prot No :	P57739
Mouse Gene Id :	12738
Mouse Swiss Prot No :	O88552
Immunogen :	The antiserum was produced against synthesized peptide derived from human Claudin 2. AA range:181-230
Specificity :	Claudin-2 Polyclonal Antibody detects endogenous levels of Claudin-2 protein.
Formulation :	Liquid in PBS containing 50% glycerol, 0.5% BSA and 0.02% sodium azide.
Source :	Polyclonal, Rabbit,IgG
Dilution :	WB 1:500 - 1:2000. IHC 1:100 - 1:300. ELISA: 1:5000.. IF 1:50-200
Purification :	The antibody was affinity-purified from rabbit antiserum by affinity-chromatography using epitope-specific immunogen.
Concentration :	1 mg/ml

Storage Stability :	-15°C to -25°C/1 year(Do not lower than -25°C)
Observed Band :	25kD
Cell Pathway :	Cell adhesion molecules (CAMs);Tight junction;Leukocyte transendothelial migration;
Background :	This gene product belongs to the claudin protein family whose members have been identified as major integral membrane proteins localized exclusively at tight junctions. Claudins are expressed in an organ-specific manner and regulate tissue-specific physiologic properties of tight junctions. This protein is expressed in the intestine. Alternatively spliced transcript variants with different 5' untranslated region have been found for this gene.[provided by RefSeq, Jan 2010],
Function :	function:Plays a major role in tight junction-specific obliteration of the intercellular space, through calcium-independent cell-adhesion activity.,similarity:Belongs to the claudin family.,subunit:Can form homo- and heteropolymers with other CLDN. Homopolymers interact with CLDN3, but not CLDN1, homopolymers. Directly interacts with TJP1/ZO-1, TJP2/ZO-2 and TJP3/ZO-3.,
Subcellular Location :	Cell junction, tight junction . Cell membrane ; Multi-pass membrane protein .
Expression :	Colon,Colon epithelium,Kidney,Skin,Teratocarcinoma,Thalamus,
Sort :	4108
No4 :	1
Host :	Rabbit
Modifications :	Unmodified

Products Images



Western Blot analysis of mouse-kidney cells using Claudin-2 Polyclonal Antibody diluted at 1:1000



Immunohistochemistry analysis of paraffin-embedded human breast carcinoma tissue, using Claudin 2 Antibody. The picture on the right is blocked with the synthesized peptide.