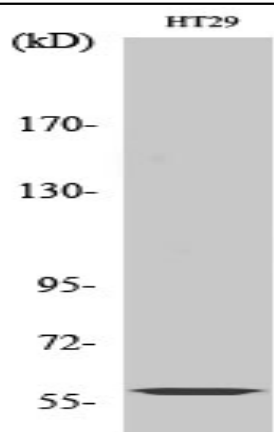


CYP2J2 Polyclonal Antibody

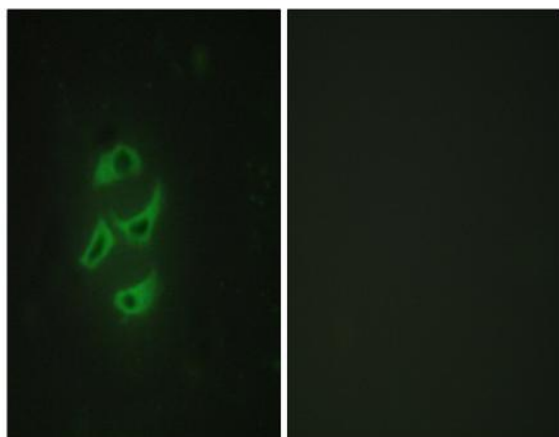
Catalog No :	YT1221
Reactivity :	Human;Monkey
Applications :	WB;IHC;IF;ELISA
Target :	CYP2J2
Fields :	>>Arachidonic acid metabolism;>>Linoleic acid metabolism;>>Metabolic pathways;>>Serotonergic synapse;>>Inflammatory mediator regulation of TRP channels;>>Ovarian steroidogenesis;>>Lipid and atherosclerosis
Gene Name :	CYP2J2
Protein Name :	Cytochrome P450 2J2
Human Gene Id :	1573
Human Swiss Prot No :	P51589
Immunogen :	The antiserum was produced against synthesized peptide derived from human Cytochrome P450 2J2. AA range:231-280
Specificity :	CYP2J2 Polyclonal Antibody detects endogenous levels of CYP2J2 protein.
Formulation :	Liquid in PBS containing 50% glycerol, 0.5% BSA and 0.02% sodium azide.
Source :	Polyclonal, Rabbit,IgG
Dilution :	WB 1:500 - 1:2000. IHC 1:100 - 1:300. IF 1:200 - 1:1000. ELISA: 1:10000. Not yet tested in other applications.
Purification :	The antibody was affinity-purified from rabbit antiserum by affinity-chromatography using epitope-specific immunogen.
Concentration :	1 mg/ml
Storage Stability :	-15°C to -25°C/1 year(Do not lower than -25°C)

Observed Band :	58kD
Cell Pathway :	Arachidonic acid metabolism;Linoleic acid metabolism;
Background :	This gene encodes a member of the cytochrome P450 superfamily of enzymes. The cytochrome P450 proteins are monooxygenases which catalyze many reactions involved in drug metabolism and synthesis of cholesterol, steroids and other lipids. This protein localizes to the endoplasmic reticulum and is thought to be the predominant enzyme responsible for epoxidation of endogenous arachidonic acid in cardiac tissue. Multiple transcript variants have been found for this gene. [provided by RefSeq, Jan 2016],
Function :	catalytic activity:RH + reduced flavoprotein + O(2) = ROH + oxidized flavoprotein + H(2)O.,cofactor:Heme group.,function:This enzyme metabolizes arachidonic acid predominantly via a NADPH-dependent olefin epoxidation to all four regioisomeric cis-epoxyeicosatrienoic acids. One of the predominant enzymes responsible for the epoxidation of endogenous cardiac arachidonic acid pools.,online information:CYP2J2 alleles,similarity:Belongs to the cytochrome P450 family.,tissue specificity:Highly expressed in heart, present at lower levels in liver, ileum, jejunum, colon, and kidney.,
Subcellular Location :	Endoplasmic reticulum membrane; Peripheral membrane protein. Microsome membrane ; Peripheral membrane protein.
Expression :	Highly expressed in heart, present at lower levels in liver, kidney and skeletal muscle (at protein level).
Sort :	4802
No4 :	1
Host :	Rabbit
Modifications :	Unmodified

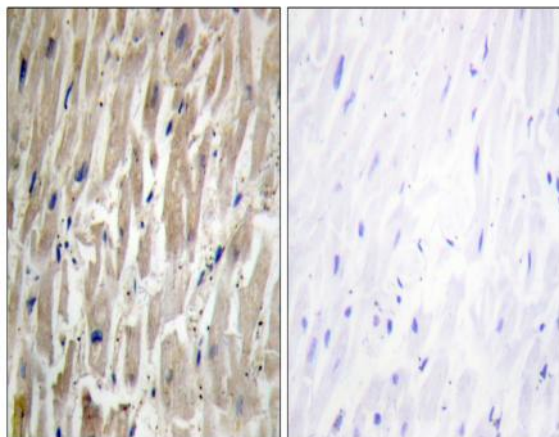
Products Images



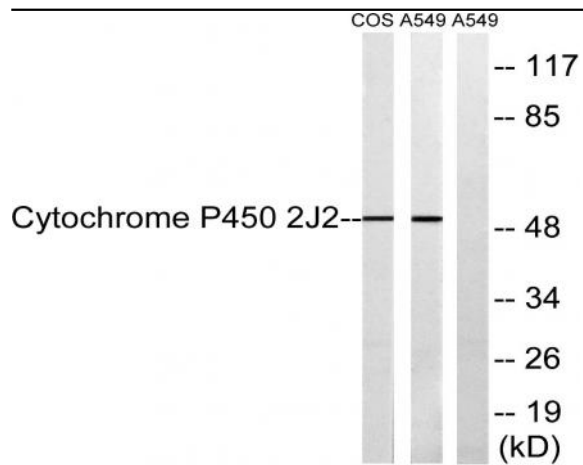
Western Blot analysis of various cells using CYP2J2 Polyclonal Antibody



Immunofluorescence analysis of HepG2 cells, using Cytochrome P450 2J2 Antibody. The picture on the right is blocked with the synthesized peptide.



Immunohistochemistry analysis of paraffin-embedded human heart tissue, using Cytochrome P450 2J2 Antibody. The picture on the right is blocked with the synthesized peptide.



Western blot analysis of lysates from A549 and COS7 cells, using Cytochrome P450 2J2 Antibody. The lane on the right is blocked with the synthesized peptide.