

CYP2B6 Polyclonal Antibody

Catalog No :	YT1209
Reactivity :	Human;Rat;Mouse;
Applications :	WB;IHC;IF;ELISA
Target :	CYP2B6
Fields :	>>Arachidonic acid metabolism;>>Retinol metabolism;>>Metabolism of xenobiotics by cytochrome P450;>>Drug metabolism - cytochrome P450;>>Metabolic pathways;>>Chemical carcinogenesis - receptor activation;>>Lipid and atherosclerosis
Gene Name :	CYP2B6
Protein Name :	Cytochrome P450 2B6
Human Gene Id :	1555
Human Swiss Prot No :	P20813
Immunogen :	The antiserum was produced against synthesized peptide derived from human Cytochrome P450 2B6. AA range:241-290
Specificity :	CYP2B6 Polyclonal Antibody detects endogenous levels of CYP2B6 protein.
Formulation :	Liquid in PBS containing 50% glycerol, 0.5% BSA and 0.02% sodium azide.
Source :	Polyclonal, Rabbit,IgG
Dilution :	WB 1:500 - 1:2000. IHC 1:100 - 1:300. IF 1:200 - 1:1000. ELISA: 1:5000. Not yet tested in other applications.
Purification :	The antibody was affinity-purified from rabbit antiserum by affinity-chromatography using epitope-specific immunogen.
Concentration :	1 mg/ml

Storage Stability : -15°C to -25°C/1 year(Do not lower than -25°C)

Observed Band : 56kD

Cell Pathway : Arachidonic acid metabolism;Retinol metabolism;Metabolism of xenobiotics by cytochrome P450;Drug metabolism;

Background : This gene, CYP2B6, encodes a member of the cytochrome P450 superfamily of enzymes. The cytochrome P450 proteins are monooxygenases which catalyze many reactions involved in drug metabolism and synthesis of cholesterol, steroids and other lipids. This protein localizes to the endoplasmic reticulum and its expression is induced by phenobarbital. The enzyme is known to metabolize some xenobiotics, such as the anti-cancer drugs cyclophosphamide and ifosphamide. Transcript variants for this gene have been described; however, it has not been resolved whether these transcripts are in fact produced by this gene or by a closely related pseudogene, CYP2B7. Both the gene and the pseudogene are located in the middle of a CYP2A pseudogene found in a large cluster of cytochrome P450 genes from the CYP2A, CYP2B and CYP2F subfamilies on chromosome 19q. [provided by RefSeq, Jul 2008],

Function : catalytic activity:RH + reduced flavoprotein + O(2) = ROH + oxidized flavoprotein + H(2)O.,cofactor:Heme group.,function:Cytochromes P450 are a group of heme-thiolate monooxygenases. In liver microsomes, this enzyme is involved in an NADPH-dependent electron transport pathway. It oxidizes a variety of structurally unrelated compounds, including steroids, fatty acids, and xenobiotics.,induction:By phenobarbital.,online information:CYP2B6 alleles,PTM:Phosphorylation is accompanied by a decrease in enzyme activity.,similarity:Belongs to the cytochrome P450 family.,tissue specificity:Expressed in liver, lung and heart right ventricle.,

Subcellular Location : Endoplasmic reticulum membrane; Peripheral membrane protein. Microsome membrane; Peripheral membrane protein.

Expression : Expressed in liver, lung and heart right ventricle.

Tag : hot

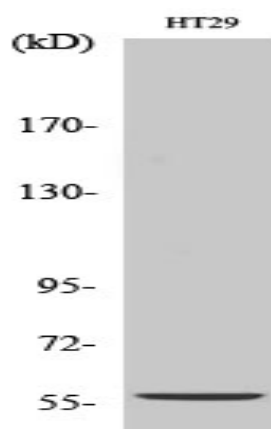
Sort : 4790

No4 : 1

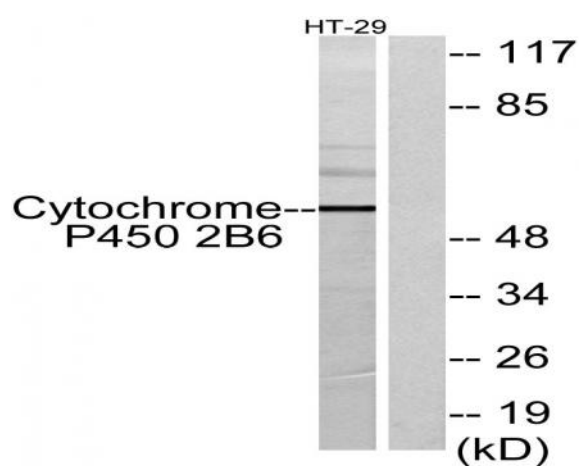
Host : Rabbit

Modifications : Unmodified

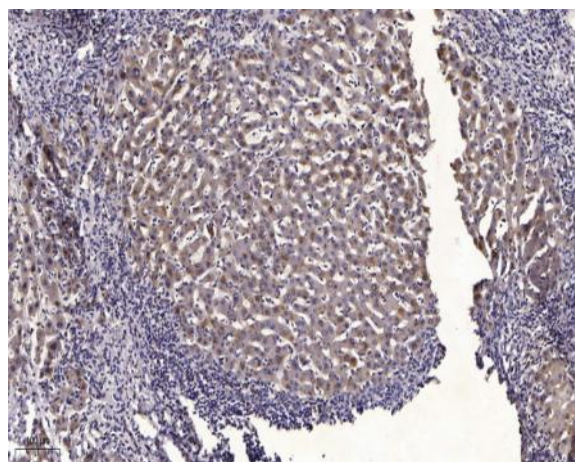
Products Images



Western Blot analysis of various cells using CYP2B6 Polyclonal Antibody



Western blot analysis of lysates from HT-29 cells, using Cytochrome P450 2B6 Antibody. The lane on the right is blocked with the synthesized peptide.



Immunohistochemical analysis of paraffin-embedded human liver cancer. 1, Antibody was diluted at 1:200(4° overnight). 2, Tris-EDTA,pH9.0 was used for antigen retrieval. 3,Secondary antibody was diluted at 1:200(room temperature, 45min).