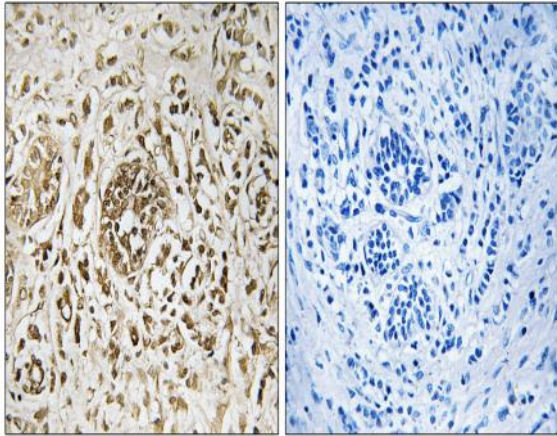


CIB2 Polyclonal Antibody

Catalog No :	YT0925
Reactivity :	Human;Mouse;Rat
Applications :	IHC;IF;ELISA
Target :	CIB2
Gene Name :	CIB2
Protein Name :	Calcium and integrin-binding family member 2
Human Gene Id :	10518
Human Swiss Prot No :	O75838
Mouse Gene Id :	56506
Mouse Swiss Prot No :	Q9Z309
Rat Gene Id :	300719
Rat Swiss Prot No :	Q568Z7
Immunogen :	The antiserum was produced against synthesized peptide derived from human CIB2. AA range:21-70
Specificity :	CIB2 Polyclonal Antibody detects endogenous levels of CIB2 protein.
Formulation :	Liquid in PBS containing 50% glycerol, 0.5% BSA and 0.02% sodium azide.
Source :	Polyclonal, Rabbit,IgG
Dilution :	IHC 1:100 - 1:300. ELISA: 1:5000.. IF 1:50-200
Purification :	The antibody was affinity-purified from rabbit antiserum by affinity-chromatography using epitope-specific immunogen.

Concentration :	1 mg/ml
Storage Stability :	-15°C to -25°C/1 year(Do not lower than -25°C)
Molecularweight :	22kD
Background :	The protein encoded by this gene is similar to that of KIP/CIB, calcineurin B, and calmodulin. The encoded protein is a calcium-binding regulatory protein that interacts with DNA-dependent protein kinase catalytic subunits (DNA-PKcs), and it is involved in photoreceptor cell maintenance. Mutations in this gene cause deafness, autosomal recessive, 48 (DFNB48), and also Usher syndrome 1J (USH1J). Alternative splicing results in multiple transcript variants. [provided by RefSeq, Jul 2014],
Function :	similarity:Contains 3 EF-hand domains.,tissue specificity:Ubiquitous.,
Subcellular Location :	Cytoplasm . Cell projection, stereocilium . Photoreceptor inner segment . Cell projection, cilium, photoreceptor outer segment . Cell membrane, sarcolemma . Colocalized with ITGA7 at the myotendinous junctions (MTJ) and at the neuromuscular junctions (NMJ) (By similarity). Localizes in the cuticular plate along and at the tip of the stereocilia of vestibular sensory hair cells (PubMed:26173970, PubMed:26426422). .
Expression :	Widely expressed (PubMed:23023331).
Sort :	3994
No4 :	1
Host :	Rabbit
Modifications :	Unmodified

Products Images



Immunohistochemistry analysis of paraffin-embedded human breast carcinoma tissue, using CIB2 Antibody. The picture on the right is blocked with the synthesized peptide.