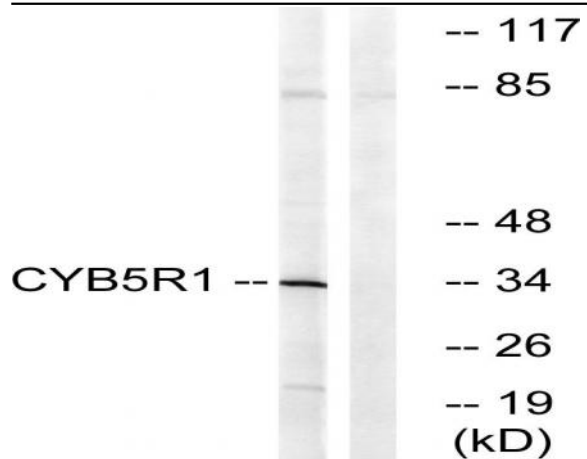


CYB5R1 Polyclonal Antibody

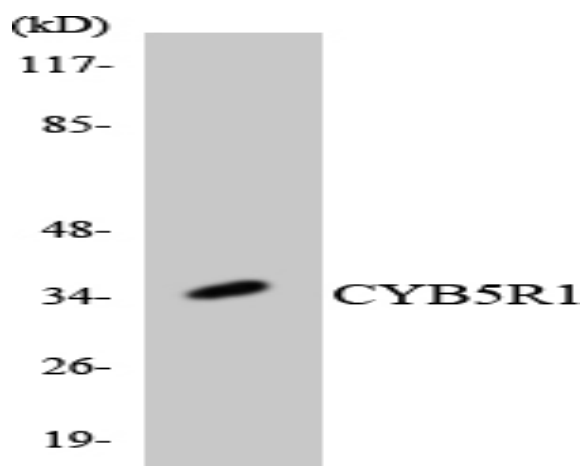
Catalog No :	YT1165
Reactivity :	Human;Mouse;Rat
Applications :	WB;ELISA
Target :	CYB5R1
Fields :	>>Amino sugar and nucleotide sugar metabolism
Gene Name :	CYB5R1
Protein Name :	NADH-cytochrome b5 reductase 1
Human Gene Id :	51706
Human Swiss Prot No :	Q9UHQ9
Mouse Gene Id :	72017
Mouse Swiss Prot No :	Q9DB73
Rat Gene Id :	304805
Rat Swiss Prot No :	Q5EB81
Immunogen :	The antiserum was produced against synthesized peptide derived from human CYB5R1. AA range:9-58
Specificity :	CYB5R1 Polyclonal Antibody detects endogenous levels of CYB5R1 protein.
Formulation :	Liquid in PBS containing 50% glycerol, 0.5% BSA and 0.02% sodium azide.
Source :	Polyclonal, Rabbit,IgG
Dilution :	WB 1:500 - 1:2000. ELISA: 1:20000. Not yet tested in other applications.

Purification :	The antibody was affinity-purified from rabbit antiserum by affinity-chromatography using epitope-specific immunogen.
Concentration :	1 mg/ml
Storage Stability :	-15°C to -25°C/1 year(Do not lower than -25°C)
Observed Band :	34kD
Cell Pathway :	Amino sugar and nucleotide sugar metabolism;
Background :	<p>catalytic activity:NADH + 2 ferricytochrome b5 = NAD(+) + H(+) + 2 ferrocycytochrome b5.,cofactor:FAD.,function:NADH-cytochrome b5 reductases are involved in desaturation and elongation of fatty acids, cholesterol biosynthesis, drug metabolism, and, in erythrocyte, methemoglobin reduction.,similarity:Belongs to the flavoprotein pyridine nucleotide cytochrome reductase family.,similarity:Contains 1 FAD-binding FR-type domain.,tissue specificity:Widely expressed.,</p>
Function :	<p>catalytic activity:NADH + 2 ferricytochrome b5 = NAD(+) + H(+) + 2 ferrocycytochrome b5.,cofactor:FAD.,function:NADH-cytochrome b5 reductases are involved in desaturation and elongation of fatty acids, cholesterol biosynthesis, drug metabolism, and, in erythrocyte, methemoglobin reduction.,similarity:Belongs to the flavoprotein pyridine nucleotide cytochrome reductase family.,similarity:Contains 1 FAD-binding FR-type domain.,tissue specificity:Widely expressed.,</p>
Subcellular Location :	Membrane ; Single-pass membrane protein .
Expression :	Widely expressed.
Sort :	4699
No4 :	1
Host :	Rabbit
Modifications :	Unmodified

Products Images



Western blot analysis of lysates from RAW264.7 cells, using CYB5R1 Antibody. The lane on the right is blocked with the synthesized peptide.



Western blot analysis of the lysates from K562 cells using CYB5R1 antibody.