

CYB561D2 Polyclonal Antibody

Catalog No :	YT1164
Reactivity :	Human;Rat;Mouse;
Applications :	WB;ELISA
Target :	CYB561D2
Gene Name :	CYB561D2
Protein Name :	Cytochrome b561 domain-containing protein 2
Human Gene Id :	11068
Human Swiss Prot No :	O14569
Mouse Swiss Prot No :	Q9WUE3
Immunogen :	The antiserum was produced against synthesized peptide derived from human C56D2. AA range:55-104
Specificity :	CYB561D2 Polyclonal Antibody detects endogenous levels of CYB561D2 protein.
Formulation :	Liquid in PBS containing 50% glycerol, 0.5% BSA and 0.02% sodium azide.
Source :	Polyclonal, Rabbit,IgG
Dilution :	WB 1:500 - 1:2000. ELISA: 1:20000. Not yet tested in other applications.
Purification :	The antibody was affinity-purified from rabbit antiserum by affinity-chromatography using epitope-specific immunogen.
Concentration :	1 mg/ml
Storage Stability :	-15°C to -25°C/1 year(Do not lower than -25°C)
Observed Band :	24kD

Background : cofactor: Binds 2 heme groups non-covalently., similarity: Contains 1 cytochrome b561 domain.,

Function : cofactor: Binds 2 heme groups non-covalently., similarity: Contains 1 cytochrome b561 domain.,

Subcellular Location : Endoplasmic reticulum membrane ; Multi-pass membrane protein . Cytoplasmic vesicle membrane ; Multi-pass membrane protein .

Expression : Pancreas,

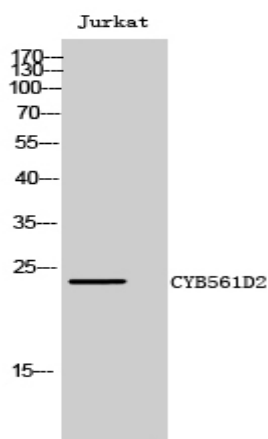
Sort : 4698

No4 : 1

Host : Rabbit

Modifications : Unmodified

Products Images



Western Blot analysis of Jurkat cells using CYB561D2 Polyclonal Antibody

