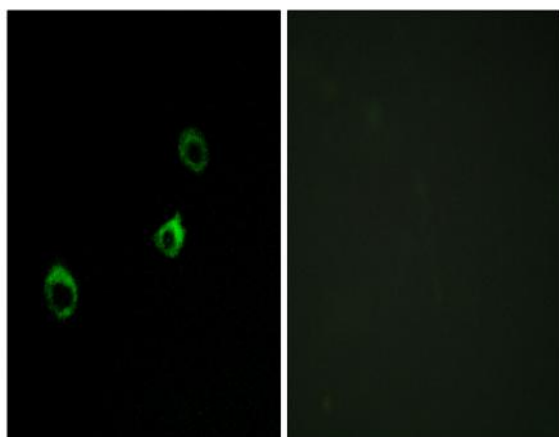


CYB561D1 Polyclonal Antibody

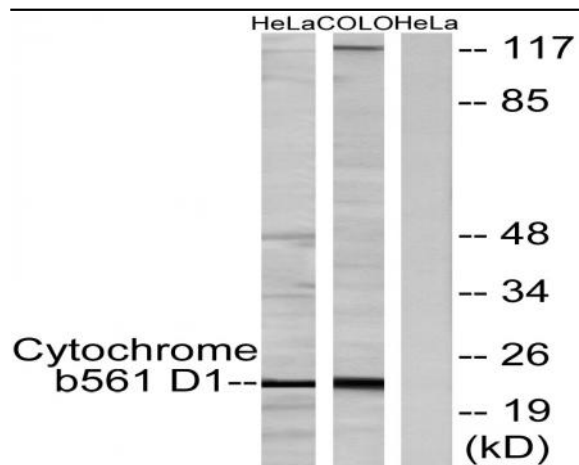
Catalog No :	YT1163
Reactivity :	Human;Rat;Mouse;
Applications :	WB;IF;ELISA
Target :	CYB561D1
Gene Name :	CYB561D1
Protein Name :	Cytochrome b561 domain-containing protein 1
Human Gene Id :	284613
Human Swiss Prot No :	Q8N8Q1
Mouse Swiss Prot No :	A2AE42
Immunogen :	The antiserum was produced against synthesized peptide derived from human CYB561D1. AA range:180-229
Specificity :	CYB561D1 Polyclonal Antibody detects endogenous levels of CYB561D1 protein.
Formulation :	Liquid in PBS containing 50% glycerol, 0.5% BSA and 0.02% sodium azide.
Source :	Polyclonal, Rabbit,IgG
Dilution :	WB 1:500 - 1:2000. IF 1:200 - 1:1000. ELISA: 1:40000. Not yet tested in other applications.
Purification :	The antibody was affinity-purified from rabbit antiserum by affinity-chromatography using epitope-specific immunogen.
Concentration :	1 mg/ml
Storage Stability :	-15°C to -25°C/1 year(Do not lower than -25°C)

Observed Band :	23kD
Background :	cofactor: Binds 2 heme groups non-covalently., similarity: Contains 1 cytochrome b561 domain.,
Function :	cofactor: Binds 2 heme groups non-covalently., similarity: Contains 1 cytochrome b561 domain.,
Subcellular Location :	Membrane ; Multi-pass membrane protein .
Expression :	Brain, Cerebellum, Liver, Tongue,
Sort :	4697
No4 :	1
Host :	Rabbit
Modifications :	Unmodified

Products Images



Immunofluorescence analysis of MCF-7 cells, using Cytochrome b561 D1 Antibody. The picture on the right is blocked with the synthesized peptide.



Western blot analysis of lysates from HeLa cells and COLO205 cells, using Cytochrome b561 D1 Antibody. The lane on the right is blocked with the synthesized peptide.