

## Cerebral 1 Polyclonal Antibody

<b>Catalog No :</b>	YT0872
<b>Reactivity :</b>	Human;Rat;Mouse;
<b>Applications :</b>	WB;IHC;IF;ELISA
<b>Target :</b>	Cerebral 1
<b>Gene Name :</b>	RRP8
<b>Protein Name :</b>	Ribosomal RNA-processing protein 8
<b>Human Gene Id :</b>	23378
<b>Human Swiss Prot No :</b>	O43159
<b>Mouse Swiss Prot No :</b>	Q9DB85
<b>Immunogen :</b>	The antiserum was produced against synthesized peptide derived from human HUCE1. AA range:271-320
<b>Specificity :</b>	Cerebral 1 Polyclonal Antibody detects endogenous levels of Cerebral 1 protein.
<b>Formulation :</b>	Liquid in PBS containing 50% glycerol, 0.5% BSA and 0.02% sodium azide.
<b>Source :</b>	Polyclonal, Rabbit,IgG
<b>Dilution :</b>	WB 1:500 - 1:2000. IHC 1:100 - 1:300. ELISA: 1:20000.. IF 1:50-200
<b>Purification :</b>	The antibody was affinity-purified from rabbit antiserum by affinity-chromatography using epitope-specific immunogen.
<b>Concentration :</b>	1 mg/ml
<b>Storage Stability :</b>	-15°C to -25°C/1 year(Do not lower than -25°C)
<b>Observed Band :</b>	51kD

**Background :** RRP8 (Ribosomal RNA Processing 8, Methyltransferase, Homolog (Yeast) is a Protein Coding gene. Diseases associated with RRP8 include bowen-conradi syndrome and lymphatic system cancer. Among its related pathways are Gene Expression and Activated PKN1 stimulates transcription of AR (androgen receptor) regulated genes KLK2 and KLK3. GO annotations related to this gene include poly(A) RNA binding and methylated histone binding. sstantial component of the eNoSC (energy-dependent nucleolar silencing) complex, a complex that mediates silencing of rDNA in response to intracellular energy status and acts by recruiting histone-modifying enzymes. The eNoSC complex is able to sense the energy status of cell: upon glucose starvation, elevation of NAD(+)/NADP(+) ratio activates SIRT1, leading to histone H3 deacetylation followed by dimethylation of H3 at Lys-9 (H3K9me2) by SUV39H1 and the formation of silent chromatin in the rDNA locus. In the complex, RRP8 binds to H3K9me2 and probably acts as a methyltransferase. Its substrates are however unknown.

**Function :** rRNA processing, RNA processing, rRNA metabolic process, ribonucleoprotein complex biogenesis, ncRNA processing,ncRNA metabolic process, ribosome biogenesis,

**Subcellular Location :** Nucleus, nucleolus . Localizes at rDNA locus.

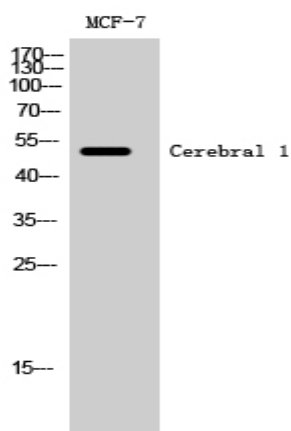
**Sort :** 3868

**No4 :** 1

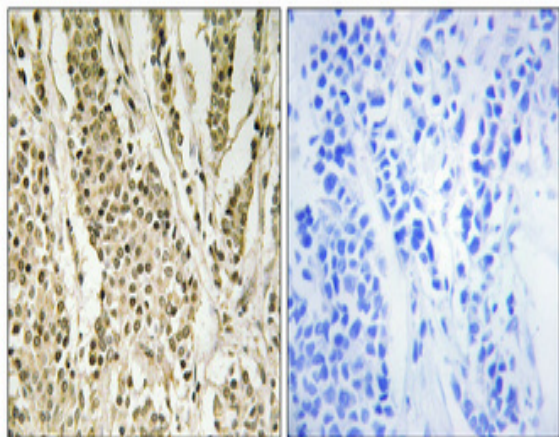
**Host :** Rabbit

**Modifications :** Unmodified

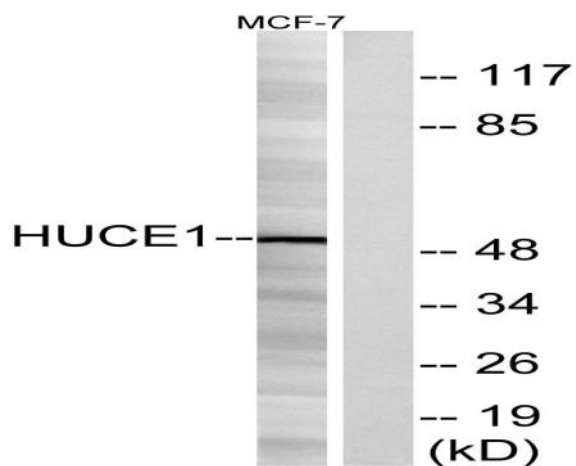
## Products Images



Western Blot analysis of MCF-7 cells using Cerebral 1 Polyclonal Antibody cells nucleus extracted by Minute TM Cytoplasmic and Nuclear Fractionation kit (SC-003, Inventbiotech, MN, USA).



Immunohistochemical analysis of paraffin-embedded Human breast cancer. Antibody was diluted at 1:100(4° overnight). High-pressure and temperature Tris-EDTA,pH8.0 was used for antigen retrieval. Negative contrl (right) obtained from antibody was pre-absorbed by immunogen peptide.



Western blot analysis of lysates from MCF-7 cells, using HUCE1 Antibody. The lane on the right is blocked with the synthesized peptide.