

## Cerebellin 3 Polyclonal Antibody

<b>Catalog No :</b>	YT0870
<b>Reactivity :</b>	Human;Mouse
<b>Applications :</b>	IHC;IF;WB;ELISA
<b>Target :</b>	Cerebellin 3
<b>Gene Name :</b>	CBLN3
<b>Protein Name :</b>	Cerebellin-3
<b>Human Gene Id :</b>	643866
<b>Human Swiss Prot No :</b>	Q6UW01
<b>Mouse Gene Id :</b>	56410
<b>Mouse Swiss Prot No :</b>	Q9JHG0
<b>Immunogen :</b>	The antiserum was produced against synthesized peptide derived from human CBLN3. AA range:131-180
<b>Specificity :</b>	Cerebellin 3 Polyclonal Antibody detects endogenous levels of Cerebellin 3 protein.
<b>Formulation :</b>	Liquid in PBS containing 50% glycerol, 0.5% BSA and 0.02% sodium azide.
<b>Source :</b>	Polyclonal, Rabbit,IgG
<b>Dilution :</b>	WB 1:500-2000 IHC 1:100 - 1:300. ELISA: 1:40000.. IF 1:50-200
<b>Purification :</b>	The antibody was affinity-purified from rabbit antiserum by affinity-chromatography using epitope-specific immunogen.
<b>Concentration :</b>	1 mg/ml
<b>Storage Stability :</b>	-15°C to -25°C/1 year(Do not lower than -25°C)

**Observed Band :** 27kD

---

**Background :** Members of the precerebellin family, such as CBLN3, contain a cerebellin motif (see CBLN1; MIM 600432) and a C-terminal C1q signature domain (see MIM 120550) that mediates trimeric assembly of atypical collagen complexes. However, precerebellins do not contain a collagen motif, suggesting that they are not conventional components of the extracellular matrix (Pang et al., 2000 [PubMed 10964938]).[supplied by OMIM, Aug 2009],

---

**Function :** function:May be involved in synaptic functions in the CNS.,similarity:Contains 1 C1q domain.,subcellular location:Secretion depends probably on a association with CBLN1 or perhaps CBLN4 but not on CBLN2.,subunit:Heterohexamer; disulfide-linked heterotrimers. Does not homooligomerize, but probably forms a complex with at least CBLN1. May interact with CBLN2 and CBLN4.,

---

**Subcellular Location :** Endoplasmic reticulum . Golgi apparatus, cis-Golgi network . Secreted . Cell junction, synapse . In the absence of CBLN1, remains in the endoplasmic reticulum/cis-Golgi apparatus. Partial secretion depends on an association with CBLN1 and maybe CBLN4, but not on CBLN2 (By similarity). .

---

**Sort :** 3866

---

**No4 :** 1

---

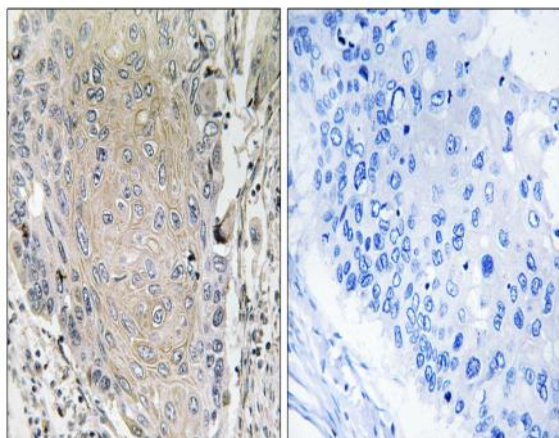
**Host :** Rabbit

---

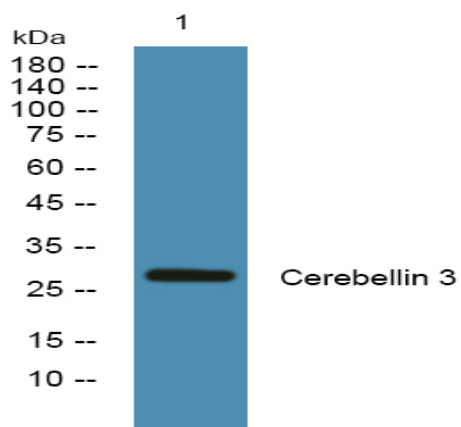
**Modifications :** Unmodified

---

## Products Images



Immunohistochemistry analysis of paraffin-embedded human lung carcinoma tissue, using CBLN3 Antibody. The picture on the right is blocked with the synthesized peptide.



Western blot analysis of lysates from K562 cells, primary antibody was diluted at 1:1000, 4° over night