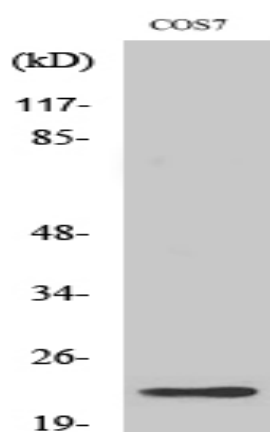


Cerebellin 2 Polyclonal Antibody

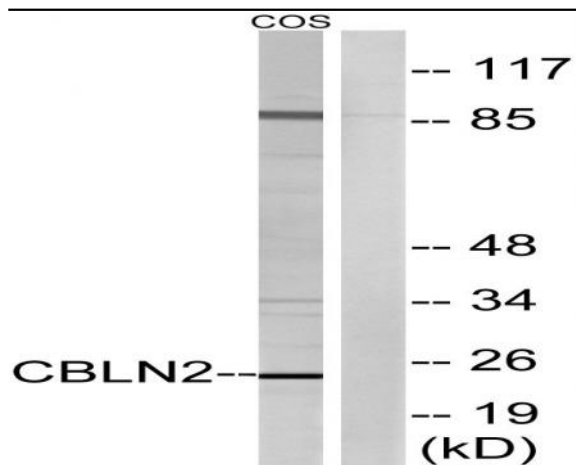
Catalog No :	YT0869
Reactivity :	Human;Mouse;Rat;Monkey
Applications :	WB;ELISA
Target :	Cerebellin 2
Gene Name :	CBLN2
Protein Name :	Cerebellin-2
Human Gene Id :	147381
Human Swiss Prot No :	Q8IUUK8
Mouse Gene Id :	12405
Mouse Swiss Prot No :	Q8BGU2
Rat Gene Id :	291388
Rat Swiss Prot No :	P98087
Immunogen :	The antiserum was produced against synthesized peptide derived from human CBLN2. AA range:161-210
Specificity :	Cerebellin 2 Polyclonal Antibody detects endogenous levels of Cerebellin 2 protein.
Formulation :	Liquid in PBS containing 50% glycerol, 0.5% BSA and 0.02% sodium azide.
Source :	Polyclonal, Rabbit,IgG
Dilution :	WB 1:500 - 1:2000. ELISA: 1:40000. Not yet tested in other applications.
Purification :	The antibody was affinity-purified from rabbit antiserum by affinity-chromatography using epitope-specific immunogen.

Concentration :	1 mg/ml
Storage Stability :	-15°C to -25°C/1 year(Do not lower than -25°C)
Observed Band :	24kD
Background :	similarity:Contains 1 C1q domain.,subunit:May interact with CBLN1, CBLN3 and CBLN4.,
Function :	similarity:Contains 1 C1q domain.,subunit:May interact with CBLN1, CBLN3 and CBLN4.,
Subcellular Location :	Secreted .
Expression :	Brain,
Sort :	3865
No4 :	1
Host :	Rabbit
Modifications :	Unmodified

Products Images



Western Blot analysis of various cells using Cerebellin 2 Polyclonal Antibody



Western blot analysis of lysates from COS cells, using CBLN2 Antibody. The lane on the right is blocked with the synthesized peptide.