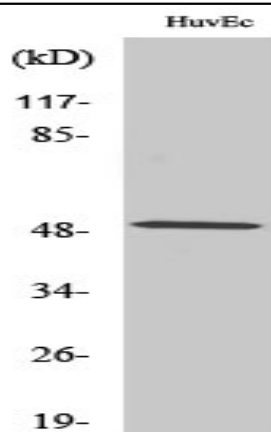


CstF-50 Polyclonal Antibody

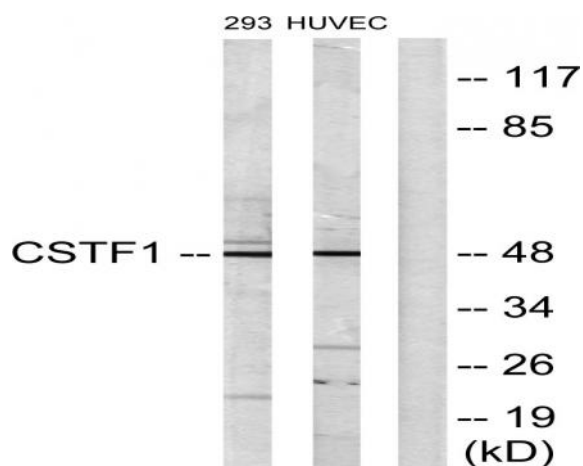
Catalog No :	YT1144
Reactivity :	Human;Mouse;Rat
Applications :	WB;IHC;IF;ELISA
Target :	CstF-50
Fields :	>>mRNA surveillance pathway
Gene Name :	CSTF1
Protein Name :	Cleavage stimulation factor subunit 1
Human Gene Id :	1477
Human Swiss Prot No :	Q05048
Mouse Gene Id :	67337
Mouse Swiss Prot No :	Q99LC2
Rat Gene Id :	311670
Rat Swiss Prot No :	Q5BJQ6
Immunogen :	The antiserum was produced against synthesized peptide derived from human CSTF1. AA range:1-50
Specificity :	CstF-50 Polyclonal Antibody detects endogenous levels of CstF-50 protein.
Formulation :	Liquid in PBS containing 50% glycerol, 0.5% BSA and 0.02% sodium azide.
Source :	Polyclonal, Rabbit,IgG
Dilution :	WB 1:500 - 1:2000. IHC 1:100 - 1:300. ELISA: 1:20000.. IF 1:50-200

Purification :	The antibody was affinity-purified from rabbit antiserum by affinity-chromatography using epitope-specific immunogen.
Concentration :	1 mg/ml
Storage Stability :	-15°C to -25°C/1 year(Do not lower than -25°C)
Observed Band :	48kD
Background :	This gene encodes one of three subunits which combine to form cleavage stimulation factor (CSTF). CSTF is involved in the polyadenylation and 3' end cleavage of pre-mRNAs. Similar to mammalian G protein beta subunits, this protein contains transducin-like repeats. Several transcript variants with different 5' UTR, but encoding the same protein, have been found for this gene. [provided by RefSeq, Jul 2008],
Function :	domain:N-terminus mediates homodimerization.,domain:The WD6 domain is required for interaction with BARD1. WD domains are responsible for interaction with CSTF3.,function:One of the multiple factors required for polyadenylation and 3'-end cleavage of mammalian pre-mRNAs. May be responsible for the interaction of CSTF with other factors to form a stable complex on the pre-mRNA.,PTM:The N-terminus is blocked.,similarity:Contains 6 WD repeats.,subunit:Homodimer. The CSTF complex is composed of CSTF1 (50 kDa subunit), CSTF2 (64 kDa subunit) and CSTF3 (77 kDa subunit). Interacts directly with CSTF3. Interacts with BARD1.,
Subcellular Location :	Nucleus .
Expression :	Muscle,Testis,
Sort :	4637
No4 :	1
Host :	Rabbit
Modifications :	Unmodified

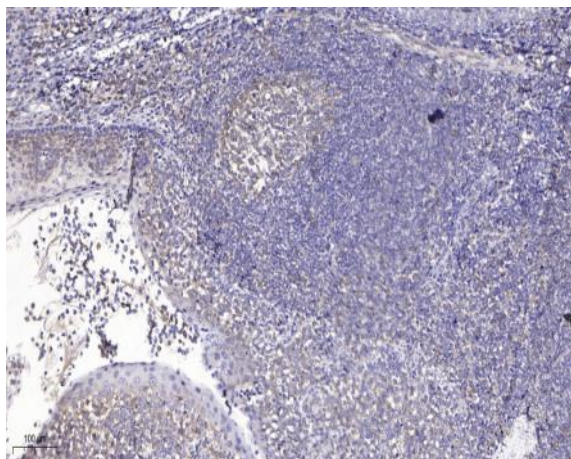
Products Images



Western Blot analysis of various cells using CstF-50 Polyclonal Antibody cells nucleus extracted by Minute TM Cytoplasmic and Nuclear Fractionation kit (SC-003, Inventbiotech, MN, USA).



Western blot analysis of lysates from HUVEC and 293 cells, using CSTF1 Antibody. The lane on the right is blocked with the synthesized peptide.



Immunohistochemical analysis of paraffin-embedded human tonsil. 1, Antibody was diluted at 1:200(4° overnight). 2, Tris-EDTA,pH9.0 was used for antigen retrieval. 3,Secondary antibody was diluted at 1:200(room temperature, 45min).